

## UTEC - Huron Valley Schools - Sharp RFP Pricing

Quantity	Model	Suggested Retail Price	HVS Price	36 Month	48 Month	60 Month
8	MX-M3571	10,875.00	3,207.00	739.79	563.12	458.04
27	MX-M7570	27,650.00	6,583.00	5,125.16	3,901.24	3,173.21
3	MX-3071	12,925.00	4,463.00	386.07	293.88	239.03
1	MX-3571	15,675.00	4,674.00	134.77	102.59	83.44
1	MX-4071	18,425.00	5,530.00	159.46	121.38	98.73
3	MX-6071	22,825.00	6,637.00	574.13	437.03	355.47
8	MX-M905	37,000.00	9,648.00	2,225.60	1,694.11	1,377.97
21	DX-B352P	640.00	426.00	257.96	196.36	159.71
10	MX-B427W	1,917.00	710.00	204.73	155.84	126.76
16	MX-B427PW	917.00	411.00	189.62	144.34	117.40
15	MX-C407P	1,997.00	764.00	330.45	251.54	204.60
10	MX-C507F	8,330.00	2,748.00	792.39	603.16	490.60

Equipment			11,120.13	8,464.57	6,884.96
	Monthly	CPC			
B&W Service	800,000	0.00332	2,656.00	2,656.00	2,656.00
Color Service	50,000	0.035	1,750.00	1,750.00	1,750.00
Total Monthly			<b>15,526.13</b>	<b>12,870.57</b>	<b>11,290.96</b>



# ONE STOP SHOPPING FOR YOUR OFFICE TECHNOLOGY NEEDS

Complete line of MFPs, Professional Displays and Accessories



**Contract #**

*July 2021*

**MAC**

Multi-Function Copiers, Printers and Equipment

**Contract #****Table of Contents**

<b><u>Section</u></b>	<b><u>Page Number</u></b>
Color Multifunction Copiers & Printers	3-31
B&W Multifunction Copiers & Printers	32-62
Desktop Printers	63-80
Managed Print Services	81-84
<b>Professional Displays</b>	85-100
<b>LivMote</b>	86-103
Non-Contact Infrared Thermometer	
<b>Professional Services - System Integration</b>	104
<b>Environmental Conservation</b>	105
<b>Heightened Security</b>	106



**SHARP®**

**Color Multifunction Copiers & Printers**

The MX-C250 desktop color document system is designed to be compact and powerful, bringing performance and productivity to individuals and small workgroups. This model is capable of output speeds of up to 25 pages per minute (PPM), regardless of whether you're working with monochrome or color documents. It offers print, copy, scan and fax features that enhance day-to-day workflows. The compact size of the MX-C250 enables it to fit into tight workspaces without sacrificing the advanced technology that provides professional quality output. Sharpdesk Mobile compatibility offers cutting edge mobile scanning and printing that connects the MX-C250 to mobile products such as iPad®, iPhone®, Android™, Windows® 8, or Windows® RT devices. The compact design of the MX-C250 was achieved using breakthrough technologies developed internally by Sharp, which include a high performance lens, downsized scanning unit, side-by-side toner cartridges and a reduction in overall parts. These technologies have helped Sharp offer one of the lowest costs-per-copy (CPC) in this category.

### Features at a glance

- ◆ Productive Printing and Copying 25 PPM/CPM
- ◆ Paper capacity maximum: 800 sheets (letter and legal)
  - Standard 250 sheet paper drawer and 50 sheet bypass tray
  - Optional: 500 sheet letter/statement drawer
- ◆ PCL®6 / Postscript® 3 network printing for both PC and Mac printing environments
- ◆ 35 Page Single Pass Document Feeder
- ◆ Standard Auto Duplex Printing
- ◆ Sharpdesk Mobile offers powerful, mobile scanning and printing for users' mobile products including iPad, iPhone, Android, Windows 8 and Window RT devices
- ◆ Compact Design: does not require a special cabinet and easily fits into today's small office environments
- ◆ High Quality 600 x 600 dpi copy and print
- ◆ Simplified user interface utilizing a 5-line LCD operation panel
- ◆ Full Color Scanning to E-mail, FTP Server, network folder, USB memory or desktop
- ◆ Front USB port for easy scan to USB memory or printing from USB
- ◆ ID card shot feature for easy copying of insurance cards, credit cards or drivers license
- ◆ IPv6 support ensures the latest compatibility with network environments
- ◆ Dimensions 17" x 20" x 15 3/4" (fully configured)





## MX-C250 Desktop Color Document Systems



### MAC Contract #

Model Number	Description
<b>MX-C250</b>	25 PPM B&W / 25 PPM Color Desktop Printer includes a multitasking controller, 35 sheet single pass feeder, PCL <sup>®</sup> 6/PostScript <sup>®</sup> 3 compatible printing systems, network scanning, auto duplexing, one 250 sheet paper drawer and 50 sheet bypass tray.

### Options & Accessories

#### Tray Options

MX-CS11	500 Sheet Paper Drawer
---------	------------------------

#### Cabinet Options

MX-25ABD	Deluxe Cabinet with door and storage
----------	--------------------------------------

#### Miscellaneous

AR-D5133NT	Digital 120 Volt, 15 Amps, 2 Outlets, Maximum Power Surge Protector
------------	---



The MX-C303W Essentials Series and MX-C304W Advanced Series desktop color document systems deliver crisp, high-quality output with exceptional ease of use. These multifunction printers (MFPs) provide customers with an intuitive user experience and the confidence of knowing their jobs will come out right the first time, every time. Designed with high-performance features typically found on larger machines, the compact MX-C303W and MX-C304W deliver the productivity you need with the performance and reliability you want.

Sharp's award-winning touchscreen display offers a user-friendly graphical interface with simplified Easy Modes, integrated user guides and quick access to network services. Sharp's MFP Voice feature, available on these models, allows you to interact with the machine with the power of natural language. In addition, these models integrate seamlessly with today's complex network environments and support popular cloud services and mobile technologies. Sharp's Application Portal (coming Spring 2019) will allow administrators to add new apps or update existing apps right from the MFP.

The compact MX-C303W and MX-C304W Desktop Color Document Systems offer a strong set of standard workflow features that are often optional on competitive models. These models are also equipped with leading-edge security features that help businesses protect their data and personal information from the first day of operation to the time of trade-in. When you are ready to trade the machine in, a convenient End-of-Lease feature can erase all data and personal information, as well as print a confirmation report.

## Features at a glance

- ◆ Productive Printing and Copying 30 PPM/CPM
- ◆ Paper capacity maximum: 300 sheets (letter and legal)
  - Standard 250 sheet paper drawer and 50 sheet bypass tray
  - Optional: 600 sheet letter/statement/legal drawer
- ◆ Network ready PCL®6 and Adobe® PostScript® 3™ printing systems deliver crisp, clear documents
- ◆ 50 Page Reversing Single Pass Document Feeder (MX-C303W)
- ◆ 100 Page Duplexing Single Pass Document Feeder (MX-C304W)
- ◆ Built-in Optical Character Recognition (OCR) function can convert scanned documents to text-searchable PDF format, Microsoft® Office file formats and more (standard on MX-C304W)
- ◆ Access popular cloud services, such as Microsoft® OneDrive™ for Business, SharePoint® Online, Box.com, Google Drive™, Dropbox and more with Sharp's Cloud Connect feature (standard on MX-C304). And with Sharp's Application Portal (coming Spring 2019), administrators can add or update apps right from the MFP.
- ◆ Sharp's MFP Voice feature enables users to control the device with simple verbal commands. Experience a hands-free, voice-first interaction powered by Amazon Alexa. (optional hardware required)
- ◆ Compact PDF feature dramatically reduces the file size of most color scanned documents, resulting in decreased network traffic and more efficient use of disk and cloud storage (standard on MX-C304W)
- ◆ Award-winning 7" (diagonally measured) customizable touchscreen display with a clean design enables easy access to features and functions when setting up jobs
- ◆ 500 GB hard drive supports convenient Document Filing System with image preview
- ◆ Direct print Microsoft Word, Powerpoint® and Excel® files from thumb drives, cloud applications, network folders and more. This function is enabled via Qualcomm® DirectOffice™ technology (standard on MX-C304W).
- ◆ High Quality 600 x 600 dpi copy and print
- ◆ Dimensions: 19 11/32" (w) x 22 3/8" (d) x 22 21/64" (h) - MX-C303W  
19 11/32" (w) x 22 3/8" (d) x 22 1/4" (h) - MX-C304W



MX-C303W shown with optional accessories

## MAC Contract #

Model Number	Description
<b>MX-C303W</b>	30 PPM B&W / 30 PPM Color Desktop Color Document System includes 7-inch touchscreen, wireless connectivity, multitasking controller, 500 GB HDD with document filing system, PCL®6 and Adobe® PostScript® 3™ networking printing systems, network scanning, fax, 250-sheet paper drawer and 50-sheet multi-bypass tray, 50-sheet reversing single pass feeder (RSPF) and optional Sharp OSA® technology (Cloud Ready) - Application Communication and External Accounting modules. Toner included in box.
<b>MX-C304W</b>	30 PPM B&W / 30 PPM Color Desktop Color Document System includes Include 7-inch touchscreen, wireless connectivity, multitasking controller, 500 GB HDD with document filing system, PCL®6 and Adobe® PostScript® 3™ networking printing systems, network scanning, fax, 250-sheet paper drawer and 50-sheet multi-bypass tray, 100-sheet duplex single pass feeder (DSPF) and standard Sharp OSA® technology (Cloud Ready) - Application Communication and External Accounting modules. Toner included in box.

## Options & Accessories

### Tray Options

MX-CS14N	600 Sheet Paper Drawer
MX-DS22N	High Stand
MX-DS23N	Low Stand
MX-XB19	Anti Tip Kit (required if ordering 2 MX-CS14Ns and a MX-DS22N or 4 MX-CS14Ns and a MX-DS23N)

### Security

MX-FR61U	Data Security Kit
----------	-------------------

### Sharp OSA®

MX-AMX2L	OSA Application Communication Module (standard on MX-C304W)
MX-AMX3L	OSA External Accounting Module (standard on MX-C304W)

### Print

MX-PF10	Bar Code Font Kit
MX-PU10L	Direct Print Expansion Kit (standard on MX-C304W)
MX-EB19L	Enhanced Compression Kit - Compact PDF - (standard on MX-C304W)
MX-EB20L	OCR Expansion Kit (standard on MX-C304W)

### Fax

MX-FWX1L	Internet Fax Kit
----------	------------------

### Miscellaneous

AR-D5133NT	Digital 120 Volt, 15 Amps, 2 Outlets, Maximum Power Surge Protector
------------	---



## MX-C357F Desktop Color Document System

The MX-C357F desktop color document system delivers crisp, high-quality output with exceptional ease of use. This model provides customers with an intuitive user experience and the confidence of knowing their jobs will come out right the first time, every time. Designed with robust technology and software typically found on larger machines, the compact MX-C357F delivers the productivity you need with the performance and reliability you want in your workplace or home office.

### Features at a glance

- ◆ Productive Printing Speeds up to 35 ppm
- ◆ Standard copy, print, scan and fax capability right out-of-the-box
- ◆ Compact design easily fits into small offices or home workplaces in desktop or console configurations
- ◆ 50 sheet reversing single pass feeder scans at speeds up to 50 images per minute
- ◆ Offers up to five paper sources with available 1,451 sheet maximum paper capacity (letter and legal)
- ◆ 4.3" (diagonal) color touchscreen with adjustable viewing angle offers smooth, tablet-style interaction
- ◆ Supports popular mobile technologies, enabling users to easily print files from smartphones, tablets and even notebook computers
- ◆ Supports letter and legal size paper as well as envelopes through the standard paper drawer or bypass tray
- ◆ 1,200 x 1,200 dpi printing delivers crisp, clear images and text page after page
- ◆ Sharp Remote Device Manager (SRDM) allows administrators to have centralized control of the networked MFP in order to simplify installation and management
- ◆ Convenient front-facing USB port for easy direct printing of PDF files from a USB drive without having access to a PC
- ◆ Dimensions 17.4" (w) x 23.1" (d) x 18.2" (h)



MX-C357F shown with optional accessories

## MAC Contract #

Model Number	Description
<b>MX-C357F</b>	35 PPM Desktop Color Multi-Function Document System includes multitasking controller, 50-sheet RSPF, PCL 6 and PostScript® 3™ printing systems, network scanning, auto duplexing, 1 x 250-sheet paper drawer, 1-sheet bypass tray. Drum, developer and starter toner included (starter toner estimated yield: 3,000 images/cartridge color/ 2,000 images/cartridge black).

## Options & Accessories

### Tray Options

MX-CS18	550 Sheet Paper Drawer
MX-CS20	650 Sheet Dual Paper Feed Unit

### Miscellaneous

AR-D5133NT	Digital 120 Volt, 15 Amps, 2 Outlets, Maximum Power Surge Protector
------------	---

### Supplies

MX-C35TB	Black Toner Cartridge Estimated 9,000 images @ 5% Image Area/Cartridge
MX-C35TC	Cyan Toner Cartridge Estimated 6,000 images @ 5% Image Area/Cartridge
MX-C35TM	Magenta Toner Cartridge Estimated 6,000 images @ 5% Image Area/Cartridge
MX-C35TY	Yellow Toner Cartridge Estimated 6,000 images @ 5% Image Area/Cartridge
MX-C35DU-B	Black Imaging Kit (includes drum/developer) Estimated Yield - 125,000 Images/Package
MX-C35DU-S	Black and Color Imaging Kit (includes drum/developer) Estimated Yield - 125,000 Images/Package

Sharp's MX-2651, MX-3051, MX-3551, and MX-4051 Essentials Series color document systems are built using the latest technology available to deliver the performance, features and reliability needed in today's busy workplace environments. These MFPs are also easy to use and offer enhanced productivity, all to provide customers with a seamless, intuitive experience, and the confidence in knowing their jobs will come out right the first time, every time. The color document systems also offer leading-edge security features to help businesses protect their data and personal information.

Sharp's award-winning touchscreen display offers a user-friendly graphical interface with simplified Easy Modes, integrated user guides and quick access to network services. Sharp's MFP Voice feature, available on these models, allows you to interact with the machine with the power of natural language. In addition, these models integrate seamlessly with today's complex network environments and support popular cloud services and mobile technologies. Sharp's Application Portal allows administrators to add new apps or update existing apps right from the MFP.

The MX-2651, MX-3051, MX-3551 and MX-4051 Color Essentials Series are feature-rich and offer businesses powerful multitasking features at a strong value.

## Features at a glance

- ◆ 26 / 30 / 35 / 40 PPM Black & White - 26 / 30 / 35 / 40 PPM Color Output - **Networked**
- ◆ Paper capacity maximum: 6,300 sheets
  - 650 Standard - One 550 sheet paper drawer and 100 sheet bypass tray
  - Optional Stand with (1) x 550 sheet paper drawer
  - Optional Stand with (2) x 550 sheet paper drawers
  - Optional Stand with (3) x 550 sheet paper drawers
  - Optional Stand with (1) x 550 sheet paper drawer + 2,100 sheet split tandem paper drawers
  - Optional 3,000 sheet large capacity tray
- ◆ Standard security feature erases memory on the hard drive by overwriting data up to ten times
- ◆ Award-winning 10.1" (diagonally measured) customizable touchscreen display with a clean design enables easy access to features and functions when setting up jobs
- ◆ Standard 100-sheet reversing single-pass document feeder scans documents at speeds up to 80 images per minute
- ◆ Access popular cloud services, such as Microsoft® OneDrive™ for Business, SharePoint® Online, Google Drive™, Dropbox and more with Sharp's available Cloud Connect feature. And with Sharp's Application Portal, administrators can add or update apps right from the MFP.
- ◆ Sharp's MFP Voice feature enables users to control the device with simple verbal commands. Experience a hands-free, voice-first interaction powered by Amazon Alexa. (optional hardware required)
- ◆ Available wireless networking feature can connect directly to your network or to mobile devices for convenient scanning and printing with the Sharpdesk® Mobile App
- ◆ 600 x 600 dpi printing produces razor-sharp documents
- ◆ With the OCR Expansion Kit, you can easily convert documents to popular Microsoft® file formats as well as a variety of PDF formats. You can also add options to direct print these same file types from thumb drives, cloud applications and more. This function is available via Qualcomm® DirectOffice™ technology.
- ◆ Network ready PCL®6 and available Adobe® PostScript® 3™ printing systems ensure your documents print with the clarity and formatting you expect
- ◆ Color Consistency System delivers high quality color output and helps maintain optimum image balance and toner density page after page
- ◆ Flexible paper handling system supports media up to 110 lb cover and up to 12" x 18" through the paper trays
- ◆ Dimensions 24" (w) x 26" (d) x 33" (h)  
(Measurements for base model without Stand)



MX-3051 shown with optional accessories

MX-2651 / MX-3051 / MX-3551 / MX-4051

Networked Digital Color Copier

## MAC Contract #

Model Number	Description
<b>MX-2651</b>	26 PPM Networked B&W / Color Digital Copier with quad-core multitasking controller, 500 GB hard disk drive with document filing system, PCL®6 printing system, network printing, network scanning, 100-sheet reversing single-pass feeder, auto duplexing, 550-sheet paper drawer and 100-sheet bypass tray. Standard Security with End-of-Lease feature. Black and color developer is preinstalled in the machine. (650 sheets standard paper supply)
<b>MX-3051</b>	30 PPM Networked B&W / Color Digital Copier with quad-core multitasking controller, 500 GB hard disk drive with document filing system, PCL®6 printing system, network printing, network scanning, 100-sheet reversing single-pass feeder, auto duplexing, 550-sheet paper drawer and 100-sheet bypass tray. Standard Security with End-of-Lease feature. Black and color developer is preinstalled in the machine. (650 sheets standard paper supply)
<b>MX-3551</b>	35 PPM Networked B&W / Color Digital Copier with quad-core multitasking controller, 500 GB hard disk drive with document filing system, PCL®6 printing system, network printing, network scanning, 100-sheet reversing single-pass feeder, auto duplexing, 550-sheet paper drawer and 100-sheet bypass tray. Standard Security with End-of-Lease feature. Black and color developer is preinstalled in the machine. (650 sheets standard paper supply)
<b>MX-4051</b>	40 PPM Networked B&W / Color Digital Copier with quad-core multitasking controller, 500 GB hard disk drive with document filing system, PCL®6 printing system, network printing, network scanning, 100-sheet reversing single-pass feeder, auto duplexing, 550-sheet paper drawer and 100-sheet bypass tray. Standard Security with End-of-Lease feature. Black and color developer is preinstalled in the machine. (650 sheets standard paper supply)

## Options & Accessories

Output Options (Must Choose 1)

MX-TU16	Center Exit Tray Unit
MX-TR20 or	Job Separator (optional, for use with MX-TU16)
MX-FN27N	Inner Finisher
MX-PN14B or	3 Hole Punch Module (for use with MX-FN27N)
MX-FN28	Stacking Finisher - 1,000 Sheets (requires MX-RB25N)
MX-RB25N	Paper Pass Unit
MX-PN15B or	3 Hole Punch Module (for use with MX-FN28 or MX-FN29)
MX-FN29	Saddle Stitch Finisher - 1,000 Sheets (requires MX-RB25N)
MX-RB25N	Paper Pass Unit
MX-PN15B or	3 Hole Punch Module (for use with MX-FN28 or MX-FN29)
MX-FN30	Stacking Finisher - 3,000 Sheets (requires MX-RB25N)
MX-RB25N	Paper Pass Unit
MX-PN16B or	3 Hole Punch Module (for use with MX-FN30 or MX-FN31)
MX-FN31	Saddle Stitch Finisher - 3,000 Sheets (requires MX-RB25N)
MX-RB25N	Paper Pass Unit
MX-PN16B	3 Hole Punch Module (for use with MX-FN30 or MX-FN31)

MX-2651 / MX-3051 / MX-3551 / MX-4051

Networked Digital Color Copier

**MAC Contract #**

Model Number	Description
Paper Tray Options (Must Choose Cabinet or Stand)	
MX-60ABD	Deluxe Copier Cabinet
MX-DE25N	Stand with (1) x 550 Sheet Paper Drawer
MX-DE26N	Stand with (2) x 550 Sheet Paper Drawers
MX-DE27N	Stand with (3) x 550 Sheet Paper Drawers
MX-DE28N	Stand with (1) x 550 + 2,100 Sheet Split Tandem Paper Drawers
MX-DE29N	Low Stand with (1) x 550 Sheet Paper Drawer (for wheelchair access)
MX-LC17N	Large Capacity Tray - 3,000 Sheets (requires MX-DE25N, MX-DE26N, MX-DE27N or MX-DE28N)
MX-LT10	Long Paper Feeding Tray (for use with banner paper)
Exit Tray	
MX-TR19N	Right Side Exit Tray
Security	
MX-FR62U	Data Security Kit
Print	
MX-PK13L	Adobe PS3 Expansion Kit
MX-PF10	Bar Code Font Kit
MX-PU10L	Direct Print Expansion Kit
MX-EB18	Wireless LAN Adaptor
MX-EB19L	Enhanced Compression Kit (Compact PDF)
MX-EB20L	OCR Expansion Kit
AR-SU1	Stamp Unit (requires AR-SV1 Stamp Cartridge)
Sharp OSA®	
MX-AMX2L	OSA Application Communication Module
MX-AMX3L	OSA External Accounting Module
Fax	
MX-FX15	Facsimile Expansion Kit
MX-FWX1L	Internet Fax Kit
Miscellaneous	
AR-D5133NT	Digital 120 Volt, 15 Amps, 2 Outlets, Power Surge Protector
MX-UT10	Utility Table (recommended for MFP Voice function)

Sharp's MX-3071/3571/4071 Advanced Series color document systems are built using the latest technology available to deliver the performance, features and reliability needed in today's busy workplace environments. These MFPs are easy to use and offer enhanced productivity, all to provide customers with a seamless, intuitive experience, and the confidence in knowing their jobs will come out right the first time, every time. The color document systems also offer leading-edge security features to help businesses protect their data and personal information.

Sharp's award-winning touchscreen display offers a user-friendly graphical interface with simplified Easy Modes, integrated user guides and quick access to network services. Sharp's MFP Voice feature, available on these models, allows you to interact with the machine with the power of natural language. In addition, these models integrate seamlessly with today's complex network environments and support popular cloud services and mobile technologies. Sharp's Application Portal allows administrators to add new apps or update existing apps right from the MFP.

The MX-3071, MX-3571 and MX-4071 Color Advanced Series offers businesses powerful multitasking features enabling them to quickly execute the ever-changing workflow tasks of today's busy office environments.

## Features at a glance

- ◆ 30 / 35 / 40 PPM Black & White - 30 / 35 / 40 PPM Color Output - **Networked**
- ◆ Paper capacity maximum: 6,300 sheets
  - 650 Standard - One 550 sheet paper drawer and 100 sheet bypass tray
  - Optional Stand with (1) x 550 sheet paper drawer
  - Optional Stand with (2) x 550 sheet paper drawers
  - Optional Stand with (3) x 550 sheet paper drawers
  - Optional Stand with (1) x 550 sheet paper drawer + 2,100 sheet split tandem paper drawers
  - Optional 3,000 sheet large capacity tray
- ◆ Standard security feature erases memory on the hard drive by overwriting data up to ten times
- ◆ Automatic walk-up motion sensor wakes the machine from sleep mode so it's ready within seconds
- ◆ Award-winning 10.1" (diagonally measured) customizable touchscreen display with a clean design enables easy access to features and functions when setting up jobs
- ◆ Standard 150-sheet duplexing single-pass document feeder scans documents at speeds up to 220 images per minute
- ◆ Access popular cloud services, such as Microsoft® OneDrive™ for Business, SharePoint® Online, Google Drive™, Dropbox and more with Sharp's Cloud Connect feature. And with Sharp's Application Portal, administrators can add or update apps right from the MFP.
- ◆ Sharp's MFP Voice feature enables users to control the device with simple verbal commands. Experience a hands-free, voice-first interaction powered by Amazon Alexa. (optional hardware required)
- ◆ Standard wireless networking feature can connect directly to your network or to mobile devices for convenient scanning and printing with the Sharpdesk® Mobile App
- ◆ Full-size retractable keyboard allows quick, easy and accurate data entry
- ◆ 1200 x 1200 dpi printing produces razor-sharp documents
- ◆ Easily convert documents to popular Microsoft® file formats as well as a variety of PDF formats. You can also direct print these file types from thumb drives, cloud applications and more. This function is enabled via Qualcomm® DirectOffice™ technology.
- ◆ Network ready PCL®6 and Adobe® PostScript® 3™ printing systems ensure your documents print with the clarity and formatting you expect
- ◆ Color Consistency System delivers high quality color output and helps maintain optimum image balance and toner density page after page
- ◆ Flexible paper handling system supports media up to 110 lb cover and up to 12" x 18" through the paper trays
- ◆ Dimensions 24" (w) x 26" (d) x 33" (h)  
(Measurements for base model without Stand)



MX-4071 shown with optional accessories



# MX-3071 / MX-3571 / MX-4071

## Networked Digital Color Copier

### MAC Contract #

Model Number	Description
<b>MX-3071</b>	30 PPM Networked B&W / Color Digital Copier with walk-up motion sensor, wireless connectivity, quad-core multitasking controller, retractable keyboard, Sharp OSA® technology (Cloud Ready) - Application Communication and External Accounting modules, 500 GB hard disk drive with document filing system, PCL®6 and Adobe® PostScript® 3™ printing systems, network printing, network scanning, 150-sheet duplexing single-pass feeder, auto duplexing, 550-sheet paper drawer and 100-sheet bypass tray. Standard Security with End-of-Lease feature. Black and color developer is preinstalled in the machine. (650 sheets standard paper supply)
<b>MX-3571</b>	35 PPM Networked B&W / Color Digital Copier with walk-up motion sensor, wireless connectivity, quad-core multitasking controller, retractable keyboard, Sharp OSA® technology (Cloud Ready) - Application Communication and External Accounting modules, 500 GB hard disk drive with document filing system, PCL®6 and Adobe® PostScript® 3™ printing systems, network printing, network scanning, 150-sheet duplexing single-pass feeder, auto duplexing, 550-sheet paper drawer and 100-sheet bypass tray. Standard Security with End-of-Lease feature. Black and color developer is preinstalled in the machine. (650 sheets standard paper supply)
<b>MX-4071</b>	40 PPM Networked B&W / Color Digital Copier with walk-up motion sensor, wireless connectivity, quad-core multitasking controller, retractable keyboard, Sharp OSA® technology (Cloud Ready) - Application Communication and External Accounting modules, 500 GB hard disk drive with document filing system, PCL®6 and Adobe® PostScript® 3™ printing systems, network printing, network scanning, 150-sheet duplexing single-pass feeder, auto duplexing, 550-sheet paper drawer and 100-sheet bypass tray. Standard Security with End-of-Lease feature. Black and color developer is preinstalled in the machine. (650 sheets standard paper supply)

### Options & Accessories

Output Options (Must Choose 1)

MX-TU16	Center Exit Tray Unit
MX-TR20 or	Job Separator (optional, for use with MX-TU16)
MX-FN27N	Inner Finisher
MX-PN14B or	3 Hole Punch Module (for use with MX-FN27N)
MX-FN28	Stacking Finisher - 1,000 Sheets (requires MX-RB25N)
MX-RB25N	Paper Pass Unit
MX-PN15B or	3 Hole Punch Module (for use with MX-FN28 or MX-FN29)
MX-FN29	Saddle Stitch Finisher - 1,000 Sheets (requires MX-RB25N)
MX-RB25N	Paper Pass Unit
MX-PN15B or	3 Hole Punch Module (for use with MX-FN28 or MX-FN29)
MX-FN30	Stacking Finisher - 3,000 Sheets (requires MX-RB25N)
MX-RB25N	Paper Pass Unit
MX-PN16B or	3 Hole Punch Module (for use with MX-FN30 or MX-FN31)
MX-FN31	Saddle Stitch Finisher - 3,000 Sheets (requires MX-RB25N)
MX-RB25N	Paper Pass Unit
MX-PN16B	3 Hole Punch Module (for use with MX-FN30 or MX-FN31)

MX-3071 / MX-3571 / MX-4071  
Networked Digital Color Copier

## MAC Contract #

Model Number	Description
Paper Tray Options (Must Choose Cabinet or Stand)	
MX-60ABD	Deluxe Copier Cabinet
MX-DE25N	Stand with (1) x 550 Sheet Paper Drawer
MX-DE26N	Stand with (2) x 550 Sheet Paper Drawers
MX-DE27N	Stand with (3) x 550 Sheet Paper Drawers
MX-DE28N	Stand with (1) x 550 + 2,100 Sheet Split Tandem Paper Drawers
MX-DE29N	Low Stand with (1) x 550 Sheet Paper Drawer (for wheelchair access)
MX-LC17N	Large Capacity Tray - 3,000 Sheets (requires MX-DE25N, MX-DE26N, MX-DE27N or MX-DE28N)
MX-LT10	Long Paper Feeding Tray (for use with banner paper)
Exit Tray	
MX-TR19N	Right Side Exit Tray
Security	
MX-FR62U	Data Security Kit
Print	
MX-PF10	Bar Code Font Kit
AR-SU1	Stamp Unit (requires AR-SV1 Stamp Cartridge)
Fax	
MX-FX15	Facsimile Expansion Kit
MX-FWX1L	Internet Fax Kit
Miscellaneous	
AR-D5133NT	Digital 120 Volt, 15 Amps, 2 Outlets, Power Surge Protector
MX-UT10	Utility Table (recommended for MFP Voice function)

The MX-C407F and MX-C507F desktop color document systems deliver crisp, high-quality output with exceptional ease of use. These models provide customers with an intuitive user experience and the confidence of knowing their jobs will come out right the first time, every time. Designed with robust features and technology typically found on larger machines, the MX-C407F and MX-C507F deliver the productivity you need with the performance and reliability you want in your workplace or home office.

### Features at a glance

- ◆ Productive Printing Speeds - 40 ppm (MX-C407F) and 50 ppm (MX-C507F)
- ◆ Standard copy, print, scan and fax capability right out-of-the-box
- ◆ Compact design easily fits into small offices or home workplaces in desktop or console configurations
- ◆ 50 sheet reversing document feeder scans both sides of a document in a single pass for enhanced productivity
- ◆ Offers up to five paper sources with available 2,300 sheet maximum paper capacity (letter and legal)
- ◆ 7" (diagonal) color touchscreen with adjustable viewing angle offers smooth, tablet-style interaction
- ◆ Standard optical character recognition (OCR) on the MX-C507F and optional OCR on the MX-C407F allows users to convert a scanned document into a searchable PDF file or into an editable Word file
- ◆ Supports popular mobile technologies, enabling users to easily print files from smartphones, tablets and even notebook computers
- ◆ Supports letter and legal size paper as well as envelopes through the standard paper drawer or bypass tray
- ◆ 1,200 x 1,200 dpi resolution produces razor-sharp documents. PostScript® 3™ and PCL®6 drivers offer extensive job control
- ◆ Sharp Remote Device Manager (SRDM) allows administrators to have centralized control of the networked MFP in order to simplify installation and management
- ◆ Standard compact PDF feature dramatically reduces the file size of most color scanned documents
- ◆ Convenient USB port located in the front of the device lets users access the machine quickly when printing direct from a USB drive
- ◆ Dimensions 19.9" (w) x 21" (d) x 25.5" (h)



MX-C507F shown with optional accessories

## MAC Contract #

Model Number	Description
<b>MX-C407F</b>	40 PPM Desktop Color Multi-Function Document System includes multitasking controller, 50-sheet RSPF, PCL 6 and PostScript® 3™ printing systems, network scanning, auto duplexing, 1 x 550-sheet paper drawer, 100-sheet bypass tray. Drum, developer and starter toner included (starter toner estimated yield: 7,000 images/cartridge).
<b>MX-C507F</b>	50 PPM Desktop Color Multi-Function Document System includes multitasking controller, 50-sheet RSPF, PCL 6 and PostScript® 3™ printing systems, network scanning, auto duplexing, 1 x 550-sheet paper drawer, 100-sheet bypass tray. Drum, developer and starter toner included (starter toner estimated yield: 7,000 images/cartridge).

## Options & Accessories

### Tray Options

MX-CS17	550 Sheet Paper Drawer
---------	------------------------

### Miscellaneous

AR-D5133NT	Digital 120 Volt, 15 Amps, 2 Outlets, Maximum Power Surge Protector
------------	---

### Supplies

MX-C50TB	Black Toner Cartridge Estimated 20,000 images @ 5% Image Area/Cartridge
MX-C50TC	Cyan Toner Cartridge Estimated 13,000 images @ 5% Image Area/Cartridge
MX-C50TM	Magenta Toner Cartridge Estimated 13,000 images @ 5% Image Area/Cartridge
MX-C50TY	Yellow Toner Cartridge Estimated 13,000 images @ 5% Image Area/Cartridge
MX-C50DU-B	Black Imaging Kit (includes drum/developer) Estimated Yield - 150,000 Images/Package
MX-C50DU-S	Cyan/Magenta/Yellow Imaging Kit (includes drum/developer) Estimated Yield - 150,000 Images/Package

Sharp's MX-5051 and MX-6051 Essentials Series color document systems are built using the latest technology available to deliver the performance, features and reliability needed in today's busy workplace environments. These MFPs are also easy to use and offer enhanced productivity, all to provide customers with a seamless, intuitive experience, and the confidence in knowing their jobs will come out right the first time, every time. The Color Essentials Series also offers leading-edge security features to help businesses protect their data and personal information.

Sharp's award-winning touchscreen display offers a user-friendly graphical interface with simplified Easy Modes, integrated user guides and quick access to network services. Sharp's MFP Voice feature, available for these models, allows you to interact with the machine with the power of natural language. In addition, these models integrate seamlessly with today's complex network environments and support popular cloud services and mobile technologies. Sharp's Application Portal enables administrators to easily add new apps or update existing apps right from the MFP.

The MX-5051 and MX-6051 Color Essentials Series are feature-rich and offer businesses powerful multitasking features at a strong value.

## Features at a glance

- ◆ 50 / 60 PPM Black & White - 50 / 60 PPM Color Output - **Networked**
- ◆ Paper capacity maximum: 6,300 sheets
  - 650 Standard - One 550 sheet paper drawer and 100 sheet bypass tray
  - Optional Stand with (1) x 550 sheet paper drawer
  - Optional Stand with (2) x 550 sheet paper drawers
  - Optional Stand with (3) x 550 sheet paper drawers
  - Optional Stand with (1) x 550 sheet paper drawer + 2,100 sheet split tandem paper drawers
  - Optional 3,000 sheet large capacity tray
- ◆ Standard security feature erases memory on the hard drive by overwriting data up to ten times
- ◆ Award-winning 10.1" (diagonally measured) customizable touchscreen display with a clean design enables easy access to features and functions when setting up jobs
- ◆ Standard 100-sheet reversing single-pass document feeder scans documents at speeds up to 80 images per minute
- ◆ Access popular cloud services, such as Microsoft® OneDrive™ for Business, SharePoint® Online, Google Drive™, Dropbox and more with Sharp's available Cloud Connect feature. And with Sharp's Application Portal, administrators can add or update apps right from the MFP.
- ◆ Sharp's MFP Voice feature enables users to control the device with simple verbal commands. Experience a hands-free, voice-first interaction with Amazon Alexa. (optional hardware required)
- ◆ Available wireless networking feature can connect directly to your network or to mobile devices for convenient scanning and printing with the Sharpdesk® Mobile App
- ◆ 1200 x 1200 dpi printing produces razor-sharp documents
- ◆ With the available OCR Expansion Kit, you can easily convert documents to popular Microsoft® file formats as well as a variety of PDF formats (PostScript Kit required). You can also add options to direct print these same file types from thumb drives, cloud applications and more. This function is available via Qualcomm® DirectOffice™ technology.
- ◆ Network ready PCL®6 and available Adobe® PostScript® 3™ printing systems ensure your documents print with the clarity and formatting you expect
- ◆ Color Consistency System delivers high quality color output and helps maintain optimum image balance and toner density page after page
- ◆ Flexible paper handling system supports media up to 110 lb cover and up to 12" x 18" through the paper trays
- ◆ Dimensions 24" (w) x 26" (d) x 33" (h)  
(Measurements for base model without Stand)



MX-5051 shown with optional accessories

## MAC Contract #

Model Number	Description
<b>MX-5051</b>	50 PPM Networked B&W / Color Digital Copier with quad-core multitasking controller, 500 GB hard disk drive with document filing system, PCL®6 printing system, network printing, network scanning, 100-sheet reversing single-pass feeder, auto duplexing, 550-sheet paper drawer and 100-sheet bypass tray. Standard Security with End-of-Lease feature. Black and color developer is preinstalled in the machine. (650 sheets standard paper supply)
<b>MX-6051</b>	60 PPM Networked B&W / Color Digital Copier with quad-core multitasking controller, 500 GB hard disk drive with document filing system, PCL®6 printing system, network printing, network scanning, 100-sheet reversing single-pass feeder, auto duplexing, 550-sheet paper drawer and 100-sheet bypass tray. Standard Security with End-of-Lease feature. Black and color developer is preinstalled in the machine. (650 sheets standard paper supply)

## Options & Accessories

Output Options (Must Choose 1)

MX-TU16	Center Exit Tray Unit
MX-TR20 or	Job Separator (optional, for use with MX-TU16)
MX-FN27N	Inner Finisher
MX-PN14B or	3 Hole Punch Module (for use with MX-FN27N)
MX-FN28	Stacking Finisher - 1,000 Sheets (requires MX-RB25N)
MX-RB25N	Paper Pass Unit
MX-PN15B or	3 Hole Punch Module (for use with MX-FN28 or MX-FN29)
MX-FN29	Saddle Stitch Finisher - 1,000 Sheets (requires MX-RB25N)
MX-RB25N	Paper Pass Unit
MX-PN15B or	3 Hole Punch Module (for use with MX-FN28 or MX-FN29)
MX-FN30	Stacking Finisher - 3,000 Sheets (requires MX-RB25N)
MX-RB25N	Paper Pass Unit
MX-PN16B or	3 Hole Punch Module (for use with MX-FN30 or MX-FN31)
MX-FN31	Saddle Stitch Finisher - 3,000 Sheets (requires MX-RB25N)
MX-RB25N	Paper Pass Unit
MX-PN16B	3 Hole Punch Module (for use with MX-FN30 or MX-FN31)



## MAC Contract #

Model Number	Description
Paper Tray Options (Must Choose Cabinet or Stand)	
MX-60ABD	Deluxe Copier Cabinet
MX-DE25N	Stand with (1) x 550 Sheet Paper Drawer
MX-DE26N	Stand with (2) x 550 Sheet Paper Drawers
MX-DE27N	Stand with (3) x 550 Sheet Paper Drawers
MX-DE28N	Stand with (1) x 550 + 2,100 Sheet Split Tandem Paper Drawers
MX-DE29N	Low Stand with (1) x 550 Sheet Paper Drawer (for wheelchair access)
MX-LC17N	Large Capacity Tray - 3,000 Sheets (requires MX-DE25N, MX-DE26N, MX-DE27N or MX-DE28N)
MX-LT10	Long Paper Feeding Tray (for use with banner paper)
Exit Tray	
MX-TR19N	Right Side Exit Tray
Security	
MX-FR62U	Data Security Kit
Print	
MX-PK13L	Adobe PS3 Expansion Kit
MX-PF10	Bar Code Font Kit
MX-PU10L	Direct Print Expansion Kit
MX-EB18	Wireless LAN Adaptor
MX-EB19L	Enhanced Compression Kit (Compact PDF)
MX-EB20L	OCR Expansion Kit
AR-SU1	Stamp Unit (requires AR-SV1 Stamp Cartridge)
Sharp OSA®	
MX-AMX2L	OSA Application Communication Module
MX-AMX3L	OSA External Accounting Module
Fax	
MX-FX15	Facsimile Expansion Kit
MX-FWX1L	Internet Fax Kit
Miscellaneous	
AR-D5143NT	Digital 120 Volt, 20 Amps, 2 Outlets, Power Surge Protector
MX-UT10	Utility Table (recommended for MFP Voice function)

## MX-5071 / MX-6071 Networked Digital Color Copier

Sharp's MX-5071/6071 Advanced Series color document systems are built using the latest technology available to deliver the performance, features and reliability needed in today's busy workplace environments. These MFPs are easy to use and offer enhanced productivity, all to provide customers with a seamless, intuitive experience, and the confidence in knowing their jobs will come out right the first time, every time. The Color Advanced Series also offers leading-edge security features to help businesses protect their data and personal information.

Sharp's award-winning touchscreen display offers a user-friendly graphical interface with simplified Easy Modes, integrated user guides and quick access to network services. Sharp's MFP Voice feature, available for these models, allows you to interact with the machine with the power of natural language. In addition, these models integrate seamlessly with today's complex network environments and support popular cloud services and mobile technologies. Sharp's Application Portal enables administrators to easily add new apps or update existing apps right from the MFP.

The MX-5071 and MX-6071 Color Advanced Series offers businesses powerful multitasking features, enabling them to quickly execute the ever-changing workflow tasks of today's busy office environments.

---

### Features at a glance

- ◆ 50 / 60 PPM Black & White - 50 / 60 PPM Color Output - **Networked**
- ◆ Paper capacity maximum: 6,300 sheets
  - 650 Standard - One 550 sheet paper drawer and 100 sheet bypass tray
  - Optional Stand with (1) x 550 sheet paper drawer
  - Optional Stand with (2) x 550 sheet paper drawers
  - Optional Stand with (3) x 550 sheet paper drawers
  - Optional Stand with (1) x 550 sheet paper drawer + 2,100 sheet split tandem paper drawers
  - Optional 3,000 sheet large capacity tray
- ◆ Standard security feature erases memory on the hard drive by overwriting data up to ten times
- ◆ Automatic walk-up motion sensor wakes the machine from sleep mode so it's ready within seconds
- ◆ Award-winning 10.1" (diagonally measured) customizable touchscreen display with a clean design enables easy access to features and functions when setting up jobs
- ◆ Standard 150-sheet duplexing single-pass document feeder scans documents at speeds up to 220 images per minute
- ◆ Access popular cloud services, such as Microsoft® OneDrive™ for Business, SharePoint® Online, Google Drive™, Dropbox and more with Sharp's Cloud Connect feature. And with Sharp's Application Portal, administrators can add or update apps right from the MFP.
- ◆ Sharp's MFP Voice feature enables users to control the device with simple verbal commands. Experience a hands-free, voice-first interaction with Amazon Alexa. (optional hardware required)
- ◆ Standard wireless networking feature can connect directly to your network or to mobile devices for convenient scanning and printing with the Sharpdesk® Mobile App
- ◆ Full-size retractable keyboard allows quick, easy and accurate data entry
- ◆ 1200 x 1200 dpi printing produces razor-sharp documents
- ◆ Easily convert documents to popular Microsoft® file formats as well as a variety of PDF formats. You can also direct print these file types from thumb drives, cloud applications and more. This function is enabled via Qualcomm® DirectOffice™ technology.
- ◆ Network ready PCL®6 and Adobe® PostScript® 3™ printing systems ensure your documents print with the clarity and formatting you expect
- ◆ Color Consistency System delivers high quality color output and helps maintain optimum image balance and toner density page after page
- ◆ Flexible paper handling system supports media up to 110 lb cover and up to 12" x 18" through the paper trays
- ◆ Dimensions 24" (w) x 26" (d) x 33" (h)  
(Measurements for base model without Stand)



MX-6071 shown with optional accessories

## MAC Contract #

Model Number	Description
<b>MX-5071</b>	50 PPM Networked B&W / Color Digital Copier with walk-up motion sensor, wireless connectivity, quad-core multitasking controller, retractable keyboard, Sharp OSA® technology (Cloud Ready) - Application Communication and External Accounting modules, 500 GB hard disk drive with document filing system, PCL®6 and Adobe® PostScript® 3™ printing systems, network printing, network scanning, 150-sheet duplexing single-pass feeder, auto duplexing, 550-sheet paper drawer and 100-sheet bypass tray. Standard Security with End-of-Lease feature. Black and color developer is preinstalled in the machine. (650 sheets standard paper supply)
<b>MX-6071</b>	60 PPM Networked B&W / Color Digital Copier with walk-up motion sensor, wireless connectivity, quad-core multitasking controller, retractable keyboard, Sharp OSA® technology (Cloud Ready) - Application Communication and External Accounting modules, 500 GB hard disk drive with document filing system, PCL®6 and Adobe® PostScript® 3™ printing systems, network printing, network scanning, 150-sheet duplexing single-pass feeder, auto duplexing, 550-sheet paper drawer and 100-sheet bypass tray. Standard Security with End-of-Lease feature. Black and color developer is preinstalled in the machine. (650 sheets standard paper supply)

## Options & Accessories

Output Options (Must Choose 1)

MX-TU16	Center Exit Tray Unit
MX-TR20 or	Job Separator (optional, for use with MX-TU16)
MX-FN27N	Inner Finisher
MX-PN14B or	3 Hole Punch Module (for use with MX-FN27N)
MX-FN28	Stacking Finisher - 1,000 Sheets (requires MX-RB25N)
MX-RB25N	Paper Pass Unit
MX-PN15B or	3 Hole Punch Module (for use with MX-FN28 or MX-FN29)
MX-FN29	Saddle Stitch Finisher - 1,000 Sheets (requires MX-RB25N)
MX-RB25N	Paper Pass Unit
MX-PN15B or	3 Hole Punch Module (for use with MX-FN28 or MX-FN29)
MX-FN30	Stacking Finisher - 3,000 Sheets (requires MX-RB25N)
MX-RB25N	Paper Pass Unit
MX-PN16B or	3 Hole Punch Module (for use with MX-FN30 or MX-FN31)
MX-FN31	Saddle Stitch Finisher - 3,000 Sheets (requires MX-RB25N)
MX-RB25N	Paper Pass Unit
MX-PN16B	3 Hole Punch Module (for use with MX-FN30 or MX-FN31)

**MAC Contract #**

Model Number	Description
Paper Tray Options (Must Choose Cabinet or Stand)	
MX-60ABD	Deluxe Copier Cabinet
MX-DE25N	Stand with (1) x 550 Sheet Paper Drawer
MX-DE26N	Stand with (2) x 550 Sheet Paper Drawers
MX-DE27N	Stand with (3) x 550 Sheet Paper Drawers
MX-DE28N	Stand with (1) x 550 + 2,100 Sheet Split Tandem Paper Drawers
MX-DE29N	Low Stand with (1) x 550 Sheet Paper Drawer (for wheelchair access)
MX-LC17N	Large Capacity Tray - 3,000 Sheets (requires MX-DE25N, MX-DE26N, MX-DE27N or MX-DE28N)
MX-LT10	Long Paper Feeding Tray (for use with banner paper)
Exit Tray	
MX-TR19N	Right Side Exit Tray
Security	
MX-FR62U	Data Security Kit
Print	
MX-PF10	Bar Code Font Kit
AR-SU1	Stamp Unit (requires AR-SV1 Stamp Cartridge)
Fax	
MX-FX15	Facsimile Expansion Kit
MX-FWX1L	Internet Fax Kit
Miscellaneous	
AR-D5143NT	Digital 120 Volt, 20 Amps, 2 Outlets, Power Surge Protector
MX-UT10	Utility Table (recommended for MFP Voice function)

## MX-7081 / MX-8081 Networked Digital Color Copier

The Sharp MX-7081 and MX-8081 color document systems are designed using the latest technology available to deliver the performance, features and reliability needed in today's busy workplace. Built for high-volume environments, central reprographics departments and copy rooms, these document systems are complemented by the robust paper handling and productive output capabilities once found only in commercial print facilities. These models also offer leading-edge security features to help businesses protect their data and personal information.

Sharp's next generation Color Consistency System helps ensure brilliant color output, page-after-page and job-after-job, for repeatable, high-quality results. Businesses can rest assured that producing professional-looking color documents in-house can be easier and more economical than ever before.

The MX-7071 and MX-8081 high speed color document systems are also easy to use and offer enhanced productivity, all to provide customers with a seamless, intuitive experience and the confidence in knowing their jobs will come out right the first time, every time.

### Features at a glance

- ◆ 75 / 80 PPM Black & White - 70 / 80 PPM Color Output - **Networked**
- ◆ Paper capacity maximum: 8,500 sheets
  - 3,100 Sheets Standard Paper Capacity - Tandem Sheet Drawer: One 1,200 sheet paper tray, One 800 sheet paper tray, Two 500 sheet paper trays and One 100 Sheet Multi-bypass Tray
  - Optional 3,500 sheet letter-size large capacity cassette
  - Optional 3,000 sheet letter / legal / ledger-size large capacity cassette
  - Optional 5,000 sheet letter / legal / ledger / 12" x 18" large capacity 2 drawer tray
- ◆ Full-size retractable keyboard allows quick, easy and accurate data entry
- ◆ Advanced finishing options including a multi-folding unit and multi-position staple and saddle finisher selection
- ◆ A powerful embedded Fiery® Color Print Server is available for environments that require precision color control and job management
- ◆ Supports the Sharp OSA® development platform
- ◆ The available Sharp MFP Voice feature enables users to control the device with simple verbal commands. Experience hands-free, voice-first interaction with Amazon Alexa.
- ◆ The Sharp Color Consistency System with next generation image process control delivers high quality color output and maintains optimum color balance and toner density page after page
- ◆ Quickly scan both sides of a document at once with the standard 300 Sheet Duplexing Single-Pass Feeder
- ◆ Scan preview feature offers on-the-fly page editing with easy fingertip navigation
- ◆ Easily access popular cloud applications, including Microsoft® OneDrive® for Business, SharePoint® Online, Box and Google Drive™, with the Sharp Cloud Connect feature.
- ◆ Triple air-feed paper handling option offers high reliability and is virtually maintenance free
- ◆ 1200 x 1200 dpi printing provides beautiful images and enhanced clarity for fine details such as small text and graphics
- ◆ Scans documents at up to 240 images per minute in both Black and Color
- ◆ Network ready PCL®6/PS3 printing system with direct print function
- ◆ Flexible paper handling system feeds up to 110 lb cover stock through paper trays and through bypass tray
- ◆ Dimensions 33-1/4" (w) x 33-1/4" (d) x 49" (h)



MX-8081 shown with optional accessories

## MAC Contract #

Model Number	Description
<b>MX-7081</b>	75 PPM B&W / 70 PPM Color Networked Digital Copier with multi-processor controller, 300 sheet/150 business card Duplexing Single Pass Feeder, 3,100 Sheet Paper Capacity (2,000 sheet tandem tray/2 x 500 sheet trays/MX-MF10 100 sheet multi-bypass tray), Wireless Connectivity, 1 TB hard disk drive with Document Filing System, PCL 6/Adobe® PostScript® 3™ printing systems, Network Printing, Scanning, Retractable Keyboard and Application Communication and External Accounting Modules. Standard Security including End-of-Lease data erase feature. Black and color developer is included. (3,100 sheets standard paper supply)
<b>MX-8081</b>	80 PPM Networked B&W / Color Digital Copier with multi-processor controller, 300 sheet/150 business card Duplexing Single Pass Feeder, 3,100 sheet paper capacity (2,000-sheet tandem tray/2 x 500-sheet trays/MX-MF10 100 sheet multi-bypass tray), Wireless Connectivity, 1 TB hard disk drive with Document Filing System, PCL 6/Adobe® PostScript® 3™ printing systems, Network Printing, Scanning, Retractable Keyboard and Application Communication and External Accounting Modules. Standard Security including End-of-Lease data erase feature. Black and color developer is included. (3,100 sheets standard paper supply)

## Options & Accessories

### Tray Options

MX-LCX3N	3,000 Sheet Large Capacity Cassette (letter / letter-R / legal / ledger)
OR	
MX-LC12	3,500 Sheet Large Capacity Tray (letter)
OR	
MX-LC13N	5,000 Sheet Large Capacity Two Drawer Air Feed Tray (letter / letter-R / legal / ledger) - requires MX-RB14
MX-RB14	Paper Pass Unit
MX-MF11	500 Sheet Multi-Bypass Tray (requires MX-LC13N)
OR	
MX-LT10	Long Paper Feeding Tray (for use with banner paper)

### Exit Tray

MX-TR14	Right Side Exit Tray
---------	----------------------

### Finishing Options (Must Choose 1)

MX-TU14	Center Exit Tray (required if no finishing option included)
OR	
MX-FN34	65 Sheet Staple Finisher (3,000 sheet output capacity) - requires MX-RB12N
MX-RB12N	Paper Pass Unit
MX-PN16B	Punch Unit (optional, not required) - for use with MX-FN34 or MX-FN35
MX-SL10N	Status Indicator
OR	
MX-FN35	65 Sheet Staple / Saddle Stitch Finisher (3,000 sheet output capacity) - requires MX-RB12N
MX-RB12N	Paper Pass Unit
MX-PN16B	Punch Unit (optional, not required) - for use with MX-FN34 or MX-FN35
MX-SL10N	Status Indicator
OR	
MX-FN21	100 Sheet Staple Finisher (4,000 sheet output capacity) - requires MX-RB12N and MX-RB27
MX-RB12N	Paper Pass Unit
MX-RB27	Curl Correction Unit
<i>optional accessories for MX-FN21 configuration</i>	
MX-PN13B	Punch Unit - for use with MX-FN21 or MX-FN22
MX-CF11	2 Tray Post Process Page Inserter - requires MX-FD10 or MX-RB13
MX-RB13	Relay Unit - requires MX-FN21 or MX-FN22, cannot be used with MX-FD10
MX-FD10	Multi Folding Unit - requires MX-FN21 or MX-FN22, cannot be used with MX-RB13
MX-SL10N	Status Indicator
OR	



## MAC Contract #

Model Number	Description
Finishing Options (Continued)	
MX-FN22	100 Sheet Staple / Saddle Stitch Finisher (4,000 sheet output capacity) - requires MX-RB12N and MX-RB27
MX-RB12N	Paper Pass Unit
MX-RB27	Curl Correction Unit
<i>optional accessories for MX-FN22 configuration</i>	
MX-PN13B	Punch Unit - for use with MX-FN21 or MX-FN22
MX-CF11	2 Tray Post Process Page Inserter - requires MX-FD10 or MX-RB13
MX-RB13	Relay Unit - requires MX-FN21 or MX-FN22, cannot be used with MX-FD10
MX-FD10	Multi Folding Unit - requires MX-FN21 or MX-FN22, cannot be used with MX-RB13
MX-SL10N	Status Indicator
MX-TM10	Trimming Unit
GBC Binding - available for use with the MX-FN21 or MX-FN22	
<b>Main Unit Components</b>	
MX-GBCX2	GBC SmartPunch Pro™ - requires MX-RB13
<b>GBC Accessories</b>	
MX-GBC03	3-Hole Die Set
MX-GBC11	11-Hole VeloBind Set
MX-GBC19	19-Hole CombBind Die Set
MX-GBC21	21-Hole WireBind Die Set
MX-GBC32	32-Hole WireBind Die Set
MX-GBC44	44-Hole Color Coil Die Set
MX-GBC32PRO	32-Hole ProClick Die Set
MX-GBC51	19-Hole CombBind Heavy Duty Die Set
MX-GBC52	44-Hole Color Coil Heavy Duty Die Set
MX-GBC53	3-Hole Heavy Duty Die Set
Security Options	
MX-FR65U	Data Security Kit
Print	
MX-PF10	Bar Code Font Kit
AR-SU1	Stamp Unit (requires AR-SV1 Stamp Cartridge)
OR	
MX-PX15	Fiery Interface Kit
MX-PE15	Fiery Color Print Server (requires the MX-PX15)
MX-PEHF12	Fiery Hot Folders/Virtual Printers Production Features
MX-PECR1Y	Fiery ColorRight 1 Year Subscription
MX-PECR2Y	Fiery ColorRight 2 Year Subscription
MX-PECR3Y	Fiery ColorRight 3 Year Subscription
MX-PECR4Y	Fiery ColorRight 4 Year Subscription
MX-PECR5Y	Fiery ColorRight 5 Year Subscription
MX-PEAM1Y	Fiery Automation 1 Year Subscription
MX-PEAM2Y	Fiery Automation 2 Year Subscription
MX-PEAM3Y	Fiery Automation 3 Year Subscription
MX-PEAM4Y	Fiery Automation 4 Year Subscription
MX-PEAM5Y	Fiery Automation 5 Year Subscription
MX-PEFIS	Fiery Impose Software
MX-PEFC	Fiery Compose Software
MX-PEIC	Fiery Impose + Fiery Compose Software Bundle
MX-PEAAEP	Adobe Acrobat Pro 2017 + Enfocus PitStop Edit 2019 (for use with Fiery Impose/Compose/JobMaster Software)
MX-PESP	EFI ES-2000 Spectrophotometer
MX-PECPS1	Fiery Color Profiler Suite (includes MX-PECPM 1-year SMSA)
MX-PECPS1	Fiery Color Profiler Suite + EFI ES-2000 Spectrophotometer (includes MX-PECPM 1-year SMSA)
MX-PECPM	Fiery Color Profiler Suite Additional 1-year Software Maintenance and Support Agreement (SMSA) (available for MX-PECPS1 or MX-PECPS1)

**MAC Contract #**

Model Number	Description
Fax	
MX-FWX1L	Internet Fax Expansion Kit
MX-FX15	Fax Expansion Kit
Miscellaneous	
MX-E524ZNT	Digital 208/230 Volt, 20 Amps Power Surge Protector (Recommended for MX-7081/8081 main unit)
AR-D5133NT	Digital 120 Volt, 15 Amps, 2 Outlets, Power Surge Protector (Recommended for MX-FN21, MX-FN22 and MX-LC13N)

The Pro Series MX-7090N and MX-8090N light production color document systems offer proven technology, award-winning features and exceptional image quality at speeds up to 80 ppm. Built with the customer in mind, producing professional-looking documents has never been easier. Organizations, large and small, will benefit from the versatility of the available input and output options. Options ranging from the air-feed paper handling option, to the production booklet finisher that prints up to a 120 page full-bleed booklets, the Pro Series can help your organization produce more jobs in-house, saving time and money.

These models simplify workflow like never before with the large 15.4" touchscreen display utilizing the latest controller architecture and intuitive user interface Sharp has to offer. These models also offer a choice of three powerful print controllers, including the standard Sharp print controller and two optional Fiery Print Servers operating on the latest FS300 Pro and FS300 platforms enabling customers freedom to choose the right fit for them and custom tailored to their workflow requirements.

The MX-7090N and MX-8090N also support Sharp OSA® technology, which makes integration with network applications and cloud services simple and easy. Sharp's multi-layered Security Suite can help protect your data and personal information from the first day of operation to the time of trade-in.

### Features at a glance

- ◆ 70 / 80 PPM Black & White - 70 / 80 PPM Color Output - **Networked**
- ◆ Paper capacity maximum: 13,500 sheets
  - 3,000 Sheets Standard Paper Capacity - Tandem Sheet Drawer: One 1,200 sheet paper tray, One 800 sheet paper tray and Two 500 sheet paper trays
  - Optional 3,000 sheet letter / legal / ledger-size large capacity cassette
  - Optional 3,500 sheet letter large capacity tray
  - Optional 5,000 sheet letter / legal / ledger-size large capacity tray
- ◆ Advanced finishing options including a multi-folding unit and multi-position staple and saddle finisher selection
- ◆ Sharp's fuser technology ensures consistent edge-to-edge printing with a uniform finish across the page for professional-looking full image documents
- ◆ Triple air-feed paper handling option offers high reliability and is virtually maintenance free
- ◆ Flexible modular design provides a wide variety of configurations from basic high-speed copying and printing to professional folding and booklet making
- ◆ Print engine paper catalog stores up to 1,000 media profiles to help maintain optimum print quality
- ◆ Large 15.4" (diagonally measured) multi-position touch-screen display with swing-out keyboard
- ◆ Sharp's Color Consistency System with next generation image process control delivers high-quality color output and maintains optimum color balance and toner density page after page
- ◆ Quickly scan both sides of a document at once with the standard 150 Sheet Duplexing Single-Pass Feeder
- ◆ Easily access popular cloud applications, including Microsoft® OneDrive® for Business, SharePoint® Online and Google Drive™ with Sharp's Cloud Connect features
- ◆ Compact PDF feature dramatically reduces the file size of scanned color documents, resulting in decreased network traffic and more efficient use of disk and cloud storage
- ◆ 1200 x 1200 dpi printing provides beautiful images and enhanced clarity for fine details such as small text and graphics
- ◆ Scans documents at up to 200 images per minute in both Black and Color
- ◆ Standard high-performance print controller with PCL® 6 and Adobe® PostScript®3™ included
- ◆ Flexible paper handling system feeds up to 110 lb (300 gsm) cover stock and up to 13" x 19" output
- ◆ Standard Job Management features make it easy to print on-demand as well as view jobs, retain jobs, combine jobs, select print settings and more
- ◆ Dimensions 38-3/8" (w) x 30-1/4" (d) x 60-1/4" (h)



MX-8090N shown with optional accessories

MX-7090N / MX-8090N

## Pro Series Digital Color Document System

### MAC Contract #

Model Number	Description
<b>MX-7090N</b>	70 PPM Networked Digital B&W / Color Document System with multi-processing controller, 150 sheet Duplexing Single Pass Feeder, 3,000 Sheet Standard Paper Capacity (tandem sheet drawer - 2,000 sheet capacity / two 500 sheet trays), 1-TB hard disk drive, PCL <sup>®</sup> 6/Adobe <sup>®</sup> Postscript <sup>®</sup> 3 <sup>™</sup> Network Printing, Color Network Scanning, Swing-Out Keyboard, Sharp OSA <sup>®</sup> technology (Cloud-Ready), Application Communication Module, External Accounting Module and Standard Security including End-of-Lease Data Erase feature (3,000 sheets standard paper supply)
<b>MX-8090N</b>	80 PPM Networked Digital B&W / Color Document System with multi-processing controller, 150 sheet Duplexing Single Pass Feeder, 3,000 Sheet Standard Paper Capacity (tandem sheet drawer - 2,000 sheet capacity / two 500 sheet trays), 1-TB hard disk drive, PCL <sup>®</sup> 6/Adobe <sup>®</sup> Postscript <sup>®</sup> 3 <sup>™</sup> Network Printing, Color Network Scanning, Swing-Out Keyboard, Sharp OSA <sup>®</sup> technology (Cloud-Ready), Application Communication Module, External Accounting Module and Standard Security including End-of-Lease Data Erase feature (3,000 sheets standard paper supply)

### Options & Accessories

#### Tray Options (Must Choose 1)

MX-MF10	100 Sheet Multi-Bypass Tray
OR	
MX-LCX3N	3,000 Sheet Large Capacity Cassette (letter / letter-R / legal / ledger) - requires MX-MF10
MX-MF10	100 Sheet Multi-Bypass Tray
OR	
MX-LC12	3,500 Sheet Large Capacity Tray (letter) - requires MX-MF10
MX-MF10	100 Sheet Multi-Bypass Tray
OR	
MX-LC13N	5,000 Sheet Large Capacity Two Drawer Air Feed Tray (letter / letter-R / legal / ledger) - requires MX-RB14
MX-RB14	Paper Pass Unit
MX-MF11	500 Sheet Multi-Bypass Tray - for use with MX-LC13N
OR	
MX-LC13N	5,000 Sheet Large Capacity Two Drawer Air Feed Tray (letter / letter-R / legal / ledger) - requires MX-RB14
MX-LC13N	5,000 Sheet Large Capacity Two Drawer Air Feed Tray (letter / letter-R / legal / ledger) - requires MX-RB14
MX-RB14	Paper Pass Unit
MX-RB17	Large Capacity Tray Connecting Kit (required for 2nd MX-LC13N)
MX-MF11	500 Sheet Multi-Bypass Tray - for use with MX-LC13N
OR	
MX-LT10	Long Paper Feeding Tray (for use with banner paper) - requires MX-MF10
MX-MF10	100 Sheet Multi-Bypass Tray (cannot be used with MX-LC13N/MX-RB14)

#### Exit Tray

MX-TR14	Right Side Exit Tray - requires MX-MF10
---------	---

#### Finishing Options (Must Choose 1)

MX-TU14	Center Exit Tray (required if no finishing option included)
OR	
MX-FN21	100 Sheet Staple Finisher (4,000 sheet output capacity) - requires MX-RB12N and MX-RB15
MX-RB12N	Paper Pass Unit
MX-RB15	Curl Correction Unit

# MX-7090N / MX-8090N

## Pro Series Digital Color Document System

### MAC Contract #

Model Number	Description
Finishing Options (Continued)	
<i>optional accessories for MX-FN21 configuration</i>	
MX-PN13B	Punch Unit - for use with MX-FN21 or MX-FN22
MX-CF11	2 Tray Post Process Page Inserter - requires MX-FD10 or MX-RB13
MX-ST10	5,000 Sheet Stacker (includes 1 MX-CA10 paper cart) - requires MX-RB12N and MX-RB15
MX-RB13	Relay Unit - requires MX-FN21 or MX-FN22, required for MX-CF11 except when configured with MX-FD10
MX-FD10	Multi Folding Unit - requires MX-FN21 or MX-FN22
MX-SL10N	Status Indicator
MX-BM50	Plockmatic Booklet Maker - requires MX-FN21 and MX-PCB50, (MX-XB50 highly recommended)
MX-PCB50	Plockmatic Interface Kit - required for MX-BM50
MX-CF50	Plockmatic Cover Feeder
MX-FD50	Plockmatic Square Folder - requires MX-TM50
MX-TM50	Plockmatic Trimmer
MX-XB50	Plockmatic Rail Unit
OR	
MX-FN22	100 Sheet Staple / Saddle Stitch Finisher (4,000 sheet output capacity) - requires MX-RB12N and MX-RB15
MX-RB12N	Paper Pass Unit
MX-RB15	Curl Correction Unit
<i>optional accessories for MX-FN22 configuration</i>	
MX-PN13B	Punch Unit - for use with MX-FN21 or MX-FN22
MX-CF11	2 Tray Post Process Page Inserter - requires MX-FD10 or MX-RB13
MX-ST10	5,000 Sheet Stacker (includes 1 MX-CA10 paper cart) - requires MX-RB12N and MX-RB15
MX-RB13	Relay Unit - requires MX-FN21 or MX-FN22, required for MX-CF11 except when configured with MX-FD10
MX-FD10	Multi Folding Unit - requires MX-FN21 or MX-FN22
MX-TM10	Trimming Unit - requires MX-FN22
MX-SL10N	Status Indicator
OR	
MX-ST10	5,000 Sheet Stacker (includes 1 MX-CA10 paper cart) - requires MX-RB12N and MX-RB15
MX-RB12N	Paper Pass Unit
MX-RB15	Curl Correction Unit
<i>optional accessories for MX-ST10 high stacking configuration</i>	
MX-CF11	2 Tray Post Process Page Inserter - requires MX-FD10 or MX-RB13
MX-ST10	5,000 Sheet Stacker (includes 1 MX-CA10 paper cart) - requires MX-RB12N and MX-RB15
MX-RB13	Relay Unit - required for MX-CF11 except when configured with MX-FD10
MX-FD10	Multi Folding Unit
MX-CA10	Additional Paper Cart (can be ordered for convenience)
MX-SL10N	Status Indicator
Security Options	
MX-FR58U	Data Security Kit
Print	
MX-PF10	Bar Code Font Kit
AR-SU1	Stamp Unit (requires AR-SV1 Stamp Cartridge)
OR	
MX-PX12	Fiery Interface Kit
MX-PE14	Fiery Embedded Color Print Server (requires the MX-PX12)
MX-PEPP12	Fiery Productivity Pack (Option for MX-PE14 Only)
MX-PEFIS	Fiery Impose Software
MX-PEFC	Fiery Compose Software
MX-PEIC	Fiery Impose + Fiery Compose Software Bundle
MX-PECPS1	Fiery Color Profiler Suite (includes MX-PECPM 1-year SMSA)
MX-PESP	EFI ES-2000 Spectrophotometer
MX-PECPS1	Fiery Color Profiler Suite + EFI ES-2000 Spectrophotometer (includes MX-PECPM 1-year SMSA)

# MX-7090N / MX-8090N

## Pro Series Digital Color Document System

### MAC Contract #

Model Number	Description
Print (Continued)	
MX-PECPM	Fiery Color Profiler Suite Additional 1-year Software Maintenance and Support Agreement (SMSA) (available for MX-PECPS1 or MX-PECPS)
MX-PEJF1	Fiery JobFlow Software (includes MX-PEJFM 1-year SMSA)
MX-PEJFM	Fiery JobFlow 1-year Software Maintenance and Support Agreement (SMSA) (available for MX-PEJF1)
OR	
MX-PX13	Fiery Interface Kit
MX-PE13	Fiery External Color Print Server (requires the MX-PX13)
MX-PEFIS	Fiery Impose Software
MX-PEFC	Fiery Compose Software
MX-PEIC	Fiery Impose + Fiery Compose Software Bundle
MX-PEJM1	Fiery JobMaster Software (includes MX-PEJMM 1-year SMSA)
MX-PEJMM	Fiery JobMaster 1-year Software Maintenance and Support Agreement (SMSA) (available for MX-PEJM1)
MX-PEJ11	Fiery JobMaster + Fiery Impose Software Bundle (includes MX-PEJIM 1-year SMSA)
MX-PEJIM	Fiery JobMaster + Impose 1-year Software Maintenance and Support Agreement (SMSA) (available for MX-PEJ11)
MX-PEGAP	Fiery Graphic Arts Package, Premium Edition Software
MX-PEJF1	Fiery JobFlow Software (includes MX-PEJFM 1-year SMSA)
MX-PEJFM	Fiery JobFlow 1-year Software Maintenance and Support Agreement (SMSA) (available for MX-PEJF1)
MX-PEHD13	Fiery Removable Hard Disk Drive (Option for MX-PE13 Only)
MX-PESP	EFI ES-2000 Spectrophotometer
MX-PECPS1	Fiery Color Profiler Suite (includes MX-PECPM 1-year SMSA)
MX-PECPS1	Fiery Color Profiler Suite + EFI ES-2000 Spectrophotometer (includes MX-PECPM 1-year SMSA)
MX-PECPM	Fiery Color Profiler Suite Additional 1-year Software Maintenance and Support Agreement (SMSA) (available for MX-PECPS1 or MX-PECPS)
MX-PECE1	Fiery Central (includes MX-PECEM 1-year SMSA)
MX-PECEM	Fiery Central 1-year Software Maintenance and Support Agreement (SMSA) (available for MX-PECE1)
MX-PENXLS	Premium Centralized Workstation with 27" monitor, Proximity Sensor
MX-PENXGL	Centralized Workstation with 22" monitor, wireless keyboard and mouse

### GBC Binding

#### Main Unit Components

MX-GBCX2 GBC SmartPunch Pro™ - requires Die Set and MX-RB13

#### GBC Accessories

MX-GBC03	3-Hole Die Set
MX-GBC11	11-Hole VeloBind Set
MX-GBC19	19-Hole CombBind Die Set
MX-GBC21	21-Hole WireBind Die Set
MX-GBC32	32-Hole WireBind Die Set
MX-GBC32PRO	32-Hole ProClick Die Set
MX-GBC44	44-Hole Color Coil Die Set
MX-GBC51	19-Hole CombBind Heavy Duty Die Set
MX-GBC52	44-Hole Color Coil Heavy Duty Die Set
MX-GBC53	3-Hole Heavy Duty Die Set

### Miscellaneous

MX-E524ZNT	Digital 208/230 Volt, 20 Amps Power Surge Protector (Recommended for MX-7090N/8090N main unit)
AR-D5133NT	Digital 120 Volt, 15 Amps, 2 Outlets, Power Surge Protector (Recommended for MX-BM50, MX-FN21, MX-FN22, MX-LC13N and MX-ST10)





**SHARP®**

**B&W Multifunction Copiers & Printers**

Sharp's MX-M2651/M3051/M3551/M4051 Essentials Series monochrome workgroup document systems are built using the latest technology available to deliver the performance, features and reliability needed in today's busy workplace environments. These MFPs are also easy to use and offer enhanced productivity, all to provide customers with a seamless, intuitive experience, and the confidence in knowing their jobs will come out right the first time, every time. The monochrome Essentials Series also offers leading-edge security features to help businesses protect their data and personal information.

Sharp's customizable touchscreen display offers a user-friendly graphical interface with simplified Easy Modes, Integrated user guides and quick access to network services. With Sharp's MFP Voice feature available for these models, you can interact with the machine with the power of natural language. These models have standard full multifunction capability out-of-box, including copying, network printing and color network scanning. Add the optional PostScript Kit to enable the Adobe Embedded Print Engine, which direct prints PDF files with greater performance and rendering accuracy.

These models integrate seamlessly with today's complex network environments, and support popular cloud services and mobile technologies. Sharp's Application Portal enables administrators to easily add new apps or update existing apps right from the MFP.

The MX-M2651, MX-M3051, MX-M3551 and MX-M4051 Monochrome Essentials Series document systems are feature-rich and offer organizations powerful multitasking features at a strong value.

## Features at a glance

- ◆ 26 / 30 / 35 / 40 PPM Black & White Output - **Networked**
- ◆ Paper capacity maximum: 6,300 sheets
  - 650 Standard - One 550 sheet paper drawer and 100 sheet bypass tray
  - Optional Stand with (1) x 550 sheet paper drawer
  - Optional Stand with (2) x 550 sheet paper drawers
  - Optional Stand with (3) x 550 sheet paper drawers
  - Optional Stand with (1) x 550 sheet paper drawer + 2,100 sheet split tandem paper drawers
  - Optional 3,000 sheet large capacity tray
- ◆ 100 sheet reversing single-pass document feeder
- ◆ Flexible paper handling system supports media up to 110 lb cover and up to 12" x 18" through the paper trays
- ◆ Scans documents at up to 80 images per minute
- ◆ Large 10.1" (diagonally measured) customizable touchscreen display with a clean design enables easy access to features and functions when setting up jobs
- ◆ Access popular cloud services, such as Microsoft OneDrive™ for Business, SharePoint® Online, Google Drive™, Dropbox and more with Sharp's available Cloud Connect feature.
- ◆ With the available Optical Character Recognition (OCR) Expansion Kit, you can easily convert documents to popular Microsoft® file formats as well as a variety of PDF formats. You can also add options to Direct Print these same file types from thumb drives, cloud applications and more.
- ◆ Sharp's MFP Voice feature enables users to control the device with simple verbal commands. Experience a hands-free, voice-first interaction powered by Amazon Alexa. (optional hardware required)
- ◆ Network ready PCL® 6 and available Adobe® PostScript® 3™ printing systems ensure your documents print with the clarity and formatting you expect
- ◆ Available wireless networking feature can connect directly to your network or to mobile devices for convenient printing and scanning with the Sharpdesk® Mobile App
- ◆ Available Compact PDF feature dramatically reduces the file size of most color scanned documents, resulting in decreased network traffic and more efficient use of disk and cloud storage
- ◆ 600 x 600 dpi printing provides clear, crisp images and enhanced clarity for fine details such as small text and graphics
- ◆ Dimensions 24" (w) x 26" (d) x 33" (h)  
(Measurements for base model without Stand)



MX-M4051 shown with optional accessories

## MAC Contract #

Model Number	Description
<b>MX-M2651</b>	26 PPM Networked B&W Digital Copier with Quad-Core Multitasking Controller, 500 GB Hard Disk Drive with Document Filing System, PCL®6 Printing System, Network Printing, Network Scanning, 100 Sheet Reversing Single Pass Feeder, Auto Duplexing, 550 Sheet Paper Drawer and 100 Sheet Bypass Tray. Standard Security with End-of-Lease Feature. (650 sheets standard paper supply)
<b>MX-M3051</b>	30 PPM Networked B&W Digital Copier with Quad-Core Multitasking Controller, 500 GB Hard Disk Drive with Document Filing System, PCL®6 Printing Systems, Network Printing, Network Scanning, 100 Sheet Reversing Single Pass Feeder, Auto Duplexing, 550 Sheet Paper Drawer and 100 Sheet Bypass Tray. Standard Security with End-of-Lease Feature. (650 sheets standard paper supply)
<b>MX-M3551</b>	35 PPM Networked B&W Digital Copier with Quad-Core Multitasking Controller, 500 GB Hard Disk Drive with Document Filing System, PCL®6 Printing Systems, Network Printing, Network Scanning, 100 Sheet Reversing Single Pass Feeder, Auto Duplexing, 550 Sheet Paper Drawer and 100 Sheet Bypass Tray. Standard Security with End-of-Lease Feature. (650 sheets standard paper supply)
<b>MX-M4051</b>	40 PPM Networked B&W Digital Copier with Quad-Core Multitasking Controller, 500 GB Hard Disk Drive with Document Filing System, PCL®6 Printing Systems, Network Printing, Network Scanning, 100 Sheet Reversing Single Pass Feeder, Auto Duplexing, 550 Sheet Paper Drawer and 100 Sheet Bypass Tray. Standard Security with End-of-Lease Feature. (650 sheets standard paper supply)

## Options & Accessories

Output Options (Must Choose 1)

MX-TU16	Center Exit Tray Unit
MX-TR20 or	Job Separator (optional, for use with MX-TU16)
MX-FN27N	Inner Finisher
MX-PN14B or	3 Hole Punch Module (for use with MX-FN27N)
MX-FN28	Stacking Finisher - 1,000 Sheets (requires MX-RB25N)
MX-RB25N	Paper Pass Unit
MX-PN15B or	3 Hole Punch Module (for use with MX-FN28 or MX-FN29)
MX-FN29	Saddle Stitch Finisher - 1,000 Sheets (requires MX-RB25N)
MX-RB25N	Paper Pass Unit
MX-PN15B or	3 Hole Punch Module (for use with MX-FN28 or MX-FN29)
MX-FN30	Stacking Finisher - 3,000 Sheets (requires MX-RB25N)
MX-RB25N	Paper Pass Unit
MX-PN16B or	3 Hole Punch Module (for use with MX-FN30 or MX-FN31)
MX-FN31	Saddle Stitch Finisher - 3,000 Sheets (requires MX-RB25N)
MX-RB25N	Paper Pass Unit
MX-PN16B	3 Hole Punch Module (for use with MX-FN30 or MX-FN31)

**MAC Contract #**

<b>Model Number</b>	<b>Description</b>
Paper Tray Options (Must Choose Cabinet or Stand)	
MX-60ABD	Deluxe Copier Cabinet
MX-DE25N	Stand with (1) x 550 Sheet Paper Drawer
MX-DE26N	Stand with (2) x 550 Sheet Paper Drawers
MX-DE27N	Stand with (3) x 550 Sheet Paper Drawers
MX-DE28N	Stand with (1) x 550 + 2,100 Sheet Split Tandem Paper Drawers
MX-DE29N	Low Stand with (1) x 550 Sheet Paper Drawer (for wheelchair access)
MX-LC17N	Large Capacity Tray - 3,000 Sheets (requires MX-DE25N, MX-DE26N, MX-DE27N or MX-DE28N)
MX-LT10	Long Paper Feeding Tray (for use with banner paper)
Exit Tray	
MX-TR19N	Right Side Exit Tray
Security	
MX-FR64U	Data Security Kit
Print	
MX-PK13L	Adobe PS3 Expansion Kit
MX-PF10	Bar Code Font Kit
MX-PU10L	Direct Print Expansion Kit
MX-EB18	Wireless LAN Adaptor
MX-EB19L	Enhanced Compression Kit (Compact PDF)
MX-EB20L	OCR Expansion Kit
AR-SU1	Stamp Unit (requires AR-SV1 Stamp Cartridge)
Sharp OSA®	
MX-AMX2L	OSA Application Communication Module
MX-AMX3L	OSA External Accounting Module
Fax	
MX-FX15	Facsimile Expansion Kit
MX-FWX1L	Internet Fax Kit
Miscellaneous	
AR-D5133NT	Digital 120 Volt, 15 Amps, 2 Outlets, Power Surge Protector
MX-UT10	Utility Table

Sharp's MX-M3071/M3571/M4071 Advanced Series monochrome workgroup document systems are built using the latest technology available to deliver the performance, features and reliability needed in today's busy workplace environments. These MFPs are also easy to use and offer enhanced productivity, all to provide customers with a seamless, intuitive experience, and the confidence in knowing their jobs will come out right the first time, every time. The Monochrome Advanced Series also offers leading-edge security features to help businesses protect their data and personal information.

Sharp's customizable touchscreen display offers a user-friendly graphical interface with simplified Easy Modes, integrated user guides and quick access to network services. With Sharp's MFP Voice feature available for these models, you can interact with the machine with the power of natural language. These models have standard full multifunction capability out-of-box, including copying, network printing and color network scanning. Adobe Embedded Print Engine technology direct prints PDF files from a variety of sources with greater performance and rendering accuracy.

These models integrate seamlessly with today's complex network environments, and support popular cloud services and mobile technologies. Sharp's Application Portal enables administrators to easily add new apps or update existing apps right from the MFP.

The MX-M3071, MX-M3571 and MX-M4071 Monochrome Advanced Series offers organizations powerful multitasking features, enabling them to quickly execute the ever-changing workflow tasks of today's busy office environments.

## Features at a glance

- ◆ 30 / 35 / 40 PPM Black & White Output - **Networked**
- ◆ Paper capacity maximum: 6,300 sheets
  - 650 Standard - One 550 sheet paper drawer and 100 sheet bypass tray
  - Optional Stand with (1) x 550 sheet paper drawer
  - Optional Stand with (2) x 550 sheet paper drawers
  - Optional Stand with (3) x 550 sheet paper drawers
  - Optional Stand with (1) x 550 sheet paper drawer + 2,100 sheet split tandem paper drawers
  - Optional 3,000 sheet large capacity tray
- ◆ Standard 150 sheet duplexing single-pass document feeder
- ◆ Flexible paper handling system supports media up to 110 lb cover and up to 12" x 18" through the paper trays
- ◆ Scans documents at up to 220 images per minute
- ◆ Automatic walk-up motion sensor wakes the machine, and it's ready within seconds
- ◆ Sharp's MFP Voice feature enables users to control the device with simple verbal commands. Experience a hands-free, voice-first interaction powered by Amazon Alexa. (optional hardware required)
- ◆ Large 10.1" (diagonally measured) customizable touchscreen display with a clean design enables easy access to features and functions when setting up jobs
- ◆ Network ready PCL® 6 and Adobe® PostScript® 3™ printing systems ensure your documents print with the clarity and formatting you expect
- ◆ Access popular cloud services, such as Microsoft OneDrive™ for Business, SharePoint® Online, Google Drive™, Dropbox and more with Sharp's available Cloud Connect feature.
- ◆ Standard wireless networking feature can connect directly to your network or to mobile devices for convenient printing and scanning with the Sharpdesk® Mobile App
- ◆ Easily convert documents to popular Microsoft® file formats, as well as a variety of PDF formats, with standard Optical Character Recognition (OCR) capabilities.
- ◆ 1,200 x 1,200 dpi resolution produces razor-sharp documents
- ◆ Dimensions 24" (w) x 26" (d) x 33" (h)  
(Measurements for base model without Stand)



MX-M4071 shown with optional accessories



**MAC Contract #**

<b>Model Number</b>	<b>Description</b>
<b>MX-M3071</b>	30 PPM Networked B&W Digital Copier with Walk-Up Motion Sensor, Wireless Connectivity, Quad-Core Multitasking Controller, Retractable Keyboard, Sharp OSA® Technology (Cloud Ready) - Application Communication and External Accounting Modules, 500 GB Hard Disk Drive with Document Filing System, PCL®6 and Adobe® PostScript® 3™ Printing Systems, Network Printing, Network Scanning, 150 Sheet Duplexing Single Pass Feeder, Auto Duplexing, 550 Sheet Paper Drawer and 100 Sheet Bypass Tray. Standard Security with End-of-Lease Feature. (650 sheets standard paper supply)
<b>MX-M3571</b>	35 PPM Networked B&W Digital Copier with Walk-Up Motion Sensor, Wireless Connectivity, Quad-Core Multitasking Controller, Retractable Keyboard, Sharp OSA® Technology (Cloud Ready) - Application Communication and External Accounting Modules, 500 GB Hard Disk Drive with Document Filing System, PCL®6 and Adobe® PostScript® 3™ Printing Systems, Network Printing, Network Scanning, 150 Sheet Duplexing Single Pass Feeder, Auto Duplexing, 550 Sheet Paper Drawer and 100 Sheet Bypass Tray. Standard Security with End-of-Lease Feature. (650 sheets standard paper supply)
<b>MX-M4071</b>	40 PPM Networked B&W Digital Copier with Walk-Up Motion Sensor, Wireless Connectivity, Quad-Core Multitasking Controller, Retractable Keyboard, Sharp OSA® Technology (Cloud Ready) - Application Communication and External Accounting Modules, 500 GB Hard Disk Drive with Document Filing System, PCL®6 and Adobe® PostScript® 3™ Printing Systems, Network Printing, Network Scanning, 150 Sheet Duplexing Single Pass Feeder, Auto Duplexing, 550 Sheet Paper Drawer and 100 Sheet Bypass Tray. Standard Security with End-of-Lease Feature. (650 sheets standard paper supply)

**Options & Accessories**

## Output Options (Must Choose 1)

MX-TU16	Center Exit Tray Unit
MX-TR20 or	Job Separator (optional, for use with MX-TU16)
MX-FN27N	Inner Finisher
MX-PN14B or	3 Hole Punch Module (for use with MX-FN27N)
MX-FN28	Stacking Finisher - 1,000 Sheets (requires MX-RB25)
MX-RB25N	Paper Pass Unit
MX-PN15B or	3 Hole Punch Module (for use with MX-FN28 or MX-FN29)
MX-FN29	Saddle Stitch Finisher - 1,000 Sheets (requires MX-RB25)
MX-RB25N	Paper Pass Unit
MX-PN15B or	3 Hole Punch Module (for use with MX-FN28 or MX-FN29)
MX-FN30	Stacking Finisher - 3,000 Sheets (requires MX-RB25)
MX-RB25N	Paper Pass Unit
MX-PN16B or	3 Hole Punch Module (for use with MX-FN30 or MX-FN31)
MX-FN31	Saddle Stitch Finisher - 3,000 Sheets (requires MX-RB25)
MX-RB25N	Paper Pass Unit
MX-PN16B	3 Hole Punch Module (for use with MX-FN30 or MX-FN31)



## MX-M3071 / MX-M3571 / MX-M4071 Networked Digital Copier

### MAC Contract #

Model Number	Description
Paper Tray Options (Must Choose Cabinet or Stand)	
MX-60ABD	Deluxe Copier Cabinet
MX-DE25N	Stand with (1) x 550 Sheet Paper Drawer
MX-DE26N	Stand with (2) x 550 Sheet Paper Drawers
MX-DE27N	Stand with (3) x 550 Sheet Paper Drawers
MX-DE28N	Stand with (1) x 550 + 2,100 Sheet Split Tandem Paper Drawers
MX-DE29N	Low Stand with (1) x 550 Sheet Paper Drawer (for wheelchair access)
MX-LC17N	Large Capacity Tray - 3,000 Sheets (requires MX-DE25N, MX-DE26N, MX-DE27N or MX-DE28N)
MX-LT10	Long Paper Feeding Tray (for use with banner paper)
Exit Tray	
MX-TR19N	Right Side Exit Tray
Security	
MX-FR64U	Data Security Kit
Print	
MX-PF10	Bar Code Font Kit
AR-SU1	Stamp Unit (requires AR-SV1 Stamp Cartridge)
Fax	
MX-FX15	Facsimile Expansion Kit
MX-FWX1L	Internet Fax Kit
Miscellaneous	
AR-D5133NT	Digital 120 Volt, 15 Amps, 2 Outlets, Power Surge Protector
MX-UT10	Utility Table



## MX-B376W / MX-B476W Networked Digital A4 Copier

The MX-B376W and MX-B476W Advanced Series desktop monochrome document systems deliver crisp, high-quality output with exceptional ease of use. These models provide customers with an intuitive user experience and the confidence of knowing their jobs will come out right the first time, every time. Designed with high-performance features typically found on larger machines, the compact MX-B376W and MX-B476W deliver the productivity you need with the performance and reliability you want.

Sharp's customizable touchscreen display offers a user-friendly graphical interface with simplified Easy Modes, integrated user guides and quick access to network services. With Sharp's MFP Voice feature available on these models, you can interact with the machine with the power of natural language.

These models offer out-of-the-box copy, print, scan and fax capabilities, plus standard Cloud Connect features combined with wireless networking that enable users to easily manage their workflow from PCs, smart phones and tablets. They integrate seamlessly with today's complex network environments and support popular cloud services and mobile technologies. With Sharp's Application Portal, administrators can easily add or update apps right from the touchscreen panel of the MFP.

The compact MX-B376W and MX-B476W Advanced Series desktop monochrome document systems offer powerful productivity features enabling users to quickly execute workflow tasks in today's busy office environments. And with Sharp's multi-layered leading edge Security Suite, these models can help protect your data and personal information from the first day of operation to the time of trade-in.

### Features at a glance

- ◆ Crisp black-and-white copies at speeds of 37 PPM (MX-B376W) and 47 PPM (MX-B476W)
- ◆ Paper capacity maximum: 2,350 sheets (letter and legal)
  - Standard 500 sheet paper drawer and 50 sheet bypass tray
  - Optional: up to 3 additional 600 sheet paper drawers
- ◆ 50 Sheet Reversing Single Pass Feeder (MX-B376W), 100 Sheet Duplexing Single Pass Feeder (MX-B476W)
- ◆ Both models can feed letter size, legal size, statement size and business card size original documents
- ◆ Customizable Touchscreen display enables easy access to features and functions when setting up jobs
- ◆ Built-in Optical Character Recognition (OCR) function can convert scanned documents to text-searchable PDF format, Microsoft® Office file formats and more
- ◆ Direct print Microsoft Word, PowerPoint® and Excel® files from thumb drives, cloud applications, network folders and more. This function is enabled via Qualcomm® DirectOffice™ technology.
- ◆ Standard Compact PDF feature dramatically reduces the file size of most color scanned documents, resulting in decreased network traffic and more efficient use of disk and cloud storage
- ◆ Sharp's MFP Voice feature enables users to control the device with simple verbal commands. Experience a hands-free, voice-first interaction powered by Amazon Alexa. (optional hardware required)
- ◆ PCL® 6 and Adobe®/Postscript® 3™ network printing
- ◆ Supports popular mobile technologies, enabling users to easily print files from smart phones, tablets and even notebook computers
- ◆ Environmentally-friendly in design, engineering and manufacturing
- ◆ Dimensions 19-3/8" (w) x 20 x-3/8" (d) x 25-1/8" (h)  
(Measurements for base model without Stand)



MX-B476W shown with optional accessories



## MX-B376W / MX-B476W Networked Digital A4 Copier

### MAC Contract #

Model Number	Description
<b>MX-B376W</b>	37 PPM Desktop Monochrome Multi-Function Document System includes multitasking controller, 50 sheet reversing single pass feeder, PCL® 6 and Adobe PostScript® 3™ printing systems, network scanning, auto duplexing, one 500 sheet paper drawer and 50 sheet bypass tray.
<b>MX-B476W</b>	47 PPM Desktop Monochrome Multi-Function Document System includes multitasking controller, 100 sheet duplexing single pass feeder, PCL® 6 and Adobe PostScript® 3™ printing systems, network scanning, auto duplexing, one 500 sheet paper drawer and 50 sheet bypass tray.

### Options & Accessories

#### Output Options

<b>MX-FN32</b>	Inner Finisher
----------------	----------------

#### Tray Options

<b>MX-DS22N</b>	High Stand
<b>MX-DS23N</b>	Low Stand
<b>MX-CS14N</b>	600 sheet Paper Feed Unit

#### Security

<b>MX-FR63U</b>	Data Security Kit
-----------------	-------------------

#### Print

<b>MX-PF10</b>	Bar Code Font Kit
----------------	-------------------

#### Fax

<b>MX-FWX1L</b>	Internet Fax Kit
-----------------	------------------

#### Miscellaneous

<b>AR-D5133NT</b>	Digital 120 Volt, 15 Amps, 2 Outlets, Power Surge Protector
-------------------	---

## MX-B427W Desktop Monochrome Document System

The MX-B427W desktop monochrome document system delivers crisp, high-quality output with exceptional ease of use. This model provides customers with an intuitive user experience and the confidence of knowing their jobs will come out right the first time, every time. Designed with robust technology and energy efficient features, the compact MX-B427W delivers the productivity you need with the performance and reliability you want in your workplace or home office.

### Features at a glance

- ◆ Productive Printing Speeds up to 42 ppm
- ◆ Standard copy, print, scan and fax capability right out-of-the-box
- ◆ Compact design easily fits into small offices or home workspaces in desktop or console configurations
- ◆ 50 sheet duplexing document feeder
- ◆ Offers up to three paper sources with available 900 sheet maximum paper capacity (letter/legal/statement)
- ◆ 2.8" (diagonal) color touchscreen display with user-friendly graphical interface
- ◆ Easily copy both sides of ID, business or credit cards onto one single page
- ◆ Supports popular mobile technologies, enabling users to easily print files from smartphones, tablets and even notebook computers
- ◆ Supports letter, statement and legal size paper through the standard paper drawer or bypass tray as well as envelopes (bypass tray only)
- ◆ 600 x 600 dpi printing delivers clear, crisp images and text page after page
- ◆ Sharp Remote Device Manager (SRDM) allows administrators to have centralized control of the device over the network in order to simplify installation and management
- ◆ Protect your intellectual property: a wide range of security features help to keep your information safe, whether it's in a document, on the device, or over your network
- ◆ Convenient front-facing USB port for easy direct printing of PDF files from a USB drive without having to access a PC
- ◆ Dimensions 16.2" (w) x 14.4" (d) x 13.3" (h)



MX-B427W shown with optional accessories



## MX-B427W Desktop Monochrome Document System

### MAC Contract #

Model Number	Description
<b>MX-B427W</b>	42 PPM Desktop Monochrome Multi-Function Document System includes multitasking controller, 50-sheet DSPF, PCL 6 and PostScript® 3™ compatible printing systems, network scanning, auto duplexing, 1 x 250-sheet paper drawer, 100-sheet bypass tray. Drum and starter toner included (starter toner estimated yield: 3,000 images/cartridge).
Tray Options	
MX-CS26	550 Sheet Paper Drawer
Miscellaneous	
AR-D5133NT	Digital 120 Volt, 15 Amps, 2 Outlets, Maximum Power Surge Protector
Supplies	
MX-B42T	Black Toner Cartridge Estimated 20,000 images @ 5% Image Area/Cartridge
MX-B42DU	Black Drum Estimated Yield - 40,000 Images/Package

## MX-B467F Desktop Monochrome Document System

The MX-B467F desktop monochrome document system delivers crisp, high-quality output with exceptional ease of use. This model provides customers with an intuitive user experience and the confidence of knowing their jobs will come out right the first time, every time. Designed with robust technology and software typically found on full-size workgroup devices, the compact MX-B467F delivers the productivity you need with the performance and reliability you want in your workplace or home office.

### Features at a glance

- ◆ Productive Printing Speeds up to 46 ppm
- ◆ Standard copy, print, scan and fax capability right out-of-the-box
- ◆ Compact design easily fits into small offices or home workspaces in desktop or console configurations
- ◆ 50 sheet duplexing document feeder
- ◆ Offers up to five paper sources with available 2,000 sheet maximum paper capacity (letter/legal/statement)
- ◆ 4.3" (diagonal) color touchscreen with Easy Mode tiles for smooth, tablet-style interaction
- ◆ Easily copy both sides of ID, business or credit cards onto one single page
- ◆ Optional optical character recognition (OCR) allows users to convert a scanned document into a searchable PDF file or editable Word file
- ◆ Supports popular mobile technologies, enabling users to easily print files from smartphones, tablets and even notebook computers
- ◆ Supports letter, legal and statement size paper through the standard paper drawer or bypass tray as well as envelopes (bypass tray only)
- ◆ 1,200 x 1,200 dpi printing delivers clear, crisp images and text page after page
- ◆ Sharp Remote Device Manager (SRDM) allows administrators to have centralized control of the device over the network in order to simplify installation and management
- ◆ Protect your intellectual property: a wide range of security features help to keep your information safe, whether it's in a document, on the device, or over your network
- ◆ Convenient front-facing USB port for easy direct printing of Microsoft® Office files from a USB drive without having to access a PC
- ◆ Dimensions 19.3" (w) x 16.9" (d) x 18.8" (h)



MX-B467F shown with optional accessories



## MX-B467F Desktop Monochrome Document System

### MAC Contract #

Model Number	Description
<b>MX-B467F</b>	46 PPM Desktop Monochrome Multi-Function Document System includes multitasking controller, 50-sheet DSPF, PCL 6 and PostScript® 3™ compatible printing systems, network scanning, auto duplexing, 1 x 250-sheet paper drawer, 100-sheet bypass tray. Drum and starter toner included (starter toner estimated yield: 11,000 images/cartridge).

#### Tray Options

MX-CS27	250 Sheet Paper Drawer
MX-CS28	550 Sheet Paper Drawer

#### Miscellaneous

AR-D5133NT	Digital 120 Volt, 15 Amps, 2 Outlets, Maximum Power Surge Protector
------------	---

#### Supplies

MX-B46T	Black Toner Cartridge Estimated 25,000 images @ 5% Image Area/Cartridge
MX-B46DU	Black Drum Estimated Yield - 50,000 Images/Package

The Sharp MX-M5051 and MX-M6051 Essentials Series monochrome document systems are built using the latest technology available to deliver the performance, features and reliability needed in today's busy workplace environments. These MFPs are also easy to use and offer enhanced productivity, all to provide customers with a seamless, intuitive experience, and the confidence in knowing their jobs will come out right the first time, every time. The Monochrome Essentials Series also offers leading-edge security features to help businesses protect their data and personal information.

Sharp's customizable touchscreen display offers a user-friendly graphical interface with simplified Easy Modes, integrated user guides and quick access to network services. With Sharp's MFP Voice feature available for these models, you can interact with the machine with the power of natural language. These models have standard full multifunction capability out-of-box, including copying, network printing and color network scanning. Add the optional PostScript Kit to enable the Adobe Embedded Print Engine, which direct prints PDF files with greater performance and rendering accuracy.

These models integrate seamlessly with today's complex network environments, and support popular cloud services and mobile technologies. Sharp's Application Portal enables administrators to easily add new apps or update existing apps right from the MFP.

The MX-M5051 and MX-M6051 Monochrome Essentials Series document systems are feature rich and offer organizations powerful multitasking features at a strong value.

## Features at a glance

- ◆ 50 / 60 PPM Black & White Output - **Networked**
- ◆ Paper capacity maximum: 6,300 sheets
  - 650 Standard - One 550 sheet paper drawer and 100 sheet bypass tray
  - Optional Stand with (1) x 550 sheet paper drawer
  - Optional Stand with (2) x 550 sheet paper drawers
  - Optional Stand with (3) x 550 sheet paper drawers
  - Optional Stand with (1) x 550 sheet paper drawer + 2,100 sheet split tandem paper drawers
  - Optional 3,000 sheet large capacity tray
- ◆ 100 sheet reversing single-pass document feeder
- ◆ Flexible paper handling system supports media up to 110 lb cover and up to 12" x 18" through the paper trays
- ◆ Scans documents at up to 80 images per minute
- ◆ Large 10.1" (diagonally measured) customizable touchscreen display with a clean design enables easy access to features and functions when setting up jobs
- ◆ Access popular cloud services, such as Microsoft OneDrive™ for Business, SharePoint® Online, Google Drive™, Dropbox and more with Sharp's available Cloud Connect feature
- ◆ With the available Optical Character Recognition (OCR) Expansion Kit, you can easily convert documents to popular Microsoft® file formats as well as a variety of PDF formats. You can also add options to Direct Print these same file types from thumb drives, cloud applications and more.
- ◆ Sharp's MFP Voice feature enables users to control the device with simple verbal commands. Experience a hands-free, voice-first interaction powered by Amazon Alexa. (optional hardware required)
- ◆ Network ready PCL® 6 and available Adobe® PostScript® 3™ printing systems ensure your documents print with the clarity and formatting you expect
- ◆ Available wireless networking feature can connect directly to your network or to mobile devices for convenient printing and scanning with the Sharpdesk® Mobile App
- ◆ Available Compact PDF feature dramatically reduces the file size of most color scanned documents, resulting in decreased network traffic and more efficient use of disk and cloud storage
- ◆ 600 x 600 dpi printing provides clear, crisp images and enhanced clarity for fine details such as small text and graphics
- ◆ Dimensions 24" (w) x 26" (d) x 33" (h)  
(Measurements for base model without Stand)



MX-M6051 shown with optional accessories





## MX-M5051 / MX-M6051 Networked Digital Copier

### MAC Contract #

Model Number	Description
<b>MX-M5051</b>	50 PPM Networked B&W Digital Copier with Quad-Core Multitasking Controller, 500 GB Hard Disk Drive with Document Filing System, PCL®6 Printing System, Network Printing, Network Scanning, 100 Sheet Reversing Single Pass Feeder, Auto Duplexing, 550 Sheet Paper Drawer and 100 Sheet Bypass Tray. Standard Security with End-of-Lease Feature. (650 sheets standard paper supply)
<b>MX-M6051</b>	60 PPM Networked B&W Digital Copier with Quad-Core Multitasking Controller, 500 GB Hard Disk Drive with Document Filing System, PCL®6 Printing Systems, Network Printing, Network Scanning, 100 Sheet Reversing Single Pass Feeder, Auto Duplexing, 550 Sheet Paper Drawer and 100 Sheet Bypass Tray. Standard Security with End-of-Lease Feature. (650 sheets standard paper supply)

### Options & Accessories

#### Output Options (Must Choose 1)

MX-TU16	Center Exit Tray Unit
MX-TR20 or	Job Separator (optional, for use with MX-TU16)
MX-FN27N	Inner Finisher
MX-PN14B or	3 Hole Punch Module (for use with MX-FN27N)
MX-FN28	Stacking Finisher - 1,000 Sheets (requires MX-RB25N)
MX-RB25N	Paper Pass Unit
MX-PN15B or	3 Hole Punch Module (for use with MX-FN28 or MX-FN29)
MX-FN29	Saddle Stitch Finisher - 1,000 Sheets (requires MX-RB25N)
MX-RB25N	Paper Pass Unit
MX-PN15B or	3 Hole Punch Module (for use with MX-FN28 or MX-FN29)
MX-FN30	Stacking Finisher - 3,000 Sheets (requires MX-RB25N)
MX-RB25N	Paper Pass Unit
MX-PN16B or	3 Hole Punch Module (for use with MX-FN30 or MX-FN31)
MX-FN31	Saddle Stitch Finisher - 3,000 Sheets (requires MX-RB25N)
MX-RB25N	Paper Pass Unit
MX-PN16B	3 Hole Punch Module (for use with MX-FN30 or MX-FN31)

#### Paper Tray Options (Must Choose Cabinet or Stand)

MX-60ABD	Deluxe Copier Cabinet
MX-DE25N	Stand with (1) x 550 Sheet Paper Drawer
MX-DE26N	Stand with (2) x 550 Sheet Paper Drawers
MX-DE27N	Stand with (3) x 550 Sheet Paper Drawers
MX-DE28N	Stand with (1) x 550 + 2,100 Sheet Split Tandem Paper Drawers
MX-DE29N	Low Stand with (1) x 550 Sheet Paper Drawer (for wheelchair access)
MX-LC17N	Large Capacity Tray - 3,000 Sheets (requires MX-DE25N, MX-DE26N, MX-DE27N or MX-DE28N)
MX-LT10	Long Paper Feeding Tray (for use with banner paper)



## MX-M5051 / MX-M6051 Networked Digital Copier

### MAC Contract #

Model Number	Description
Exit Tray	
MX-TR19N	Right Side Exit Tray
Security	
MX-FR64U	Data Security Kit
Print	
MX-PK13L	Adobe PS3 Expansion Kit
MX-PF10	Bar Code Font Kit
MX-PU10L	Direct Print Expansion Kit
MX-EB18	Wireless LAN Adaptor
MX-EB19L	Enhanced Compression Kit (Compact PDF)
MX-EB20L	OCR Expansion Kit
AR-SU1	Stamp Unit (requires AR-SV1 Stamp Cartridge)
Sharp OSA <sup>®</sup>	
MX-AMX2L	OSA Application Communication Module
MX-AMX3L	OSA External Accounting Module
Fax	
MX-FX15	Facsimile Expansion Kit
MX-FWX1L	Internet Fax Kit
Miscellaneous	
AR-D5133NT	Digital 120 Volt, 15 Amps, 2 Outlets, Power Surge Protector
MX-UT10	Utility Table

The Sharp MX-M5071 and MX-M6071 Advanced Series monochrome workgroup document systems are built using the latest technology available to deliver the performance, features and reliability needed in today's busy workplace environments. These MFPs are also easy to use and offer enhanced productivity, all to provide customers with a seamless, intuitive experience, and the confidence in knowing their jobs will come out right the first time, every time. The Monochrome Advanced Series also offers leading-edge security features to help businesses protect their data and personal information.

Sharp's customizable touchscreen display offers a user-friendly graphical interface with simplified Easy Modes, integrated user guides and quick access to network services. With Sharp's MFP Voice feature available for these models, you can interact with the machine with the power of natural language. These models have standard full multifunction capability out-of-box, including copying, network printing and color network scanning. Adobe Embedded Print Engine technology direct prints PDF files from a variety of sources with greater performance and rendering accuracy.

These models integrate seamlessly with today's complex network environments, and support popular cloud services and mobile technologies. Sharp's Application Portal enables administrators to easily add new apps or update existing apps right from the MFP.

The MX-M5071 and MX-M6071 Monochrome Advanced Series offers organizations powerful multitasking features, enabling them to quickly execute the ever-changing workflow tasks of today's busy office environments

## Features at a glance

- ◆ 50 / 60 PPM Black & White Output - **Networked**
- ◆ Paper capacity maximum: 6,300 sheets
  - 650 Standard - One 550 sheet paper drawer and 100 sheet bypass tray
  - Optional Stand with (1) x 550 sheet paper drawer
  - Optional Stand with (2) x 550 sheet paper drawers
  - Optional Stand with (3) x 550 sheet paper drawers
  - Optional Stand with (1) x 550 sheet paper drawer + 2,100 sheet split tandem paper drawers
  - Optional 3,000 sheet large capacity tray
- ◆ Standard 150 sheet duplexing single-pass document feeder
- ◆ Flexible paper handling system supports media up to 110 lb cover and up to 12" x 18" through the paper trays
- ◆ Scans documents at up to 220 images per minute
- ◆ Automatic walk-up motion sensor wakes the machine, and it's ready within seconds
- ◆ Sharp's MFP Voice feature enables users to control the device with simple verbal commands. Experience a hands-free, voice-first interaction powered by Amazon Alexa. (optional hardware required)
- ◆ Large 10.1" (diagonally measured) customizable touchscreen display with a clean design enables easy access to features and functions when setting up jobs
- ◆ Network ready PCL® 6 and Adobe® PostScript® 3™ printing systems ensure your documents print with the clarity and formatting you expect
- ◆ Access popular cloud services, such as Microsoft OneDrive™ for Business, SharePoint® Online, Google Drive™, Dropbox and more with Sharp's available Cloud Connect feature
- ◆ Standard wireless networking feature can connect directly to your network or to mobile devices for convenient printing and scanning with the Sharpdesk® Mobile App
- ◆ Easily convert documents to popular Microsoft® file formats, as well as a variety of PDF formats, with standard Optical Character Recognition (OCR) capabilities.
- ◆ 1,200 x 1,200 dpi resolution produces razor-sharp documents
- ◆ Dimensions 24" (w) x 26" (d) x 33" (h)  
(Measurements for base model without Stand)



MX-M6071 shown with optional accessories



## MX-M5071 / MX-M6071 Networked Digital Copier

### MAC Contract #

Model Number	Description
<b>MX-M5071</b>	50 PPM Networked B&W Digital Copier with Walk-Up Motion Sensor, Wireless Connectivity, Quad-Core Multitasking Controller, Retractable Keyboard, Sharp OSA® Technology (Cloud Ready) - Application Communication and External Accounting Modules, 500 GB Hard Disk Drive with Document Filing System, PCL®6 and Adobe® PostScript® 3™ Printing Systems, Network Printing, Network Scanning, 150 Sheet Duplexing Single Pass Feeder, Auto Duplexing, 550 Sheet Paper Drawer and 100 Sheet Bypass Tray. Standard Security with End-of-Lease Feature. (650 sheets standard paper supply)
<b>MX-M6071</b>	60 PPM Networked B&W Digital Copier with Walk-Up Motion Sensor, Wireless Connectivity, Quad-Core Multitasking Controller, Retractable Keyboard, Sharp OSA® Technology (Cloud Ready) - Application Communication and External Accounting Modules, 500 GB Hard Disk Drive with Document Filing System, PCL®6 and Adobe® PostScript® 3™ Printing Systems, Network Printing, Network Scanning, 150 Sheet Duplexing Single Pass Feeder, Auto Duplexing, 550 Sheet Paper Drawer and 100 Sheet Bypass Tray. Standard Security with End-of-Lease Feature. (650 sheets standard paper supply)

### Options & Accessories

Output Options (Must Choose 1)

MX-TU16	Center Exit Tray Unit
MX-TR20 or	Job Separator (optional, for use with MX-TU16)
MX-FN27N	Inner Finisher
MX-PN14B or	3 Hole Punch Module (for use with MX-FN27)
MX-FN28	Stacking Finisher - 1,000 Sheets (requires MX-RB25N)
MX-RB25N	Paper Pass Unit
MX-PN15B or	3 Hole Punch Module (for use with MX-FN28 or MX-FN29)
MX-FN29	Saddle Stitch Finisher - 1,000 Sheets (requires MX-RB25N)
MX-RB25N	Paper Pass Unit
MX-PN15B or	3 Hole Punch Module (for use with MX-FN28 or MX-FN29)
MX-FN30	Stacking Finisher - 3,000 Sheets (requires MX-RB25N)
MX-RB25N	Paper Pass Unit
MX-PN16B or	3 Hole Punch Module (for use with MX-FN30 or MX-FN31)
MX-FN31	Saddle Stitch Finisher - 3,000 Sheets (requires MX-RB25N)
MX-RB25N	Paper Pass Unit
MX-PN16B	3 Hole Punch Module (for use with MX-FN30 or MX-FN31)



## MX-M5071 / MX-M6071 Networked Digital Copier

### MAC Contract #

Model Number	Description
Paper Tray Options (Must Choose Cabinet or Stand)	
MX-60ABD	Deluxe Copier Cabinet
MX-DE25N	Stand with (1) x 550 Sheet Paper Drawer
MX-DE26N	Stand with (2) x 550 Sheet Paper Drawers
MX-DE27N	Stand with (3) x 550 Sheet Paper Drawers
MX-DE28N	Stand with (1) x 550 + 2,100 Sheet Split Tandem Paper Drawers
MX-DE29N	Low Stand with (1) x 550 Sheet Paper Drawer (for wheelchair access)
MX-LC17N	Large Capacity Tray - 3,000 Sheets (requires MX-DE25N, MX-DE26N, MX-DE27N or MX-DE28N)
MX-LT10	Long Paper Feeding Tray (for use with banner paper)
Exit Tray	
MX-TR19N	Right Side Exit Tray
Security	
MX-FR64U	Data Security Kit
Print	
MX-PF10	Bar Code Font Kit
AR-SU1	Stamp Unit (requires AR-SV1 Stamp Cartridge)
Fax	
MX-FX15	Facsimile Expansion Kit
MX-FWX1L	Internet Fax Kit
Miscellaneous	
AR-D5133NT	Digital 120 Volt, 15 Amps, 2 Outlets, Power Surge Protector
MX-UT10	Utility Table

The MX-B557F desktop monochrome document system produces crisp, high-quality output with exceptional ease of use. This model provides customers with an intuitive user experience and the confidence of knowing their jobs will come out right the first time, every time. Designed with high-performance features typically found on larger machines, the compact MX-B557F delivers the productivity and performance you need in your home office or place of business.

## Features at a glance

- ◆ Productive Printing Speeds up to 55 ppm
- ◆ Standard copy, print, scan and fax capability right out-of-the-box
- ◆ Easily fits into small offices or home workplaces in desktop or console configurations
- ◆ 200 sheet duplexing document feeder scans both sides of a document in a single pass for enhanced productivity
- ◆ Offers up to five paper sources with available 3,300 sheet maximum paper capacity (letter and legal)
- ◆ 10" (diagonal) color touchscreen with adjustable viewing angle offers smooth, tablet-style interaction
- ◆ Built-in optical character recognition (OCR) allows users to convert a scanned document into a searchable PDF file or into an editable Word file
- ◆ Supports popular mobile technologies, enabling users to easily print files from smartphones, tablets and even notebook computers
- ◆ Supports letter and legal size paper as well as envelopes through the standard paper drawer or bypass tray
- ◆ 1,200 x 1,200 dpi resolution produces razor-sharp documents. PostScript® 3™ drivers offer extensive job control
- ◆ Sharp Remote Device Manager (SRDM) allows administrators to have centralized control of the networked MFP in order to simplify installation and management
- ◆ Standard compact PDF feature dramatically reduces the file size of most color scanned documents resulting in decreased network traffic and efficient use of cloud storage
- ◆ Convenient USB port located in the front of the device lets users access the machine quickly when printing direct from a USB drive
- ◆ Dimensions 45.3" (w) x 27" (d) x 27.3" (h)



MX-B557F shown with optional accessories



## MX-B557F Desktop Monochrome Document System

### MAC Contract #

Model Number	Description
<b>MX-B557F</b>	55 PPM Desktop Monochrome Multi-Function Document System includes multitasking controller, 200-sheet DSPF, PCL 6 and PostScript® 3™ printing systems, network scanning, auto duplexing, 2 x 550-sheet paper drawer, 100-sheet bypass tray. Drum and starter toner included (starter toner estimated yield: 11,000 images/cartridge).

#### Output Options

MX-FN38	Staple Finisher
MX-FN39	Staple Finisher with Hole Punch
MX-MS10	4-Bin Mailbox

#### Tray Options

MX-CS22	550 Sheet Paper Drawer
MX-CS24	2,100 Sheet Paper Drawer

#### Miscellaneous

AR-D5133NT	Digital 120 Volt, 15 Amps, 2 Outlets, Maximum Power Surge Protector
------------	---

#### Supplies

MX-B70T	Black Toner Cartridge Estimated 45,000 images @ 5% Image Area/Cartridge
MX-B70DU	Black Drum Estimated Yield - 150,000 Images/Package



## MX-M7570 Networked Digital Copier

The Sharp MX-M7570 high-speed monochrome document system offers crisp, high quality output at speeds up to 75 pages per minute coupled with exceptional ease of use. This model is designed to provide customers with a seamless, intuitive experience, and the confidence in knowing their jobs will come out right the first time, every time. This document system focuses on user operability and draws inspiration from the latest networking and imaging technologies available today, all to create a document system that delivers the productivity you need, with the reliable performance you want.

Sharp's customizable touchscreen display offers a user-friendly graphical interface with a clean design, simplified Easy Modes and integrated operation guides. Equipped with the latest version of Sharp OSA<sup>®</sup> technology for easy integration with network applications and cloud services, this model can unlock advanced capabilities to help you better manage your workflow. An integrated walk-up motion sensor and an easy-to-use graphical interface combine with a fast warm up time to create a workflow experience with virtually no waiting time.

The MX-M7570 monochrome document system offers customers powerful multitasking features enabling them to quickly execute the ever-changing workflow tasks of today's busy office environments. And with Sharp's multi-layered Security Suite, this model can help protect your data and personal information from the first day of operation to the time of trade-in.

---

## Features at a glance

---

- ◆ 75 PPM Black & White Output - **Networked**
- ◆ Paper capacity maximum: 6,700 sheets
  - 3,200 Sheets Standard Paper Capacity - One 1,250 sheet tandem tray, One 850 sheet tandem tray  
Two 500 sheet paper trays and 100 sheet bypass tray
  - Optional 3,000 sheet ledger size large capacity cassette
  - Optional 3,500 sheet letter size large capacity cassette
- ◆ Standard 150 sheet duplexing document feeder
- ◆ Scans documents at up to 200 images per minute
- ◆ Standard security platform includes 256-bit encryption, up to 10-times data overwrite and an End-of-Lease feature that erases all data and personal information at trade-in
- ◆ Automatic walk-up motion sensor wakes the machine, and it's ready within seconds
- ◆ ImageSEND<sup>™</sup> feature provides one-touch distribution to email, network folders, cloud applications and more
- ◆ Large 10.1" (diagonally measured) customizable touchscreen display with a clean design enables easy access to features and functions
- ◆ NFC tag embedded in the bottom right corner of the control panel allows for easy connection via Sharpdesk<sup>®</sup> Mobile for printing and scanning on the go
- ◆ Easily access popular cloud applications, including Microsoft<sup>®</sup> OneDrive<sup>®</sup> for Business, SharePoint<sup>®</sup> Online, and Google Drive<sup>™</sup> with Sharp's Cloud Connect features
- ◆ Direct print Microsoft Word, Powerpoint<sup>®</sup> and Excel<sup>®</sup> files from thumb drives, cloud applications, network folders and more. This function is enabled via DirectOffice<sup>™</sup> technology
- ◆ Built-in Optical Character Recognition (OCR) function can convert scanned documents to text-searchable PDF format, Microsoft Office file formats and others
- ◆ 1,200 x 1,200 dpi resolution produces razor-sharp documents
- ◆ Dimensions 26" (w) x 30-1/2" (d) x 48" (h)  
*(Measurements for base model without Stand)*



MX-M7570 shown with optional accessories



## MX-M7570 Networked Digital Copier

### MAC Contract #

Model Number	Description
<b>MX-M7570</b>	75 PPM B & W <b>Networked</b> Digital Copier with 2,100 sheet tandem tray, 2 x 500 sheet trays, 100 sheet bypass tray, wireless connectivity, multitasking controller, retractable keyboard, Sharp OSA® technology - Application Communication and External Accounting modules, 500 GB hard disk drive with Document Filing System, PCL®6 and Adobe® PostScript® 3™ printing systems, network printing, network scanning, 150-sheet duplexing single pass feeder and auto duplexing, (3,200 sheets total paper supply)

### Options & Accessories

#### Tray Options

MX-LC18	3,500 Sheet Large Capacity Tray (letter)
OR	
MX-LC19	3,000 Sheet Large Capacity Cassette (letter / letter-R / legal / ledger / 12" x 18")
OR	
MX-LT10	Long Paper Feeding Tray (for use with banner paper)

#### Exit Tray

MX-TR21	Right Side Exit Tray
---------	----------------------

#### Finishing Options (Must Choose 1)

MX-TU15	Center Exit Tray
OR	
MX-FN33	Inner Finisher (requires MX-RB24)
MX-RB24	Paper Pass Unit
OR	
MX-FN34	65 Sheet Staple Finisher (3,000 sheet output capacity, requires MX-RB26)
MX-RB26	Paper Pass Unit
MX-PN16B	Punch Unit (optional, not required) - for use with MX-FN34
OR	
MX-FN35	65 Sheet Staple / 20 Sheet Saddle Stitch Finisher (3,000 sheet output capacity, requires MX-RB26)
MX-RB26	Paper Pass Unit
MX-PN16B	Punch Unit (optional, not required) - for use with MX-FN35
OR	
MX-FN21	100 Sheet Staple Finisher (4,000 sheet output capacity, requires MX-RB26 and MX-RB27)
MX-RB26	Paper Pass Unit
MX-RB27	Curl Correction Unit
MX-PN13B	Punch Unit (optional, not required) - for use with MX-FN21
<i>optional accessories for MX-FN21 configuration</i>	
MX-CF11	2 Tray Inserter Unit - requires MX-RB27, requires MX-RB13 or MX-FD10 if connecting directly to an MX-FN21
MX-FD10	Multi Folding Unit - requires MX-FN21
MX-RB13	Relay Unit (cannot be used with MX-FD10)
OR	



## MX-M7570 Networked Digital Copier

### MAC Contract #

Model Number	Description
Finishing Options (Continued)	
MX-FN22	100 Sheet Staple / 20 Sheet Saddle Stitch Finisher (4,000 sheet output capacity, requires MX-RB26 and MX-RB27)
MX-RB26	Paper Pass Unit
MX-RB27	Curl Correction Unit
MX-PN13B	Punch Unit (optional, not required) - for use with MX-FN22
<i>optional accessories for MX-FN22 configuration</i>	
MX-CF11	2 Tray Inserter Unit - requires MX-RB27, requires MX-RB13 or MX-FD10 if connecting directly to an MX-FN22
MX-FD10	Multi Folding Unit - requires MX-FN22
MX-RB13	Relay Unit (cannot be used with MX-FD10)
MX-TM10	Trimming Unit
Security Options	
MX-FR60U	Data Security Kit
Print	
MX-PF10	Bar Code Font Kit
AR-SU1	Stamp Unit (requires AR-SV1 Stamp Cartridge)
Fax	
MX-FWX1L	Internet Fax Expansion Kit
MX-FX15	Fax Expansion Kit
Miscellaneous	
AR-D5133NT	Digital 120 Volt, 15 Amps, 2 Outlets, Power Surge Protector (Recommended for MX-FN21 and MX-FN22)
AR-D5143NT	Digital 120 Volt, 20 Amps, 2 Outlets, Power Surge Protector (Recommended for main unit)

## MX-M905 Networked Monochrome Document System

From walk-up office environments and corporate workgroups, to Central Reprographics Departments (CRDs) and copy rooms, the MX-M905 High-Speed Monochrome Document System offers advanced technology and features that will streamline your document workflow like never before. The MX-M905 has been designed to handle the rigors of high volume environments with the user-friendliness of a workgroup MFP. With an engine speed of 90 ppm, standard networking and flexible configurations, this high volume workhorse is a perfect fit where productivity and reliability are critical and ease of use is essential.

A large 10.1" (diagonally measured) customizable touchscreen display with a clean design enables easy access to features and functions when setting up jobs. With Sharp's micro-fine toner technology combined with 1200 x 1200 dpi print resolution and true Adobe® PostScript®, your organization can produce beautiful images and enhanced clarity for fine details such as small text and graphics. The triple air-feed paper handling option offers high reliability and is virtually maintenance-free.

Built on the latest Sharp OSA® development platform, the MX-M905 makes integration with network applications and cloud services easier than ever. Sharp's industry-leading security platform incorporates standard 256-bit data encryption and overwrite protection to safeguard your business's intellectual property. When it comes time to trade in, a convenient standard End-of-Lease feature can erase all job and user data.

### Features at a glance

- ◆ 90 PPM Black & White Output - **Networked**
- ◆ Paper capacity maximum: 8,500 sheets
  - 3,100 Sheets Standard Paper Capacity - Tandem Sheet Drawer: One 1,200 sheet paper tray, One 800 sheet paper tray, Two 500 sheet paper trays and 100 sheet bypass tray
  - Optional 3,000 sheet letter / letter-R / legal / ledger size large capacity cassette
  - Optional 3,500 sheet letter size large capacity cassette
  - Optional 5,000 sheet letter / letter-R / legal / ledger size large capacity tray (2 drawer)
- ◆ Full-size retractable keyboard allows quick, easy and accurate data entry
- ◆ Advanced finishing options including a multi-folding unit and multi-position staple and saddle finisher selection
- ◆ Supports the latest Sharp OSA® development platform
- ◆ Large 10.1" high resolution touch-screen display with tilt view
- ◆ Award-winning Sharp security platform with standard data encryption, data overwrite protection and data erase
- ◆ Quickly scan both sides of a document at once with the standard 250 Sheet Duplexing Single-Pass Feeder
- ◆ Scan preview feature offers on-the-fly page editing with easy fingertip navigation
- ◆ Fully customizable home screen feature enables users to add custom backgrounds and custom icons for personalization
- ◆ Triple air-feed paper handling option offers high reliability and is virtually maintenance-free
- ◆ 1200 x 1200 dpi printing provides beautiful images and enhanced clarity for fine details such as small text and graphics
- ◆ Scans documents at up to 240 images per minute (Monochrome or Color)
- ◆ Network ready PCL®6/PostScript®3™ printing system
- ◆ Flexible paper handling system feeds up to 110 lb cover stock
- ◆ Dimensions 42-3/4" (w) x 31-1/4" (d) x 48-3/4" (h)



MX-M905 shown with optional accessories



## MX-M905 Networked Monochrome Document System

### MAC Contract #

Model Number	Description
<b>MX-M905</b>	90 PPM Networked B&W Digital Document System with 250 sheet Duplexing Single Pass Feeder, 3,100 Sheet Paper Capacity (tandem sheet drawer - 2,000 sheet capacity / two 500 sheet trays / 100 sheet multi-bypass tray), Wireless Connectivity, 1-TB hard disk drive, PCL6/Adobe® Postscript® 3™ Printing Systems, Network Printing, Network Scanning, Retractable Keyboard, Sharp OSA® technology (Cloud Ready) - Application Communication and External Accounting Modules (3,100 sheets standard paper supply)

### Options & Accessories

#### Tray Options

MX-LCX3N	3,000 Sheet Large Capacity Cassette (letter / letter-R / legal / ledger)
OR	
MX-LC12	3,500 Sheet Large Capacity Tray (letter)
OR	
MX-LC13N	5,000 Sheet Large Capacity Two Drawer Air Feed Tray (letter / letter-R / legal / ledger) - requires MX-RB16
MX-RB16	LCT Mounting Kit
MX-MF11	500 Sheet Multi-Bypass Tray (requires MX-LC13N) - optional, not required

#### Finishing Options (Must Choose 1)

MX-FN24	50 Sheet Staple Finisher (3,000 sheet output capacity)
MX-PNX4B	Punch Unit (optional, not required) - for use with MX-FN24 or MX-FN25
OR	
MX-FN25	50 Sheet Staple / 15 Sheet Saddle Stitch Finisher (2,000 sheet output capacity)
MX-PNX4B	Punch Unit (optional, not required) - for use with MX-FN24 or MX-FN25
OR	
MX-FN21	100 Sheet Staple Finisher (4,000 sheet output capacity) - requires MX-RB18
MX-RB18	Curl Correction Unit
<i>optional accessories for MX-FN21 configuration</i>	
MX-CF11	2 Tray Inserter Unit - requires MX-RB18; requires MX-RB13 or MX-FD10 if connecting directly to an MX-FN21 or MX-FN22; requires an MX-FN21 or MX-FN22 if not connecting directly to a MX-GBCX2
MX-RB13	Relay Unit - required for MX-GBCX2 or if connecting an MX-FN21/FN22 directly to an MX-CF11
MX-FD10	Multi Folding Unit - requires MX-RB18 and MX-FN21 or MX-FN22
MX-SL10N	Status Indicator
MX-PN13B	Punch Unit - for use with MX-FN21 or MX-FN22
OR	
MX-FN22	100 Sheet Staple / 20 Sheet Saddle Stitch Finisher (4,000 sheet output capacity) - requires MX-RB18
MX-RB18	Curl Correction Unit
<i>optional accessories for MX-FN22 configuration</i>	
MX-CF11	2 Tray Inserter Unit - requires MX-RB18; requires MX-RB13 or MX-FD10 if connecting directly to an MX-FN21 or MX-FN22; requires an MX-FN21 or MX-FN22 if not connecting directly to a MX-GBCX2
MX-RB13	Relay Unit - required for MX-GBCX2 or if connecting an MX-FN21/FN22 directly to an MX-CF11
MX-FD10	Multi Folding Unit - requires MX-RB18 and MX-FN21 or MX-FN22
MX-SL10N	Status Indicator
MX-PN13B	Punch Unit - for use with MX-FN21 or MX-FN22
MX-TM10	Trimming Unit



## MX-M905 Networked Monochrome Document System

### MAC Contract #

Model Number	Description
Security Options	
MX-FR54U	Data Security Kit
Print	
MX-PF10	Bar Code Font Kit
MX-EB11	Enhanced Compression Kit (for Scanning)
AR-SU1	Stamp Unit (requires AR-SV1 Stamp Cartridge)
Fax	
MX-FWX1L	Internet Fax Expansion Kit
MX-FX15	Fax Expansion Kit
GBC Binding	
<b>Main Unit Components</b>	
MX-GBCX2	GBC SmartPunch Pro™ - requires MX-RB13
<b>GBC Accessories</b>	
MX-GBC03	3-Hole Die Set
MX-GBC11	11-Hole VeloBind Set
MX-GBC19	19-Hole CombBind Die Set
MX-GBC21	21-Hole WireBind Die Set
MX-GBC32	32-Hole WireBind Die Set
MX-GBC44	44-Hole Color Coil Die Set
MX-GBC32PRO	32-Hole ProClick Die Set
MX-GBC51	19-Hole CombBind Heavy Duty Die Set
MX-GBC52	44-Hole Color Coil Heavy Duty Die Set
MX-GBC53	3-Hole Heavy Duty Die Set
Miscellaneous	
MX-E524ZNT	Digital 208/230 Volt, 20 Amps Power Surge Protector (Recommended for main unit)
AR-D5133NT	Digital 120 Volt, 15 Amps, 2 Outlets, Power Surge Protector (Recommended for MX-FN21, MX-FN22 and MX-LC13N)

The MX-M1055 and MX-M1205 high performance monochrome document systems are the latest additions to the Sharp Pro Series light production lineup. Built on award-winning technology, these models add advanced workflow capabilities with EFI's latest Fiery platform that helps set the bar for the ultimate in efficiency and operation. The new Fiery® Print Server MX-PE11 provides in-plants and Central Reprographics Departments (CRD) with the advanced workflow capabilities they expect.

The MX-M1055 and MX-M1205 offer a large, high-resolution 15.4" color touchscreen display with swing out keyboard and touch pad that streamlines operation and job management. Triple-air paper feed units combined with the Print Engine Paper Catalog (PEPC) offer a wide range of paper types to be utilized with high precision and reliability. The new powerful Fiery Print Server is available for advanced workflows and high productivity. Command WorkStation is fully integrated with the Sharp touchscreen for unmatched control and ease-of-use.

The MX-M1055 and MX-M1205 also support Sharp OSA® technology, which makes integration with network applications and cloud services simple and easy. Sharp's industry-leading security platform incorporates standard 256-bit data encryption and overwrite protection to help safeguard your business's intellectual property. And when it comes time to trade in, a convenient End-of-Lease feature can erase all job data and user data.

## Features at a glance

- ◆ 105 / 120 PPM Black & White Output - **Networked**
- ◆ Paper capacity maximum: 13,500 sheets
  - 3,000 Sheets Standard Paper Capacity - Tandem Sheet Drawer: One 1,200 sheet paper tray, One 800 sheet paper tray and Two 500 sheet paper trays
  - Optional 2 Drawer 2,500 sheet (each drawer) large capacity cassette - letter / legal / ledger / statement / 12" x 18" size
  - Optional 3,500 sheet letter size large capacity cassette
- ◆ Large, high-resolution 15.4" color touchscreen display with swing out keyboard and touch pad
- ◆ Advanced finishing options including a multi-folding unit and multi-position staple and saddle finisher selection
- ◆ Web browser feature allows easy access to web-based information
- ◆ Supports the latest Sharp OSA® development platform
- ◆ Available Fiery® Print Server for advanced workflows and high productivity
- ◆ Award-winning Sharp security platform with standard 256-bit data encryption and up to 7 times data overwrite protection
- ◆ Quickly scan both sides of a document at once with the standard 250 Sheet Duplexing Single-Pass Feeder
- ◆ Scan preview feature offers on-the-fly page editing with easy fingertip navigation
- ◆ Fully customizable home screen feature enables users to add custom backgrounds and custom icons for personalization
- ◆ Triple air-feed paper handling option offers high reliability and is virtually maintenance free
- ◆ 1200 x 1200 dpi printing provides beautiful images and enhanced clarity for fine details such as small text and graphics
- ◆ Scans documents at up to 200 images per minute (Monochrome or Color)
- ◆ Network ready PCL®6 and true Adobe PS®3™ printing system with direct print function and available XPS option
- ◆ Auto Power Management function with Intelligent Monitoring can turn machine on and off based on usage trends
- ◆ Flexible paper handling system feeds up to 110 lb cover stock
- ◆ Dimensions 45" (w) x 30-1/2" (d) x 60-1/4" (h)



MX-M1205 shown with optional accessories





## MX-M1055 / MX-M1205 Networked Digital Duplicator

### MAC Contract #

Model Number	Description
<b>MX-M1055</b>	105 PPM Networked B&W Digital Duplicator with 250 sheet Duplexing Single Pass Feeder, 3,000 Sheet Paper Capacity, 1-TB hard disk drive, PCL6®/Adobe® Postscript® 3™ Network Printing, Color Network Scanning, Web Browser, Swing Out Keyboard, Application Communication Module and External Accounting Module (3,000 sheets total paper supply)
<b>MX-M1205</b>	120 PPM Networked B&W Digital Duplicator with 250 sheet Duplexing Single Pass Feeder, 3,000 Sheet Paper Capacity, 1-TB hard disk drive, PCL6®/Adobe® Postscript® 3™ Network Printing, Color Network Scanning, Web Browser, Swing Out Keyboard, Application Communication Module and External Accounting Module (3,000 sheets total paper supply)

### Options & Accessories

Tray Options (Must Choose 1 Group from List Below)

MX-MFX1	100 Sheet Multi-Bypass Tray
OR	
MX-LC12	3,500 Sheet Large Capacity Tray (letter) - requires MX-MFX1
MX-MFX1	100 Sheet Multi-Bypass Tray
OR	
MX-LC13N	5,000 Sheet Large Capacity Two Drawer Air Feed Tray (letter / legal / ledger / 12" x 18") - requires MX-RB16
MX-RB16	LCT Mounting Kit
MX-MF11	500 Sheet Multi-Bypass Tray (requires MX-LC13N, not compatible with MX-MFX1) - optional, not required
OR	
MX-LC13N	5,000 Sheet Large Capacity Two Drawer Air Feed Tray (letter / legal / ledger / 12" x 18") - requires MX-RB16
MX-LC13N	5,000 Sheet Large Capacity Two Drawer Air Feed Tray (letter / legal / ledger / 12" x 18") - requires MX-RB17
MX-RB16	LCT Mounting Kit
MX-RB17	LCT Tandem Connecting Kit (required for connecting 2 MX-LC13N Large Capacity Trays)
MX-MF11	500 Sheet Multi-Bypass Tray (requires MX-LC13N, not compatible with MX-MFX1) - optional, not required

Finishing Options (Must Choose 1)

MX-FN21	100 Sheet Staple Finisher (4,000 sheet output capacity) - requires MX-RB18
MX-RB18	Curl Correction Unit
<i>optional accessories for MX-FN21 configuration</i>	
MX-CF11	2 Tray Inserter Unit - requires MX-RB18; requires MX-RB13 or MX-FD10 if connecting directly to an MX-FN21 or MX-FN22; requires an MX-FN21 or MX-FN22 if not connecting directly to a MX-ST10 or MX-GBCX2
MX-ST10	5,000 Sheet Stacker (includes 1 MX-CA10 paper cart) - requires MX-RB18
MX-ST10	5,000 Sheet Stacker (includes 1 MX-CA10 paper cart) - 2nd stacker and 2 MX-LC13Ns required for unattended 10,000 sheet output - requires MX-RB18
MX-CA10	Additional Paper Cart (can be ordered for convenience)
MX-RB13	Relay Unit - required for MX-GBCX2 or if connecting an MX-FN21/FN22 directly to an MX-CF11
MX-FD10	Multi Folding Unit - requires MX-RB18 and MX-FN21 or MX-FN22
MX-SL10N	Status Indicator
MX-PN13B	Punch Unit - for use with MX-FN21 or MX-FN22
MX-BM50	Plockmatic Booklet Maker - requires MX-FN21 and MX-PCB50, (MX-XB50 highly recommended)
MX-PCB50	Plockmatic Interface Kit - required for MX-BM50
MX-CF50	Plockmatic Cover Feeder
MX-FD50	Plockmatic Square Folder - requires MX-TM50
MX-TM50	Plockmatic Trimmer
MX-XB50	Plockmatic Rail Unit
OR	

## MAC Contract #

Model Number	Description
Finishing Options (Continued)	
MX-FN22	100 Sheet Staple / 20 Sheet Saddle Stitch Finisher (4,000 sheet output capacity) - requires MX-RB18
MX-RB18	Curl Correction Unit
<i>optional accessories for MX-FN22 configuration</i>	
MX-CF11	2 Tray Inserter Unit - requires MX-RB18; requires MX-RB13 or MX-FD10 if connecting directly to an MX-FN21 or MX-FN22; requires an MX-FN21 or MX-FN22 if not connecting directly to a MX-ST10 or MX-GBCX2
MX-ST10	5,000 Sheet Stacker (includes 1 MX-CA10 paper cart) - requires MX-RB18
MX-ST10	5,000 Sheet Stacker (includes 1 MX-CA10 paper cart) - 2nd stacker and 2 MX-LC13Ns required for unattended 10,000 sheet output - requires MX-RB18
MX-CA10	Additional Paper Cart (can be ordered for convenience)
MX-RB13	Relay Unit - required for MX-GBCX2 or if connecting an MX-FN21/FN22 directly to an MX-CF11
MX-FD10	Multi Folding Unit - requires MX-RB18 and MX-FN21 or MX-FN22
MX-SL10N	Status Indicator
MX-PN13B	Punch Unit - for use with MX-FN21 or MX-FN22
MX-TM10	Trimming Unit
Security Options	
MX-FR53U	Commercial Data Security Kit
Print	
MX-PUX1L	XPS Expansion Kit
MX-PF10	Bar Code Font Kit
MX-EB11	Enhanced Compression Kit (for Scanning)
AR-SU1	Stamp Unit (requires AR-SV1 Stamp Cartridge)
OR	
MX-PX11	Fiery Interface Kit (requires MX-PE11)
MX-PE11	Fiery Print Server (requires MX-PX11)
MX-PEIVB	Fiery Image Viewer for Black and White Software
MX-PEHD11	EFI Removable Hard Disk Drive Kit for MX-PE11
MX-PEFIS	Fiery Impose Software
MX-PEFC	Fiery Compose Software
MX-PEIC	Fiery Impose + Fiery Compose Software Bundle
MX-PEJM1	Fiery JobMaster Software (includes MX-PEJMM 1-year SMSA)
MX-PEJMM	Fiery JobMaster 1-year Software Maintenance and Support Agreement (SMSA) (available for MX-PEJM1)
MX-PEJI1	Fiery JobMaster + Fiery Impose Software Bundle (includes MX-PEJIM 1-year SMSA)
MX-PEJIM	Fiery JobMaster + Impose 1-year Software Maintenance and Support Agreement (SMSA) (available for MX-PEJI1)
MX-PEJF1	Fiery JobFlow Software (includes MX-PEJFM 1-year SMSA)
MX-PEJFM	Fiery JobFlow 1-year Software Maintenance and Support Agreement (SMSA) (available for MX-PEJF1)
MX-PESP	EFI ES-2000 Spectrophotometer
MX-PECE1	Fiery Central (includes MX-PECEM 1-year SMSA)
MX-PECEM	Fiery Central 1-year Software Maintenance and Support Agreement (SMSA) (available for MX-PECE1)
MX-EB11	Enhanced Compression Kit (for Scanning)
AR-SU1	Stamp Unit (requires AR-SV1 Stamp Cartridge)



## MX-M1055 / MX-M1205 Networked Digital Duplicator

### MAC Contract #

Model Number	Description
GBC Binding	
<b>Main Unit Components</b>	
MX-GBCX2	GBC SmartPunch Pro™ - requires MX-RB13
<b>GBC Accessories</b>	
MX-GBC03	3-Hole Die Set
MX-GBC11	11-Hole VeloBind Set
MX-GBC19	19-Hole CombBind Die Set
MX-GBC21	21-Hole WireBind Die Set
MX-GBC32	32-Hole WireBind Die Set
MX-GBC44	44-Hole Color Coil Die Set
MX-GBC32PRO	32-Hole ProClick Die Set
MX-GBC51	19-Hole CombBind Heavy Duty Die Set
MX-GBC52	44-Hole Color Coil Heavy Duty Die Set
MX-GBC53	3-Hole Heavy Duty Die Set
Miscellaneous	
MX-E524ZNT	Digital 208/230 Volt, 20 Amps Power Surge Protector (Recommended for MX-M1055/M1205 main unit)
AR-D5133NT	Digital 120 Volt, 15 Amps, 2 Outlets, Power Surge Protector (Recommended for MX-BM50, MX-FN21, MX-FN22, MX-LC13N and MX-ST10)



# **SHARP®**

## **Desktop Printers**

## MX-C300P Desktop Color Printer

The compact MX-C300P desktop printer delivers high quality output and reliable performance for busy offices and workgroups. The 30 page per minute MX-C300P is a powerful desktop color printer that can enhance the document output of any size office. Built with Sharp's latest technology, the MX-C300P fits into tight spaces and offers advanced features to help users get their work done quickly.

The MX-C300P offers high quality color output for all types of business documents with Sharp's micro-fine toner technology. Flexible connectivity supports both wired and wireless network environments, as well as USB direct printing from the machine front panel. The Sharpdesk® Mobile app offers convenient wireless printing from mobile devices, such as iPad®, iPhone®, Android™, Windows® Devices. Compact and well designed, the MX-C300P is an affordable color printer for virtually any size office or workgroup.

### Features at a glance

- ◆ Productive printing speeds up to 30 PPM
- ◆ Paper capacity maximum: 800 sheets (letter and legal)
  - Standard 250 sheet paper drawer and 50 sheet bypass tray
  - Optional: 500 sheet paper drawer
- ◆ PCL®6 / Postscript® 3™ compatibility printing for both PC and Mac printing environments
- ◆ Dual-Component development system and Sharp's micro-fine toner technology helps produce high quality output
- ◆ Standard Auto Duplex Printing
- ◆ Standard secure wireless networking
- ◆ Sharpdesk Mobile app enables printing from mobile devices
- ◆ Compact Design: easily fits into small office environments
- ◆ High Quality 600 x 600 dpi printing
- ◆ Easy-to-use 5-line LCD operation panel
- ◆ Front USB port for easy direct printing of PDF files from memory devices
- ◆ Account control for up to 30 users
- ◆ Dimensions 17" x 20" x 13 1/4"



MX-C300P shown with optional accessories



## DX-B351PL Desktop Monochrome Printer

The Sharp DX-B351PL Essentials Series Monochrome Printer delivers an output speed of up to 35 pages per minute with proven durability and a low cost of operation. The DX-B351PL also provides a compact footprint combined with secure network printing, making it a great choice for confidential printing in executive offices, human resource departments and restricted areas of the workplace. Developed with the business user in mind, the DX-B351PL offers a low cost-per-page which helps keep office expenses under control.

### Features at a glance

- ◆ Productive Printing Speeds up to 35 ppm (letter and legal)
- ◆ Easy-to-use two-line LCD operational panel
- ◆ Simple and convenient one step installation process
- ◆ Automatic two-sided function for duplex printing
- ◆ Compact design easily fits into small office spaces in desktop or workgroup environments
- ◆ 1,200 x 1,200 dpi printing delivers clear, crisp images and text page after page
- ◆ Front facing bypass tray for easy printing of envelopes, labels and specialty media
- ◆ PCL® 6 and Adobe® Postscript® Printing
- ◆ Silent mode creates less noise and helps maintain a comfortable environment
- ◆ Dimensions 14" (w) x 13" (d) x 9" (h)





## DX-B351PL Desktop Monochrome Printer

### MAC Contract #

Model Number	Description
<b>DX-B351PL</b>	35 PPM Desktop Monochrome Printer includes 2 Line LCD operation panel, wired connectivity, PCL® 6 and Adobe® PostScript® printing systems, auto duplexing, 1 x 250-sheet paper drawer, 1-sheet bypass tray. Drum and starter toner included (starter toner estimated yield: 1,500 images/cartridge).

### Options & Accessories

#### Supplies

DX-B35TB	Black Toner Cartridge Estimated 3,000 images @ 5% Image Area/Cartridge
DX-B35DU	Drum 12K black images



The Sharp DX-B352P desktop monochrome printer delivers output speeds of up to 35 pages per minute with advanced durability to ensure years of reliable and carefree operation. Offering both wired and wireless network connectivity, along with a compact footprint, this printer can adapt to any busy office or home environment. The DX-B352P even makes changing supplies easy. Utilizing a single cartridge supply system, users can quickly change all key components by simply replacing one cartridge.



### Features at a glance

- ◆ Productive Printing Speeds up to 35 ppm (letter and legal)
- ◆ Triple your printing with optional paper drawer, 1,410-sheet maximum paper capacity
- ◆ Automatic two-sided function for duplex printing
- ◆ 1,200 x 1,200 dpi printing delivers clear, crisp images and text page after page
- ◆ PCL® 6 and Adobe® Postscript® 3 Printing
- ◆ Compact design easily fits into small office spaces
- ◆ Standard wireless network connectivity
- ◆ Single toner and drum supply component
- ◆ Easily print documents from mobile devices
- ◆ Auto-sleep mode creates less noise pollution and gives peace of mind
- ◆ Dimensions 14-2/3" (w) x 11-1/3" (h)



DX-B352P shown with optional accessories



## DX-B352P Desktop Monochrome Printer

### MAC Contract #

Model Number	Description	Contract
<b>DX-B352P</b>	35 PPM Desktop Monochrome Printer includes 2 Line LCD operation panel, wireless and wired connectivity, PCL® 6 and Adobe® PostScript® 3™ printing systems, auto duplexing, 1 x 250-sheet paper drawer, 60-sheet bypass tray. Starter combo. drum and toner unit included (starter unit estimated yield: 3,000 images/cartridge).	

### Options & Accessories

Tray Options		
DX-CS11	550 Sheet Paper Drawer	
Supplies		
DX-B35TD	Black Toner and Drum Cartridge Estimated 6,000 images @ 5% Image Area/Cartridge	

The MX-C407P desktop color printer delivers crisp, high-quality output with exceptional ease of use. This compact printer provides customers with an intuitive user experience and the confidence of knowing their jobs will come out right the first time, every time. Packed with robust technology and features typically found on multifunction printers, the MX-C407P will give customers the confidence to print any size job from their workplace or home office.

### Features at a glance

- ◆ Productive Printing Speeds up to 40 ppm
- ◆ Compact design easily fits into small spaces in desktop or console configurations
- ◆ Offers up to four paper sources with available 1,451 sheet maximum paper capacity (letter and legal)
- ◆ Intuitive 4.3" (diagonal) touchscreen offers print preview menu to ensure your documents are printed with precision
- ◆ Supports popular mobile technologies, enabling users to easily print files from smartphones, tablets and even notebook computers
- ◆ Supports letter and legal size paper as well as envelopes and labels through the standard paper drawer and bypass tray
- ◆ 1,200 x 1,200 dpi resolution produces razor sharp documents
- ◆ 1 sheet bypass tray for envelopes, labels and specialty media
- ◆ PCL® 6 and Postscript® 3™ compatible printing
- ◆ Convenient front-facing USB port provides easy access for direct printing from flash drives and thumb drives
- ◆ Dimensions 17.4" (w) x 16.6" (d) x 12.1" (h)



MX-C407P shown with optional accessories



## MX-C407P Desktop Color Printer

### MAC Contract #

Model Number	Description
<b>MX-C407P</b>	40 PPM Desktop Color Printer includes multitasking controller, PCL® 6 and PostScript® 3™ printing systems, auto duplexing, 1 x 250-sheet paper drawer, 1-sheet bypass tray. Drum, developer and starter toner included (starter toner estimated yield: 3,000 images/cartridge color/ 2,000 images/cartridge black).

### Options & Accessories

#### Tray Options

MX-CS18	550 Sheet Paper Drawer
MX-CS20	650 Sheet Dual Paper Feed Unit

#### Miscellaneous

AR-D5133NT	Digital 120 Volt, 15 Amps, 2 Outlets, Maximum Power Surge Protector
------------	---

#### Supplies

MX-C35TB	Black Toner Cartridge Estimated 9,000 images @ 5% Image Area/Cartridge
MX-C35TC	Cyan Toner Cartridge Estimated 6,000 images @ 5% Image Area/Cartridge
MX-C35TM	Magenta Toner Cartridge Estimated 6,000 images @ 5% Image Area/Cartridge
MX-C35TY	Yellow Toner Cartridge Estimated 6,000 images @ 5% Image Area/Cartridge
MX-C35DU-B	Black Imaging Kit (includes drum/developer) Estimated Yield - 125,000 Images/Package
MX-C35DU-S	Black and Color Imaging Kit (includes drum/developer) Estimated Yield - 125,000 Images/Package

## MX-B427PW Desktop Monochrome Printer

The MX-B427PW desktop monochrome printer delivers crisp, high-quality output with exceptional ease of use. This ultra-compact printer provides customers with a simplified user experience and the confidence of knowing their jobs will come out right the first time, every time. The MX-B427PW is equipped with economical features that reduce energy consumption both while in use and during sleep mode. Offering versatile paper handling and wireless capability right out of the box, the MX-B427PW is the perfect solution for the workplace or home office.

### Features at a glance

- ◆ Productive Printing Speeds up to 42 ppm
- ◆ Easy-to-use 2-line LCD operation panel
- ◆ Compact design easily fits into small spaces in desktop or console configurations
- ◆ Standard automatic two-sided printing
- ◆ Offers up to three paper sources with available 900 sheet maximum paper capacity
- ◆ Supports popular mobile technologies, enabling users to easily print files from smartphones, tablets and notebook computers
- ◆ Supports letter and legal size paper through the standard paper drawer and bypass tray as well as envelopes (bypass tray only)
- ◆ Sharp Remote Device Manager\* (SRDM) allows administrators to have centralized control of their networked printers in order to simplify installation and management
- ◆ 600 x 600 dpi printing delivers clear, crisp images and text page after page
- ◆ 100 sheet bypass tray for envelopes, heavy paper and specialty media
- ◆ Standard PCL® 6 and Postscript® 3™ compatible printing capability
- ◆ Dimensions 14.5" (w) x 14.3" (d) x 8.7" (h)



MX-B427PW shown with optional accessories

\*Some SRDM features are not available. Contact your Sharp representative for availability and details.



## MX-B427PW Desktop Monochrome Printer

### MAC Contract #

Model Number	Description
<b>MX-B427PW</b>	42 PPM Desktop Monochrome Printer includes 2-line LCD control panel, PCL® 6 and PostScript® 3™ compatible printing systems, auto duplexing, 1 x 250-sheet paper drawer, 100-sheet bypass tray. Drum and starter toner included (starter toner estimated yield: 3,000 images/cartridge).

### Options & Accessories

#### Tray Options

MX-CS26	550 Sheet Paper Drawer
---------	------------------------

#### Miscellaneous

AR-D5133NT	Digital 120 Volt, 15 Amps, 2 Outlets, Maximum Power Surge Protector
------------	---

#### Supplies

MX-B42T	Black Toner Cartridge Estimated 20,000 images @ 5% Image Area/Cartridge
MX-B42DU	Black Drum Estimated Yield - 40,000 Images/Package

## MX-B467P Desktop Monochrome Printer

The MX-B467P desktop monochrome printer delivers crisp, high-quality output with exceptional ease of use. This compact printer provides customers with an intuitive user experience and the confidence of knowing their jobs will come out right the first time, every time. Equipped with robust technology and economical features that reduce energy consumption both while in use and during sleep mode, the MX-B467P is the perfect size solution for the workplace or home office.

### Features at a glance

- ◆ Productive Printing Speeds up to 46 ppm
- ◆ 2.4" (diagonal) color LCD panel with keypad for easy configuration of printer settings
- ◆ Compact design easily fits into small spaces in desktop or console configurations
- ◆ Standard automatic two-sided printing
- ◆ Offers up to five paper sources with available 2,000 sheet maximum paper capacity
- ◆ Supports popular mobile technologies, enabling users to easily print files from smartphones, tablets and notebook computers
- ◆ Supports letter and legal size paper through the standard paper drawer and bypass tray as well as envelopes (bypass tray only)
- ◆ Sharp Remote Device Manager\* (SRDM) allows administrators to have centralized control of their networked printers in order to simplify installation and management
- ◆ Direct printing of TIFF, JPEG, PDF, or XPS files without using the printer driver
- ◆ 1,200 x 1,200 dpi printing delivers clear, crisp images and text page after page
- ◆ 100 sheet bypass tray for envelopes, heavy paper and specialty media
- ◆ Standard PCL® 6 and Postscript® 3™ compatible printing capability
- ◆ Dimensions 15.7" (w) x 14.7" (d) x 10.2" (h)



MX-B467P shown with optional accessories

\*Some SRDM features are not available. Contact your Sharp representative for availability and details.





## MX-B467P Desktop Monochrome Printer

### MAC Contract #

Model Number	Description
<b>MX-B467P</b>	46 PPM Desktop Monochrome Printer includes 2.4-inch control panel, PCL® 6 and PostScript® 3™ compatible printing systems, auto duplexing, 1 x 250-sheet paper drawer, 100-sheet bypass tray. Drum and starter toner included (starter toner estimated yield: 11,000 images/cartridge).

### Options & Accessories

#### Tray Options

MX-CS27	250 Sheet Paper Drawer
MX-CS28	550 Sheet Paper Drawer

#### Miscellaneous

AR-D5133NT	Digital 120 Volt, 15 Amps, 2 Outlets, Maximum Power Surge Protector
------------	---

#### Supplies

MX-B46T	Black Toner Cartridge Estimated 25,000 images @ 5% Image Area/Cartridge
MX-B46DU	Black Drum Estimated Yield - 50,000 Images/Package

The MX-C507P desktop color printer delivers crisp, high-quality output with exceptional ease of use. This compact printer provides customers with an intuitive user experience and the confidence of knowing their jobs will come out right the first time, every time. Packed with robust technology and features typically found on multifunction printers, the MX-C507P will give customers the confidence to print any size job from their workplace or home office.

### Features at a glance

- ◆ Productive Printing Speeds up to 50 ppm
- ◆ Compact design easily fits into small spaces in desktop or console configurations
- ◆ Offers up to five paper sources with available 2,300 sheet maximum paper capacity (letter and legal)
- ◆ Intuitive 4.3" (diagonal) touchscreen offers print preview menu to ensure your documents are printed with precision
- ◆ Supports popular mobile technologies, enabling users to easily print files from smartphones, tablets and even notebook computers
- ◆ Supports letter and legal size paper as well as envelopes and labels through the standard paper drawer and bypass tray
- ◆ 1,200 x 1,200 dpi resolution produces razor sharp documents
- ◆ 100 sheet bypass tray for envelopes, labels and specialty media
- ◆ Standard PCL® 6 and Postscript® 3™ compatible printing delivers clear, crisp professional output
- ◆ Convenient front-facing USB port provides easy access for direct printing from flash drives and thumb drives
- ◆ Dimensions 18.7" (w) x 19.5" (d) x 16.4" (h)



MX-C507P shown with optional accessories

**MAC Contract #**

<b>Model Number</b>	<b>Description</b>
<b>MX-C507P</b>	50 PPM Desktop Color Printer includes multitasking controller, PCL® 6 and PostScript® 3™ printing systems, auto duplexing, 1 x 550-sheet paper drawer, 100-sheet bypass tray. Drum, developer and starter toner included (starter toner estimated yield: 7,000 images/cartridge).

**Options & Accessories**

## Tray Options

<b>MX-CS17</b>	550 Sheet Paper Drawer
----------------	------------------------

## Miscellaneous

<b>AR-D5133NT</b>	Digital 120 Volt, 15 Amps, 2 Outlets, Maximum Power Surge Protector
-------------------	---

## Supplies

<b>MX-C51TB</b>	Black Toner Cartridge Estimated 16,000 images @ 5% Image Area/Cartridge
<b>MX-C51TC</b>	Cyan Toner Cartridge Estimated 10,000 images @ 5% Image Area/Cartridge
<b>MX-C51TM</b>	Magenta Toner Cartridge Estimated 10,000 images @ 5% Image Area/Cartridge
<b>MX-C51TY</b>	Yellow Toner Cartridge Estimated 10,000 images @ 5% Image Area/Cartridge
<b>MX-C50DU-B</b>	Black Imaging Kit (includes drum/developer) Estimated Yield - 150,000 Images/Package
<b>MX-C50DU-S</b>	Cyan/Magenta/Yellow Imaging Kit (includes drum/developer) Estimated Yield - 150,000 Images/Package

## MX-C607P Desktop Color Printer

The MX-C607P desktop color printer delivers crisp, high-quality output with exceptional ease of use. This compact printer provides customers with an intuitive user experience and the confidence of knowing their jobs will come out right the first time, every time. Packed with robust technology and features typically found on multifunction printers, the MX-C607P will give customers the confidence to print any size job from their workplace or home office.

### Features at a glance



- ◆ Productive Printing Speeds up to 60 ppm
- ◆ Compact design easily fits into small spaces in desktop or console configurations
- ◆ Offers up to six paper sources with available 4,500 sheet maximum paper capacity (letter and legal)
- ◆ Intuitive 4.3" (diagonal) touchscreen offers print preview menu to ensure your documents are printed with precision
- ◆ Supports popular mobile technologies, enabling users to easily print files from smartphones, tablets and even notebook computers
- ◆ Supports letter and legal size paper as well as labels through the standard paper and envelopes through the bypass tray
- ◆ Optional finisher offers up to 300 sheet stapling for more functionality
- ◆ 1,200 x 1,200 dpi resolution produces razor sharp documents
- ◆ 100 sheet bypass tray for envelopes, labels and specialty media
- ◆ Standard PCL® 6 and Postscript® 3™ compatible printing delivers clear, crisp professional output
- ◆ Convenient front-facing USB port provides easy access for direct printing from flash drives and thumb drives
- ◆ Dimensions 22" (w) x 20.6" (d) x 21.12" (h)



MX-C607P shown with optional accessories

## MX-C607P Desktop Color Printer

## MAC Contract #

Model Number	Description
<b>MX-C607P</b>	60 PPM Desktop Color Printer includes multitasking controller, PCL® 6 and PostScript® 3™ printing systems, auto duplexing, 1 x 550-sheet paper drawer, 100-sheet bypass tray. Drum, developer and starter toner included (starter toner estimated yield: 8,000 images/cartridge).

## Options &amp; Accessories

## Output Options

MX-FN37	Staple Finisher
---------	-----------------

## Tray Options

MX-CS16	550 Sheet Paper Drawer
MX-CS19	2,200 Sheet Paper Drawer

## Miscellaneous

AR-D5133NT	Digital 120 Volt, 15 Amps, 2 Outlets, Maximum Power Surge Protector
------------	---

## Supplies

MX-C55TB	Black Toner Cartridge Estimated 25,000 images @ 5% Image Area/Cartridge
MX-C55TC	Cyan Toner Cartridge Estimated 20,000 images @ 5% Image Area/Cartridge
MX-C55TM	Magenta Toner Cartridge Estimated 20,000 images @ 5% Image Area/Cartridge
MX-C55TY	Yellow Toner Cartridge Estimated 20,000 images @ 5% Image Area/Cartridge
MX-C60DU-B	Black Drum Estimated Yield - 175,000 Images/Package
MX-C60DU-S	Color Drum Estimated Yield - 175,000 Images/Package
MX-C60DV-B	Black Developer Estimated Yield - 300,000 Images/Package
MX-C60DV-S	Cyna/Magenta/Yellow Developer Estimated Yield - 300,000 Images/Package

The MX-B557P and MX-B707P monochrome desktop printers deliver crisp, high-quality output with exceptional ease of use. These printers provide users with an intuitive touchscreen and advanced durability to ensure years of reliable and carefree operation. Packed with high-performance features and finishing typically found on multifunction printers, the MX-B557P and MX-B707P will give customers the confidence to print any size job from their workplace or home office.

## Features at a glance

- ◆ Productive Printing Speeds up to 55 ppm (MX-B557P) and 70 ppm (MX-B707P)
- ◆ Offers up to five paper sources with available 4,400 sheet maximum paper capacity (letter and legal)
- ◆ Intuitive 4.3" (diagonal) touchscreen offers print preview menu to ensure your documents are printed with precision
- ◆ Supports popular mobile technologies, enabling users to easily print files from smartphones, tablets and even notebook computers
- ◆ Supports letter and legal size paper as well as envelopes through the standard paper drawer and bypass tray
- ◆ Optional finisher offers up to 500 sheet stapling and available hole punching
- ◆ 1,200 x 1,200 dpi resolution produces razor sharp output
- ◆ 100 sheet bypass tray for envelopes, labels and specialty media
- ◆ Standard PCL® 6 and Postscript® 3™ printing capability
- ◆ Convenient front-facing USB port provides easy access for direct printing from flash drives and thumb drives
- ◆ Dimensions 19-1/4" (w) x 20-3/8" (d) x 17-5/16" (h)



MX-707P shown with optional accessories

## MAC Contract #

Model Number	Description
<b>MX-B557P</b>	55 PPM Desktop Monochrome Printer includes multitasking controller, PCL® 6 and PostScript® 3™ printing systems, auto duplexing, 1 x 550-sheet paper drawer, 100-sheet bypass tray. Drum and starter toner included (starter toner estimated yield: 11,000 images/cartridge).
<b>MX-B707P</b>	70 PPM Desktop Monochrome Printer includes multitasking controller, PCL® 6 and PostScript® 3™ printing systems, auto duplexing, 1 x 550-sheet paper drawer, 100-sheet bypass tray. Drum and starter toner included (starter toner estimated yield: 11,000 images/cartridge).

## Options & Accessories

### Output Options

MX-FN38	Staple Finisher
MX-FN39	Staple Finisher with Hole Punch
MX-MS10	4-Bin Mailbox for use with MX-FN38 (cannot be used with MX-TR22 or MX-TR23)
MX-TR22	Output Expander (requires MX-TR23)
MX-TR23	High Capacity Output Expander (requires MX-TR22)

### Tray Options

MX-CS21	250 Sheet Paper Drawer
MX-CS23	550 Sheet Paper Drawer
MX-CS25	2,100 Sheet Paper Drawer

### Miscellaneous

AR-D5133NT	Digital 120 Volt, 15 Amps, 2 Outlets, Maximum Power Surge Protector
------------	---

### Supplies

MX-B70T	Black Toner Cartridge Estimated 45,000 images @ 5% Image Area/Cartridge
MX-B70DU	Black Drum Estimated Yield - 150,000 Images/Package





**SHARP®**

**Managed Print Services**

## Managed Print Services

Customized Approach for More Efficiency and Control

Overlooking your print environment can be costly and inefficient, hindering your organization in the long run. Managed Print Services (MPS) from Sharp offer a consultative approach to manage your print infrastructure and maximize uptime, productivity and security.

### Take Control to Cut Costs

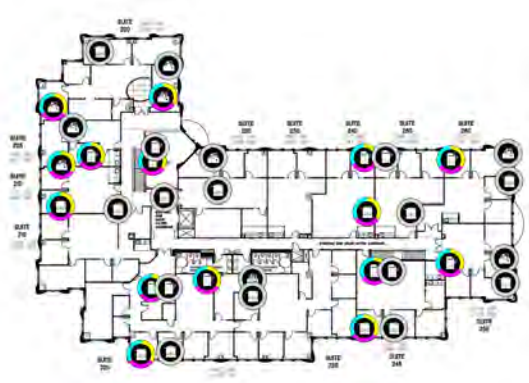
All too often companies are unaware of how many printers they have or their actual spend on printing. A complete assessment by Sharp helps you understand the current state of your print infrastructure and your total cost of printing using first-class reporting and device mapping tools.

### Optimize Your Print Environment

The entire lifecycle of your print fleet is managed by us. To improve cost-effectiveness and efficiency, Sharp removes redundant devices and replaces aging equipment. You can simplify the user experience by standardizing models and drivers from one device to the next and streamline support by consolidating all your maintenance contracts into one.



#### Before MPS - Unmanaged Print Environment



#### After MPS - Optimized, Right-Sized Fleet



### Allow IT to Focus on Critical Projects

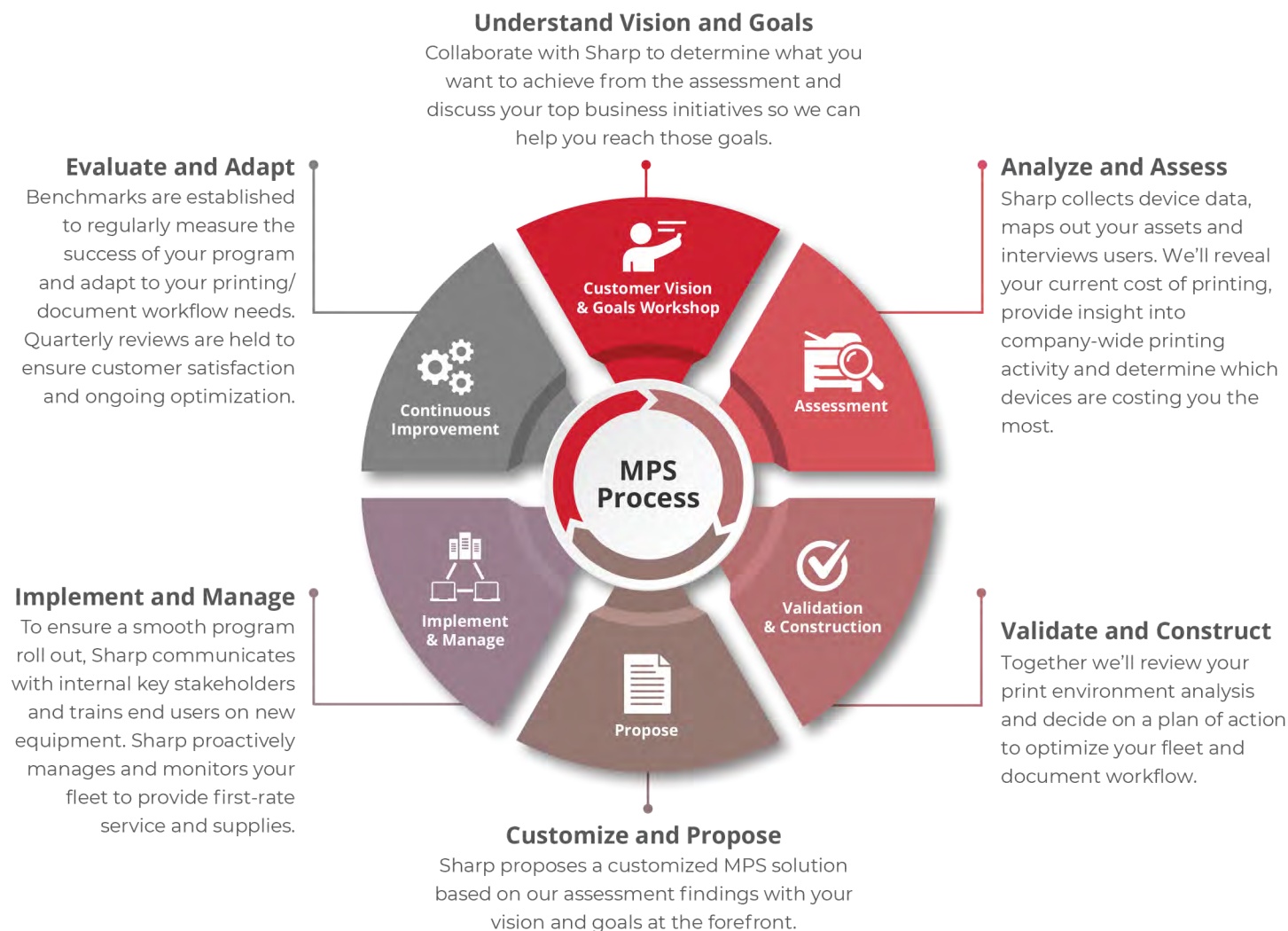
Sharp manages and maintains your fleet. This frees IT resources from printer-related issues and eliminates help desk calls to keep your team focused on key IT projects.

### Streamline Support from One Partner

Gone are the days of processing invoices from multiple vendors. Sharp sends a single, predictable monthly invoice for an all-inclusive cost-per-copy plan. By only paying for what you print, we can help you experience a significant savings.

# What would you like to achieve under an MPS program?

**Let Sharp's systematic approach to your print environment help you reach your goals.**



## Experience the Benefits of Managed Print Services

- Know your true cost of printing
- Cut costs on devices, supplies and service
- Simplified budgeting for printing expenses
- Free up the IT department
- One vendor for all your printing needs
- Toner arrives just in time
- More uptime through proactive support
- Ongoing fleet optimization

**Discover more about our MPS program and our complementary assessment today.**





## MAC Contract #

### Managed Print Services

	Description	Hourly Labor Charge	One Time Charge (if Applicable)	Other Method of Charging (If Applicable)
<b>Assessment</b>	<b>Managed Print Services Assessment</b>			
<b>Assessment Phase 1</b>	Initial appointment - Collaborative discussion to discuss top business initiatives and goals of assessment.	\$0.00	\$0.00	N/A
<b>Assessment Phase 2</b>	Site Walkthrough & Device Mapping, Departmental Interviews, Detailed Cost Analysis, Consultative Fleet Analysis & Review, & Customized Program Creation	Based on Statement of Work	Based on Statement of Work	Based on Statement of Work
<b>Assessment Phase 3</b>	Auto Toner Replenishment (ATR), Advanced Account Management, Periodic Account Reviews, Change Management, Fleet Management, Sharp IT and Professional Services.	Based on Statement of Work	Based on Statement of Work	Based on Statement of Work
<b>Maintenance</b>	<b>Service and Supplies</b>			
<b>Cost Per Page Mono</b>	The MPS pricing listed is a not to exceed Cost Per Page (for 8.5"x11" page) to provide Remote Help Desk Support and/or On-Site Break/Fix, Toner Supplies, for accepted supported models based on SOW which is required for MPS program.	N/A	N/A	per page
<b>Cost Per Page Color</b>	The MPS pricing listed is a not to exceed Cost Per Page (for 8.5"x11" page) to provide Remote Help Desk Support and/or On-Site Break/Fix, Toner Supplies, for accepted supported models based on SOW which is required for MPS program.	N/A	N/A	per page



**SHARP®**

# **LED and LCD Monitors Including AQUOS BOARD® Interactive Display Systems**

## MAC Contract #

PN-CD701

Windows collaboration display from Sharp

- ◆ 70" class (69.5" diagonal) screen size
- ◆ 4K Ultra-HD UV<sup>2</sup>A Edge Lit LCD Screen
- ◆ Projected Capacitive Touch Screen
- ◆ 10-Point Multi-Touch Screen
- ◆ Modular 4K Camera with Microphone Array x4
- ◆ IoT Sensor Hub with Motion, Light, Temperature/humidity & Air Quality Detection
- ◆ Dual Screen Wireless Casting and Daisy Chain
- ◆ Crestron Connected™ Compatibility
- ◆ Built-In 12W per Channel Stereo Audio System
- ◆ 3-Year Limited Warranty



Model Number	Description	Contract Pricing
PN-CD701	<p><i>The Windows collaboration display is a next generation 4K Ultra HD 70" Class (69.5" diagonal) interactive display that enables better space utilization and more productive collaboration in meetings, boardrooms, training rooms, technical reviews and almost anywhere else.</i></p> <p><i>As well as using Sharp's award-winning technology, together with a built-in microphone, high quality camera and IoT sensor hub, it works seamlessly with the best Microsoft 365 collaboration tools. Furthermore, it's all backed by the cloud to deliver outstanding ease of use and enable the continual analysis of meeting room conditions and usage.</i></p>	\$6,549.00

\* Available through WCD certified dealers only.

Options & Accessories		
PN-ZU01	Additional 8 meter USB type C cable for connecting an additional PC to the Windows collaboration display.	\$414.00
PN-SPCi7W10C	Optional Enhanced PC for use with all Sharp AQUOS BOARD displays. Intel® Coffee Lake Core™ i7 processor with Windows® 10 Pro and 16GB RAM. Attaches to rear of display.	\$1,748.00

## MAC Contract #

PN-L401C

### Sharp AQUOS BOARD® Interactive Display System

- ◆ 40" Class (39.5" diagonal) Interactive Display Systems
- ◆ 10-Point Capacitive Multi-Touch Screen
- ◆ Intel® Mini-OPS Expansion Slot supports the optional PN-ZB03H HDBaseT™ 2.0 and PN-ZB03W Wireless Expansion Boards
- ◆ SHARP Display Connect™ Software Included for Easy Connectivity with Mobile Devices
- ◆ SHARP Touch Viewer™ Software provides Easy Manipulation of Multiple File Types
- ◆ Enhanced Writing Surface with Improved Fingerprint and Glare Resistance
- ◆ Crestron Connected™ Compatibility
- ◆ Brilliant High Definition (1,920 x 1,080) Edge Lit LED Display
- ◆ Built-In 10W per Channel Stereo Audio System
- ◆ Bundled stand for desktop/landscape set-up
- ◆ 3-Year Limited Warranty



Model Number	Description	Contract Pricing
PN-L401C	40" class (39.5" diagonal) AQUOS BOARD Interactive Display System with full 1920 x 1080 HD resolution is suitable for meetings of 2 to 6 people watching the screen at distances of 3 to 6 feet. The capacitive touch screen brings high performance of touch operation. The PN-L401C is bundled with a touch pen with 2 mm tips that enables fine writing of small letters and precise drawings. The PN-L401C also offers an expansion slot for optional HDBaseT Receiver Board or Wireless Board. The selectable orientation allows flexibility of setting application.	\$1,873.00

Options & Accessories		
PN-SPCi5W10C8GB	Optional Standard PC for use with all Sharp AQUOS BOARD displays. Intel® Coffee Lake Core™ i5 processor with Windows® 10 Pro and 8GB RAM. Attaches to rear of display.	1,357.00
PN-SPCi7W10C	Optional Enhanced PC for use with all Sharp AQUOS BOARD displays. Intel® Coffee Lake Core™ i7 processor with Windows® 10 Pro and 16GB RAM. Attaches to rear of display.	1,748.00
PN-SL2C	Sharp Display Connect Software License Key for Chrome OS/Chromebook Support	66.00
PN-SU01	Advanced Feature License for Sharp Pen Software v.3.7 and above	66.00
PN-ZB03W	Wireless Expansion Board	849.00
PN-ZB03H	HDBaseT Receiver Board	442.00



## MAC Contract #

4T-B70CT1U

Sharp AQUOS BOARD® Interactive Display

- ◆ 70" Class (69.5" diagonal) 4K Ultra HD Interactive Display
- ◆ High Definition (3,840 x 2,160) Resolution with 4000:1 Contrast Ratio
- ◆ 20-Point Multi-Touch Screen
- ◆ Streamlined Design using Direct LED Backlighting
- ◆ Public Mode which disables operational controls to prevent unwanted adjustments by people in public locations
- ◆ SHARP Pen Software
- ◆ RS-232C control capability
- ◆ Built-in Digital Tuner
- ◆ Built-in 10 Watt Per Channel Stereo Audio System
- ◆ 3-Year Limited Warranty



Model Number	Description	Contract Pricing
<b>4T-B70CT1U</b>	<i>Looking for a powerful, yet affordable solution to make your classrooms and meeting rooms interactive? The 4T-B70CT1U AQUOS BOARD® interactive display is a perfect solution for those in search of a large format display that brings interactivity to any room. Plug and Play will let you unleash the interactive capabilities of your devices with easy setup and without the need to install drivers. Precise 20 point multi-touch functionality allows multiple people to collaborate effectively and creatively to facilitate effective learning. A powerful RS-232C and LAN command set enables flexible remote control from connected devices. When selected, "Public Mode" prevents unwanted operations by people in a classroom or any other public location.</i>	\$1,650.00

Options & Accessories		
PN-SPCi5W10C8GB	Optional Standard PC for use with all Sharp AQUOS BOARD displays. Intel® Coffee Lake Core™ i5 processor with Windows® 10 Pro and 8GB RAM. Attaches to rear of display.	1,357.00
PN-SPCi7W10C	Optional Enhanced PC for use with all Sharp AQUOS BOARD displays. Intel® Coffee Lake Core™ i7 processor with Windows® 10 Pro and 16GB RAM. Attaches to rear of display.	1,748.00
PN-SU01	Advanced Feature License for Sharp Pen Software v.3.7 and above	66.00
PN-SR780M	Rolling Cart Floor Stand	664.00
PN-SR763ACC1	Optional PC/keyboard accessory shelf for use with PN-SR780M	94.00

## MAC Contract #

PN-CE701H / PN-C751H / PN-C861H

### Sharp AQUOS BOARD® Interactive Display System

- ◆ 70" Class (69 1/2" diagonal) / 75" Class (74 1/2" diagonal) / 86" Class (85 9/16" diagonal) screen size
- ◆ Brilliant Ultra-HD (3840 x 2160) LED Direct Lit Display
- ◆ Display, Write and Share information
- ◆ IR Touch Screen Technology
- ◆ 10-Point Multi-Touch Screen (PN-CE701H)  
20-Point Multi-Touch Screen (PN-C751H & PN-C861H)
- ◆ Simultaneous writing allows up to 4 people to write on the screen at the same time using touch pens or fingers
- ◆ Built-in SoC controller with Arm® Cortex®- A53 Processor (quad core)
- ◆ Built-in Whiteboard application
- ◆ OPS (Open Pluggable Specification) - Compliant Expansion Slot
- ◆ Built-in Wireless LAN connectivity for wireless presentations\*
- ◆ 350 cd/m<sup>2</sup> Brightness; 4,000:1 Contrast Ratio (PN-CE701H)  
400 cd/m<sup>2</sup> Brightness; 1,200:1 Contrast Ratio (PN-C751H & PN-C861H)
- ◆ One-Touch Operability (frequently used buttons are located on the front bezel)
- ◆ Built-in 10W per Channel Stereo Audio System
- ◆ 3-Year Limited Warranty; engineered for 16 hours per day use

\* Compatible with Windows® and Android™ operating systems.



Model Number	Description	Contract Pricing
PN-CE701H	<i>Looking for a smart, interactive display for your office or classroom? Meet the all-in-one Sharp PN-CE701H, PN-C751H and PN-C861H AQUOS BOARD interactive display systems that make all your visual communications more lively and productive. Available in three sizes - 70" Class (69 1/2" diagonal), 75" Class (74 1/2" diagonal) and 86" Class (85 9/16" diagonal), respectively - this series opens up an affordable path to pristine 4K Ultra HD resolution. A pre-installed launcher makes it quick and easy to start up and use the interactive whiteboard. Your lecture, presentation, or lesson can now be more creative and involving.</i>	\$3,259.00
PN-C751H		\$4,248.00
PN-C861H		\$7,455.00

Options & Accessories		
PN-SPCi5W10C8GB	Optional Standard PC for use with all Sharp AQUOS BOARD displays. Intel® Coffee Lake Core™ i5 processor with Windows® 10 Pro and 8GB RAM. Attaches to rear of display.	1,357.00
PN-SPCi7W10C	Optional Enhanced PC for use with all Sharp AQUOS BOARD displays. Intel® Coffee Lake Core™ i7 processor with Windows® 10 Pro and 16GB RAM. Attaches to rear of display.	1,748.00
PN-SU01	Advanced Feature License for Sharp Pen Software v.3.7 and above	66.00
PN-SR780M	Rolling Cart Floor Stand	664.00
PN-SR763ACC1	Optional PC/keyboard accessory shelf for use with PN-SR780M	94.00

## MAC Contract #

PN-L805H

### Sharp AQUOS BOARD® Interactive Display System

- ◆ 80" class (80.5" diagonal) screen size
- ◆ 4K Ultra-HD TFT Full Array LCD Screen
- ◆ Capacitive Touch Screen with Direct Bonding Technology
- ◆ 30-Point Multi-Touch Screen for up to 4 Simultaneous Users
- ◆ Intel® Mini-OPS Expansion Slot supports the optional PN-ZB03H HDBaseT™ 2.0 and PN-ZB03W Wireless Boards
- ◆ SHARP Display Connect™ Software Included for Easy Connectivity with Mobile Devices
- ◆ SHARP Touch Viewer™ Software provides Easy Manipulation of Multiple File Types\*
- ◆ Enhanced Writing Surface with Improved Fingerprint and Scratch Resistance
- ◆ Crestron Connected™ Compatibility
- ◆ Landscape, Portrait, Face-up Operation
- ◆ Built-In 10W per Channel Stereo Audio System
- ◆ 3-Year Limited Warranty



\* Available for download via included download application

Model Number	Description	Contract Pricing
PN-L805H	Featuring 4K** resolution, the 80" Class (80.5" diagonal) PN-L805H interactive display enhances the Sharp AQUOS BOARD lineup. Stunning 4K Ultra-HD resolution reproduces your content accurately with incredibly precise rendering of color and detail. It offers the "Pen-on-Paper" user experience promised by the Sharp AQUOS BOARD series, providing revolutionary writing comfort close to actually using a pen to write on real paper. The PN-L805H interactive display can play an especially valuable role in the architecture, design, and video industries, as well as in museums and libraries, all of which require precise detail and superior interactivity. This is your go-to monitor when you need true-to-life detail and superb interactivity.	\$15,418.00

\*\* (3,840 x 2,160 pixel resolution)

Options & Accessories		
PN-SPCi5W10C8GB	Optional Standard PC for use with all Sharp AQUOS BOARD displays. Intel® Coffee Lake Core™ i5 processor with Windows® 10 Pro and 8GB RAM. Attaches to rear of display.	1,357.00
PN-SPCi7W10C	Optional Enhanced PC for use with all Sharp AQUOS BOARD displays. Intel® Coffee Lake Core™ i7 processor with Windows® 10 Pro and 16GB RAM. Attaches to rear of display.	1,748.00
PN-SL2C	Sharp Display Connect Software License Key for Chrome OS/Chromebook Support	66.00
PN-SU01	Advanced Feature License for Sharp Pen Software v.3.7 and above	66.00
PN-SR780M	Rolling Cart Floor Stand	664.00
PN-SR763ACC1	Optional PC/keyboard accessory shelf for use with PN-SR780M	94.00
PN-ZB03W	Wireless Expansion Board	849.00
PN-ZB03H	HDBaseT Receiver Board	442.00

## MAC Contract #

PN-L651H / PN-L751H / PN-L851H

### Sharp AQUOS BOARD® Interactive Display System

- ◆ 65" class (64 1/2" diagonal) / 75" class (74 1/2" diagonal) / 85" class (84 9/16" diagonal) screen size
- ◆ Supports 4K Ultra-HD (3,840 x 2,160) pixel resolution
- ◆ Built-in Controller with IWB Launcher
- ◆ 20-Point Touch Screen
- ◆ Wireless LAN and Bluetooth® compatibility
- ◆ SHARP Display Connect™ Software Included for Easy Connectivity with Mobile Devices
- ◆ SHARP Touch Viewer™ Software provides Easy Manipulation of Multiple File Types\*
- ◆ Direct Drawing allows the LCD monitor to be used like a regular whiteboard
- ◆ Quad Screen Display
- ◆ Landscape, Portrait Operation
- ◆ Built-In 10W per Channel Stereo Audio System
- ◆ 3-Year Limited Warranty



\* Available for download via included download application

Model Number	Description	Contract Pricing
PN-L651H	The PN-L651H/751H/851H AQUOS BOARD interactive display systems are made for show and tell in the digital age. Whatever screen size you choose - 65", 75" or 85" Class (64 1/2, 74 1/2 or 84 9/16, respectively) - you get pristine 4K Ultra HD resolution. With a pre-installed controller and built-in whiteboard and wireless functionality, they are always ready for a quick meeting. The touchscreen supports up to 20 touch points at a time. You can use either a finger or the bundled touch pen, which gives a Pen-on-Paper® writing experience. Your group collaborations just got more seamless and intuitive.	\$4,018.00
PN-L751H		\$5,377.00
PN-L851H		\$8,824.00

Options & Accessories		
PN-SPCi5W10C8GB	Optional Standard PC for use with all Sharp AQUOS BOARD displays. Intel® Coffee Lake Core™ i5 processor with Windows® 10 Pro and 8GB RAM. Attaches to rear of display.	1,357.00
PN-SPCi7W10C	Optional Enhanced PC for use with all Sharp AQUOS BOARD displays. Intel® Coffee Lake Core™ i7 processor with Windows® 10 Pro and 16GB RAM. Attaches to rear of display.	1,748.00
PN-SL2C	Sharp Display Connect Software License Key for Chrome OS/Chromebook Support	66.00
PN-SU01	Advanced Feature License for Sharp Pen Software v.3.7 and above	66.00
PN-SR780M	Rolling Cart Floor Stand	664.00
PN-SR763ACC1	Optional PC/keyboard accessory shelf for use with PN-SR780M	94.00

## MAC Contract #

LL-B240 / LL-B270

Desktop LCD Monitor

- ◆ 24" Class (23.8" Diagonal), 27" Class (27" Diagonal) Desktop Monitors
- ◆ Full High Definition (1,920 x 1,080 pixels) Resolution with 200 cd/m<sup>2</sup> Brightness (default) / 250 cd/m<sup>2</sup> Brightness (maximum) and 3,000:1 Contrast Ratio
- ◆ Thin Profile - LL-B240 & LL-B270 (1/4" at thinnest part)
- ◆ Adjustable Blue Light (can be set to four levels)
- ◆ 178 (LL-B240 & LL-B270) Degree Viewing Angle
- ◆ Streamlined Design Using Edge Lit LED Backlighting
- ◆ 3-Year Limited Warranty



Model Number	Description	Contract Pricing
LL-B240	<p>Sharp's desktop monitors are a space-conscious solution for any office desk! With their 2 mm bezel, svelte profile and stylish round stand, the 24" Class (23.8" diagonal) LL-B240 and 27" Class (27" diagonal) LL-B270 desktop monitors seem to float before your eyes. They are much slimmer than a typical office monitor making on-screen content more noticeable than the hardware. The LL-B240 and LL-B270 desktop monitors won't dominate a desk, even with several monitors set up. In fact, they are designed to free up a business person's valuable desk "real estate" to ultimately enhance productivity! In addition to their minimal profile, these monitors support Full HD resolution, have adjustable light settings for optimal comfort and a wide viewing angle of 178 (LL-B240 &amp; LL-B270) degrees so users can see high-quality images with less alterations to color and brightness.</p>	\$171.00
LL-B270		\$216.00



## MAC Contract #

PN-HB851

### Professional LCD Monitor

- ◆ 85" Class (84 9/16" Diagonal) Monitor
- ◆ Brilliant Ultra-HD (3840 x 2160) LED Direct Lit Display
- ◆ Built-in SoC controller with Android™ OS 7.1 & Arm® Cortex hexa-core processor
- ◆ Intel® Mini-OPS Expansion Slot supports the optional PN-ZB03H HDBaseT™ 2.0 and PN-ZB03W Wireless Expansion Boards
- ◆ Landscape, Portrait, Face-up Operation
- ◆ 350 cd/m<sup>2</sup> Brightness; 5,000:1 Contrast Ratio
- ◆ Crestron Connected™ Compatibility
- ◆ Built-in 10W Per Channel Stereo Audio System
- ◆ 3 Year Limited Warranty



Model Number	Description	Contract Pricing
PN-HB851	<i>You can completely trust the 85" Class (84 9/16" diagonal) PN-HB851 monitor to get your message out there. What sets this product apart is a built-in system-on-a-chip (SoC) controller that allows it to deliver digital signage straight out of the box. Daily operation is a breeze, thanks to on-board content distribution software. Also, SHARP e-Signage S allows you to create and manage professional-grade content. And optional upgrades give the monitors even more flexibility to interact with external devices. It all adds up to a powerful signage solution that's built to engage.</i>	\$7,515.00

Options & Accessories		
PN-ZB03W	Wireless Expansion Board	849.00
PN-ZB03H	HDBaseT Receiver Board	442.00
PN-SPCi5W10C8GB	Optional Standard PC for use with all Sharp AQUOS BOARD displays. Intel® Coffee Lake Core™ i5 processor with Windows® 10 Pro and 8GB RAM. Attaches to rear of display.	1,357.00



## MAC Contract #

PN-UH431 / PN-UH501 / PN-UH551

### Commercial LCD Displays

- ◆ 43" Class (42 1/2" Diagonal) / 50" Class (49 1/2" Diagonal) / 55" Class (54 5/8" Diagonal) Commercial LCD Displays
- ◆ 4K-Ultra High Definition (3,840 x 2,160) Resolution with 400 cd/m<sup>2</sup> Brightness and 4,000:1 Contrast Ratio
- ◆ Streamlined Design using direct lit LED Backlighting
- ◆ RS-232C Control Capability
- ◆ Built-in Digital Tuner
- ◆ Built-in 10W per Channel Stereo Audio System
- ◆ 3-Year Limited Warranty



Model Number	Description	Contract Pricing
PN-UH431	<i>Engage, inform, and entertain your audience with a Sharp commercial LCD display. The PN-UH431, PN-UH501 and PN-UH551 displays deliver your message with eye-catching detail at every scale. Along with 4K Ultra HD resolution, they boast a built-in USB media player. So, even without a connected PC, you can display photos and videos with amazing realism. Belying their slimline profiles, these monitors pack advanced professional features and on-board NTSC/ATSC tuners. Whether you set them up in a retail, hospitality, or business setting, these monitors are built to make an impact.</i>	\$710.00
PN-UH501		\$853.00
PN-UH551		\$919.00



## MAC Contract #

4T-B60CJ1U / 4T-B70CJ1U / 4T-B80CJ1U

4K Ultra HD Commercial LCD Display

- ◆ 60" Class (60.1" diagonal), 70" Class (69.5" diagonal) and 80 (80.0" diagonal) 4K Ultra HD Full Color Commercial Display
- ◆ High Definition (3,840 x 2,160) Resolution with 4000:1 Contrast Ratio
- ◆ Full Complement of Inputs and Outputs for Easy and Enhanced Connectivity
- ◆ Public Mode which disables operational controls to prevent unwanted adjustments by people in public locations
- ◆ LED backlight that supports a wide color gamut
- ◆ Built-in 10 Watt Per Channel Stereo Speakers
- ◆ 3-Year Limited Warranty



Model Number	Description	Contract Pricing
4T-B60CJ1U	Give your message a big-screen boost with a Sharp commercial LCD display. Whether you choose the 60" (60.1" diagonal) Class, 70" (69.5" diagonal) Class or 80" (80.0 diagonal) Class model, the 4T-B Series displays convey your message with the true-to-life precision of 4K Ultra-HD resolution. Built-in tuner support and business-friendly features are packed into an elegantly slender frame. In hospital, business and retail settings, the 4T-B Series displays excel at reaching your audience, making them more informed, more entertained and more engaged.	\$934.00
4T-B70CJ1U		\$1,367.00
4T-B80CJ1U		\$3,805.00



## MAC Contract #

PN-UH861

Flat - Panel Professional 4K Ultra HD LCD Display

- ◆ 86" Class (85-5/8" diagonal) widescreen 4K Ultra HD Full Color Professional Display
- ◆ High Definition (3,840 x 2,160) Resolution with 1,200:1 Contrast Ratio and 8ms Response Time
- ◆ Full Complement of Inputs and Outputs for Easy and Enhanced Connectivity
- ◆ Public Mode which disables operational controls to prevent unwanted adjustments by people in public locations
- ◆ LED backlight that supports a wide color gamut
- ◆ Built-in 10 Watt Per Channel Stereo Speakers
- ◆ 3-Year Limited Warranty



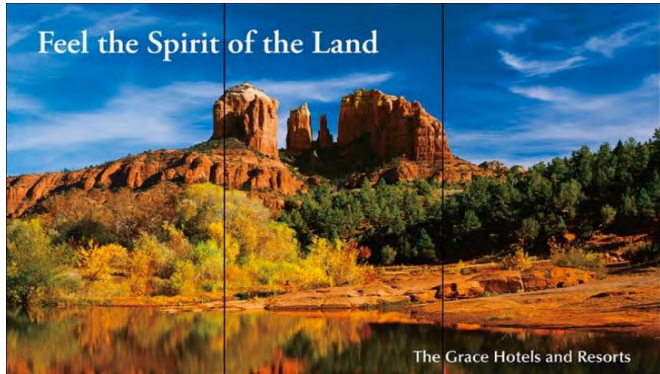
Model Number	Description	Contract Pricing
PN-UH861	<i>Engage, inform, and entertain your audience with a Sharp commercial LCD display. The PN-UH861 display delivers your message with eye-catching detail at every scale. Along with 4K Ultra HD resolution, it boasts a built-in USB media player. So, even without a connected PC, you can display photos and videos with amazing realism. Belying its slimline profile, this monitor packs advanced professional features and an on-board NTSC/ATSC tuner. Whether you set it up in a retail, hospitality, or business setting, this monitor is built to make an impact.</i>	\$4,948.00

## MAC Contract #

PN-V701

Flat - Panel Professional Large-Format LCD Monitor

- ◆ 70" Class (69 1/2" Diagonal) Professional LCD Monitor
- ◆ Brilliant High Definition (1,920 x 1,080) UV<sup>2</sup>A LCD Display
- ◆ Up to 700 cd/m<sup>2</sup> brightness and 4,000:1 Contrast Ratio
- ◆ Sharp Advanced UCCT (Uniform Color Calibration Technology)
- ◆ Expansion slot supports HDBaseT™ 2.0 with optional PN-ZB03H expansion board
- ◆ Full-Array LED Backlight
- ◆ Enlarge (Zoom) Display Mode
- ◆ Optional Control Kit allows all monitors in a video wall to be operated using one remote



Model Number	Description	Contract Pricing
PN-V701	<i>The 70" Class (69-1/2" Diagonal) full high-definition PN-V701 Professional LCD Monitor allows you to build video walls with exceptionally thin 4.4 mm* combined bezels that will complement virtually any commercial or public space. Whether installed in a shopping mall, hotel, control room, transport hub, or conference hall, a bank of these monitors will convey your message with overwhelming style and precision. Sharp's Advanced UCCT (Uniform Color Calibration Technology) allows the color reproduction and brightness to be beautifully consistent on each individual LCD monitor and thus across the entire video wall.</i>	\$8,979.00

\* 1.5 mm (right/bottom), 2.9 mm (left/top)

Options & Accessories		
PN-ZB03H	HDBaseT Receiver Board	442.00
PN-ZR02	Optional Control Kit that permits the monitors in a video wall to be controlled using one remote controller when one monitor is fitted with a remote control sensor box (included) - Includes remote controller and remote control sensor box.	132.00

## MAC Contract #

PN-R606 / PN-R706

Professional LCD Display

- ◆ 60" Class (60" Diagonal) and 70" Class (69.5" Diagonal) Full Color Professional Displays
- ◆ Intel® Mini-OPS Expansion Slot supports the optional PN-ZB03H HDBaseT™ 2.0 and PN-ZB03W Wireless Expansion Boards
- ◆ Landscape, Portrait, Face-up, Face-down Operation
- ◆ Crestron Connected™ Compatibility
- ◆ High Definition (Native 1920 x 1080) Resolution with 700 cd/m<sup>2</sup> Brightness and 5,000:1 Contrast Ratio
- ◆ Built-in 10 Watt Per Channel Stereo Audio System
- ◆ Engineered for 24/7 Use - 3 Year Limited Warranty



Model Number	Description	Contract Pricing
<b>PN-R606</b>	<i>When it comes to digital signage, size and flexibility matter. Sharp's 60" (60" diagonal) PN-R606 and 70" Class (69.5" diagonal) PN-R706 professional LCD monitors offer high-impact screen space along with the flexibility to match your installation location. Whether set up at a tilted angle or hung from the ceiling, these eye-catching monitors have the size to convey your message clearly and vividly to your audience. DisplayPort™ 1.2 connectivity comes standard and the interface can be expanded with an optional wireless board or HDBaseT™ 2.0 receiver board. All this flexibility gives you greater scope to create an appealing space and deliver a compelling message.</i>	\$3,061.00
<b>PN-R706</b>		\$4,372.00

Options & Accessories		
PN-ZB03W	Wireless Expansion Board	849.00
PN-ZB03H	HDBaseT Receiver Board	442.00
PN-SPCi5W10C8GB	Optional Standard PC for use with all Sharp AQUOS BOARD displays. Intel® Coffee Lake Core™ i5 processor with Windows® 10 Pro and 8GB RAM. Attaches to rear of display.	1,357.00

## MAC Contract #

8M-B70AU

### Professional LCD Display

- ◆ 70" Class (69.5" Diagonal) Screen Size
- ◆ 8K-Ultra High Definition (7,680 x 4,320) LCD Display
- ◆ Full Array LED Backlighting with Local Dimming Technology
- ◆ HDR (High Dynamic Range) with Mega Contrast and Wide Color Gamut Technology
- ◆ 4K and 2K Upconversion to 8K
- ◆ 400 cd/m<sup>2</sup> Brightness and 3,000:1 Contrast Ratio
- ◆ RS-232C Control Capability
- ◆ Built-in 35W 2.1 Channel Stereo Audio System
- ◆ 3 Year Limited Warranty



Model Number	Description	Contract Pricing
8M-B70AU	<i>With its stunning 8K Ultra-HD resolution, the Sharp 8M-B70AU display packs 33 million pixels into its 70" class LCD panel. This 8K monitor with 7,680 x 4,320 pixels achieves a screen resolution 16 times higher than full HD. You can't help but feel the depth and presence of the stunningly realistic on-screen images. Sophisticated color-processing technologies support a wide range of color expression along with faithful color mapping on the display. The rich color palette of this 8K monitor adds depth to the content and brings the entire screen to life.</i>	\$13,158.00

## MAC Contract #

8M-B80AX1U

Professional LCD Display

- ◆ 80" Class (80 1/2" Diagonal) Screen Size
- ◆ 8K-Ultra High Definition (7,680 x 4,320) LCD Display
- ◆ Full Array LED Backlighting with Local Dimming Technology
- ◆ HDR (High Dynamic Range) with Wide Color Gamut Technology
- ◆ 4K and 2K Upconversion to 8K
- ◆ 800 cd/m<sup>2</sup> Brightness, Peak Brightness 4,000 cd/m<sup>2</sup>
- ◆ 3,000:1 Contrast Ratio
- ◆ RS-232C Control Capability
- ◆ Built-in 20W 2.1 Channel Stereo Audio System
- ◆ 3 Year Limited Warranty



Model Number	Description	Contract Pricing
<b>8M-B80AX1U</b>	<i>With its stunning 8K Ultra-HD resolution, the Sharp 8M-B80AX1U display packs 33 million pixels into its 80" class LCD panel. This 8K monitor with 7,680 x 4,320 pixels achieves a screen resolution 16 times higher than full HD. You can't help but feel the depth and presence of the stunningly realistic on-screen images. Sophisticated color-processing technologies support a wide range of color expression along with faithful color mapping on the display. The rich color palette of this 8K monitor adds depth to the content and brings the entire screen to life.</i>	\$14,322.00



# Help Stay Safe Without Slowing Down

Smart touchless solution for temperature, face mask checks and screening questions.

## Bring peace of mind to staff and visitors with contactless screening.

Engineered and designed to deliver a fast, safe and reliable temperature screening and check-in experience that doesn't involve any touchpoints or another person.



### Accurate and fast temperature check

Combines power infrared and environmental sensors to perform a non-invasive and highly accurate temperature measure in 0.2 seconds.



### Zero touchpoint, away from staff

Completely touchless, starting automatically using LIDAR technology and AI. Our mobile web app can be used for self check-ins and answering screening questions.



### Staff privacy and data security

Doesn't rely on facial recognition to connect employee records, with a built-in keycard and access control compatible reader.

## Designed for your staff, contractors, customers and more.

No matter what the scenario requires, LivMote™ has adaptable modes to provide a streamlined screening experience that doesn't feel burdensome.



Office



Healthcare



Government



Education

Final product design and user interface are subject to change.

©2020 Sharp Electronics Corporation. All rights reserved. Sharp is a registered trademark of Sharp Corporation. LivMote is a trademark of Soda Labs, Inc.



# How LivMote Works

Before entering the building, employees and visitors take a customized web-based questionnaire on a personal smartphone. If approved, they are directed to a LivMote device for touchless face mask detection and temperature reading.



To learn more, contact your Sharp representative or visit [Sharpusa.com](https://www.sharpusa.com).

Final product design and user interface are subject to change.

©2020 Sharp Electronics Corporation. All rights reserved. Sharp is a registered trademark of Sharp Corporation. LivMote is a trademark of Soda Labs, Inc.

## MAC Contract #

LivMote  
Non-Contact Infrared Thermometer

Model	Description	Contract Pricing
LIVMTHW	LivMote with 125 Khz RFID Proximity Card Scanner	\$499
LIVMTHW13	LivMote with 13.56 Mhz RFID Proximity Card Scanner	499
LIVMT1YS	LivMote Cloud Service 1-year subscription	1,000
LIVMT2YS	LivMote Cloud Service 2-year subscription*	1,540
LIVMT3YS	LivMote Cloud Service 3-year subscription*	2,020

\*Hardware Scanner and Cloud Service come standard with LiveMote device. Purchase of hardware (LIVMTHW or LIVMTHW13) and Cloud Service subscription is necessary to setup, configure and manage LivMote.

**Options & Accessories**

LIVMTFSB	Floor Standing Base	\$90
LIVMTFSP	Floor Standing Pole	90
LIVMTWM	Wall Mount	79
LIVMTDM	Desk Mount with Kick Stand	45
LIVMTAD1Y	Additional Subscription 1yr	720
LIVMT1YSHIP	HIPAA Cloud Service Add-on 1 yr	228
LIVMT2YSHIP	HIPAA Cloud Service Add-on 2 yr	456
LIVMT3YSHIP	HIPAA Cloud Service Add-on 3 yr	684

## Professional Services are Now Available

Providing all of the tools you need for complete system integration



Sharp Electronics provides MAC customers professional service assistance on a contract basis. Professional service assistance is provided in 8-hour (**DSERVICE**) and 4-hour (**DSERVICE-II**) blocks of time.

Professional services may include:

- Technical assistance installing Sharp hardware and/or Sharp software within large or complex network environments
- Special customization of Sharp software
- Assisting customer developers creating custom business applications using Sharp's OSA software development tools

However, DService and DService-II professional services are not used to install or configure third-party software, replace or augment customer IT personnel responsibilities, or to manage projects on behalf of a customer's own project management resources.

Contact your Sharp Government & Major Account Manager for more information on scheduling Professional Services at your location.

### Professional Services Rates:

#### **Full Day Service Fee (DSERVICE)**

\$1,500.00 (Travel Expenses Additional)

#### **Professional Services Hourly Rate (DSERVICE II)**

\$175.00 per Man Hour with 4 hour minimum charge (travel expenses additional)

#### ***Please Note:***

##### **A Statement of Work is required before scheduling Professional Services at your location**

A mutually signed statement of work is required to initiate a professional services engagement with a customer. The statement of work will specify the scope of the engagement, project milestones, a begin-date, an end-date, and requirements for each party involved in the engagement. The DService and DService-II units necessary to fulfill the engagement are determined based on the scope and requirements of the engagement.

## ENVIRONMENTAL CONSERVATION

Sharp's ongoing commitment and dedication to developing eco-friendly document systems set a high standard for the industry



### An Environmentally Responsible Approach to Product Design

Our document systems utilize Sharp's advanced micro-fine toner technology, which offers a lower consumption rate and produces less waste, resulting in longer replacement intervals. Sharp supplies are packaged using fully recyclable materials. Long-life consumable parts help minimize service intervals and downtime, resulting in lower operating costs. Energy-saving modes allow power to be reduced or shut off at set intervals. And, Sharp document systems are RoHS compliant to meet the latest green initiatives.



### Special Recognition for Energy Efficient Product Design

In 2014, Sharp received special recognition by the US Environmental Protection Agency (EPA) for Energy Efficient Product Design. Sharp is recognized for its participation in providing valuable insight and information in ENERGY STAR®'s specification revision process and by demonstrating creativity in helping the EPA address and resolve technical challenges to build robust specifications.



### Sharp Business Products are EPEAT® Certified

EPEAT (Electronic Product Environmental Assessment Tool) is a 3rd party global rating system for greener electronics that requires ongoing independent verification of manufacturer claims. Businesses, government agencies, schools, hospitals and other institutions are using EPEAT as the environmental benchmark to help them make informed purchasing decisions. By using EPEAT standards to purchase greener electronics, you will be assuring your organization's environmental sustainability goals and help to preserve our natural resources.

### Sharp's Environmental Leadership

As a testament to our commitment to the environment, Sharp was a former recipient of the Excellence in Partnership Green Contractor Award and the Evergreen Award from the U.S. Government's General Services Administration and the Coalition for Government Procurement.



*Sharp's commitment to the environment sets a high standard for the industry.*

The **Green Contractor Award** recognizes contractors that have made the best overall commitment to the environment by offering environmentally friendly products and services or adhering to environmentally sound manufacturing procedures.

The **Evergreen Award** identifies environmentally-friendly businesses and their efforts in recycling and waste reduction practices. Please visit [www.sharppusa.com/environment](http://www.sharppusa.com/environment) to learn more about our environmental leadership.

### Toner Recycling Program

As part of our commitment to preserving the environment, Sharp has partnered with a zero waste to landfill recycler for recycling all Sharp consumables including cartridges, bottles, waste collection containers and drum units. Customers can participate in Sharp's free Stop, Drop, Recycle Program by visiting our website: [www.sharppusa.com/recycle](http://www.sharppusa.com/recycle).





## HEIGHTENED SECURITY ENSURES CONFIDENTIALITY

Sharp's industry-leading document and device protection ensures confidentiality and safeguards your assets.



As MFPs and printers become a part of an organization's integrated document workflows and business processes, security becomes a serious concern. Securely managing business and user data is critical for corporations to be successful but that can add greater complexity as they are associated with various sources and formats.

Sharp helps IT managers minimize such concerns and optimize security management by providing integrated security features.



### **Data and Information Security**

Standard MFP security coupled with the optional Data Security Kit (DSK) protects and controls the major MFP systems and subsystems (print, copy, scan, fax jobs, network settings, memory components, local user interface). The Sharp data encryption method uses the Advanced Encryption Standard (AES) algorithm 256\* bit on all data before it is written to RAM and the hard disk drive. It also provides overwriting routines for deleted data to ensure that all information is virtually irretrievable by unauthorized users.

### **MEETING SECURITY STANDARDS AND CERTIFICATIONS**



#### **Security for Private Sector and Corporate Organizations**

Sharp MFPs provide robust, complete control over information access, transmission and tracking to facilitate compliance with stringent mandates. By implementing the Sharp Security Suite, Sharp MFPs can help banks and investment institutions meet the privacy requirements of the Gramm-Leach-Bliley (GLB) Act. Insurance and healthcare providers can maintain Health Insurance Portability and Accountability Act (HIPAA) compliance with confidence. Businesses across all industries will benefit from the strict controls over financial information required under the Sarbanes-Oxley (SOX) Act.



#### **Security for Public Sector and Government Organizations**

Threats to government infrastructure are rapidly growing and the number of attacks continue to rise. On one hand, information sharing is critical for the efficiency of these organizations. On the other hand, security management is becoming more challenging for IT managers. Sharp can help your organization meet US government information security requirements through ISO 15408/Common Criteria certifications or features such as Common Access Card (CAC)/ Personal Identity Verification (PIV) authentication to maintain security clearance to protect classified data.



#### **Protect Your Data**

*As the leader in office equipment security, Sharp makes it easy for any business or government entity to safely deploy and facilitate secure printed documents.*



\* Encryption level is varies per model.